




Product datasheet

Anti-Cannabinoid Receptor I antibody ab23703

★★★★★ [22 Abreviews](#) [102 References](#) [2 Images](#)

Overview

Product name	Anti-Cannabinoid Receptor I antibody
Description	Rabbit polyclonal to Cannabinoid Receptor I
Host species	Rabbit
Tested applications	Suitable for: IHC-P, ICC/IF, IHC-Fr
Species reactivity	Reacts with: Mouse, Rat, Dog, Human Predicted to work with: Cow, Chimpanzee, Macaque monkey 
Immunogen	Synthetic peptide: MSVSTD TSAE AL , corresponding to C terminal amino acids 461-472 of Human Cannabinoid Receptor I (Peptide available as ab50542 .) <div>  Run BLAST with  Run BLAST with </div>
General notes	<p>The Life Science industry has been in the grips of a reproducibility crisis for a number of years. Abcam is leading the way in addressing this with our range of recombinant monoclonal antibodies and knockout edited cell lines for gold-standard validation. Please check that this product meets your needs before purchasing.</p> <p>If you have any questions, special requirements or concerns, please send us an inquiry and/or contact our Support team ahead of purchase. Recommended alternatives for this product can be found below, along with publications, customer reviews and Q&As</p>

Properties

Form	Liquid
Storage instructions	Shipped at 4°C. Upon delivery aliquot and store at -20°C. Avoid freeze / thaw cycles.
Storage buffer	pH: 7.40 Preservative: 0.02% Sodium azide Constituents: Tris buffered saline, 50% Glycerol, 0.05% BSA
Purity	Protein A purified
Clonality	Polyclonal
Isotype	IgG

Applications

The Abpromise guarantee

Our **Abpromise guarantee** covers the use of ab23703 in the following tested applications.

The application notes include recommended starting dilutions; optimal dilutions/concentrations should be determined by the end user.

Application	Abreviews	Notes
IHC-P	★★★★★ (7)	Use at an assay dependent concentration.
ICC/IF	★★★★★ (4)	Use at an assay dependent concentration.
IHC-Fr	★★★★★ (2)	Use at an assay dependent concentration. Detection with an ABC system is recommended.

Target

Function

Involved in cannabinoid-induced CNS effects. Acts by inhibiting adenylate cyclase. Could be a receptor for anandamide. Inhibits L-type Ca^{2+} channel current. Isoform 2 and isoform 3 have altered ligand binding.

Tissue specificity

Widely expressed.

Sequence similarities

Belongs to the G-protein coupled receptor 1 family.

Cellular localization

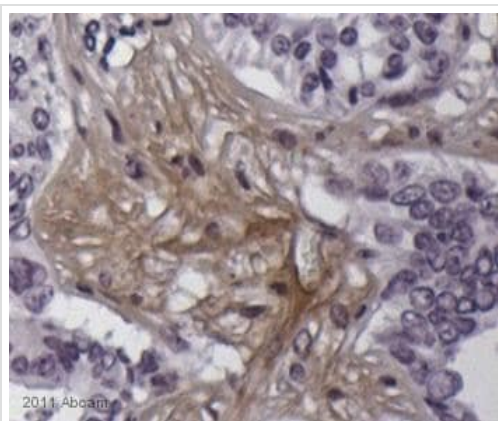
Cell membrane.

Images



Immunoperoxidase staining of CA region of rat hippocampus with the Cannabinoid Receptor I antibody (ab23703, 4ug/ml). the majority of the protein is localized in the pre-synaptic axons, shown as brown particulae. A few neurons also show cytoplasm staining.

Immunohistochemistry (Formalin/PFA-fixed paraffin-embedded sections) - Anti-Cannabinoid Receptor I antibody (ab23703)



Immunohistochemistry (Formalin/PFA-fixed paraffin-embedded sections) - Anti-Cannabinoid Receptor I antibody (ab23703)

Courtesy of an anonymous Abreview

ab23703 staining Cannabinoid Receptor I in human pancreas tissue sections by Immunohistochemistry (IHC-P - paraformaldehyde-fixed, paraffin-embedded sections). Tissue was fixed with paraformaldehyde and blocked with 5% serum for 1 hour at room temperature; antigen retrieval was by heat mediation in a citrate buffer. Samples were incubated with primary antibody (1/50 in PBS) for 8 hours at 4°C. A Biotin-conjugated Goat anti-rabbit IgG polyclonal (1/1000) was used as the secondary antibody.

Please note: All products are "FOR RESEARCH USE ONLY. NOT FOR USE IN DIAGNOSTIC PROCEDURES"

Our Abpromise to you: Quality guaranteed and expert technical support

- Replacement or refund for products not performing as stated on the datasheet
- Valid for 12 months from date of delivery
- Response to your inquiry within 24 hours
- We provide support in Chinese, English, French, German, Japanese and Spanish
- Extensive multi-media technical resources to help you
- We investigate all quality concerns to ensure our products perform to the highest standards

If the product does not perform as described on this datasheet, we will offer a refund or replacement. For full details of the Abpromise, please visit <https://www.abcam.com/abpromise> or contact our technical team.

Terms and conditions

- Guarantee only valid for products bought direct from Abcam or one of our authorized distributors