

Product datasheet

Anti-CAPS1 antibody ab69795

1 Image

Overview

Product name	Anti-CAPS1 antibody
Description	Rabbit polyclonal to CAPS1
Host species	Rabbit
Specificity	specific to CAPS1 and does not recognize CAPS2.
Tested applications	Suitable for: WB
Species reactivity	Reacts with: Rat
Immunogen	Synthetic peptide corresponding to Human CAPS1 (C terminal). 20 amino acid peptide near the carboxy terminus of the human CAPS1. Database link: Q9ULU8
Positive control	WB: Rat brain cytoplasmic lysate.
General notes	<p>The Life Science industry has been in the grips of a reproducibility crisis for a number of years. Abcam is leading the way in addressing this with our range of recombinant monoclonal antibodies and knockout edited cell lines for gold-standard validation. Please check that this product meets your needs before purchasing.</p> <p>If you have any questions, special requirements or concerns, please send us an inquiry and/or contact our Support team ahead of purchase. Recommended alternatives for this product can be found below, along with publications, customer reviews and Q&As</p>

Properties

Form	Liquid
Storage instructions	Shipped at 4°C. Store at +4°C.
Storage buffer	pH: 7.2 Preservative: 0.02% Sodium azide Constituent: PBS
Purity	Immunogen affinity purified
Clonality	Polyclonal
Isotype	IgG

Applications

The Abpromise guarantee

Our **Abpromise guarantee** covers the use of ab69795 in the following tested applications.

The application notes include recommended starting dilutions; optimal dilutions/concentrations should be determined by the end user.

Application	Abreviews	Notes
WB		Use a concentration of 0.5 - 1 µg/ml. Detects a band of approximately 146 kDa (predicted molecular weight: 146 kDa).

Target

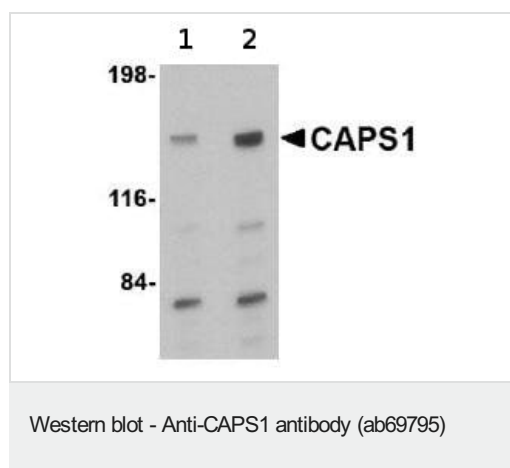
Relevance

CAPS1 (Ca²⁺-dependent activator protein for secretion) belongs to the CAPS/Cadps family which consists of two members, CAPS1 and CAPS2. The CAPS family proteins are involved in the secretion of different secretory substances in developing and postnatal brains. In addition CAPS1 regulates catecholamine release from neuroendocrine cells and is expressed predominantly in the brain.

Cellular localization

Cytoplasmic

Images



Lane 1 : Anti-CAPS1 antibody (ab69795) at 0.5 µg/ml

Lane 2 : Anti-CAPS1 antibody (ab69795) at 1 µg/ml

All lanes : Rat brain tissue lysate

Lysates/proteins at 15 µg per lane.

Predicted band size: 146 kDa

Observed band size: 146 kDa

Additional bands at: 110 kDa, 80 kDa. We are unsure as to the identity of these extra bands.

Please note: All products are "FOR RESEARCH USE ONLY. NOT FOR USE IN DIAGNOSTIC PROCEDURES"

Our Abpromise to you: Quality guaranteed and expert technical support

- Replacement or refund for products not performing as stated on the datasheet
- Valid for 12 months from date of delivery
- Response to your inquiry within 24 hours
- We provide support in Chinese, English, French, German, Japanese and Spanish
- Extensive multi-media technical resources to help you
- We investigate all quality concerns to ensure our products perform to the highest standards

If the product does not perform as described on this datasheet, we will offer a refund or replacement. For full details of the Abpromise, please visit <https://www.abcam.com/abpromise> or contact our technical team.

Terms and conditions

- Guarantee only valid for products bought direct from Abcam or one of our authorized distributors