


Product datasheet

Anti-CAPZA2 antibody ab101451

[3 Images](#)

Overview

Product name	Anti-CAPZA2 antibody
Description	Rabbit polyclonal to CAPZA2
Host species	Rabbit
Tested applications	Suitable for: WB
Species reactivity	Reacts with: Mouse, Human, Zebrafish Predicted to work with: Rat, Cow, Dog, Monkey 
Immunogen	Recombinant fragment, corresponding to a region within amino acids 134-268 of Human CAPZA2 (AAH05338).
Positive control	A549, HeLa, HepG2, HCT116, Adult zebrafish and NIH-3T3 whole cell lysate
General notes	<p>The Life Science industry has been in the grips of a reproducibility crisis for a number of years. Abcam is leading the way in addressing this with our range of recombinant monoclonal antibodies and knockout edited cell lines for gold-standard validation. Please check that this product meets your needs before purchasing.</p> <p>If you have any questions, special requirements or concerns, please send us an inquiry and/or contact our Support team ahead of purchase. Recommended alternatives for this product can be found below, along with publications, customer reviews and Q&As</p>

Properties

Form	Liquid
Storage instructions	Shipped at 4°C. Upon delivery aliquot and store at -20°C or -80°C. Avoid repeated freeze / thaw cycles.
Storage buffer	pH: 7.00 Preservative: 0.01% Thimerosal (merthiolate) Constituents: 1.21% Tris, 0.75% Glycine, 20% Glycerol (glycerin, glycerine)
Purity	Immunogen affinity purified
Clonality	Polyclonal
Isotype	IgG

Applications

The Abpromise guarantee

Our **Abpromise guarantee** covers the use of ab101451 in the following tested applications.

The application notes include recommended starting dilutions; optimal dilutions/concentrations should be determined by the end user.

Application	Abreviews	Notes
WB		1/500 - 1/3000. Predicted molecular weight: 33 kDa.

Target

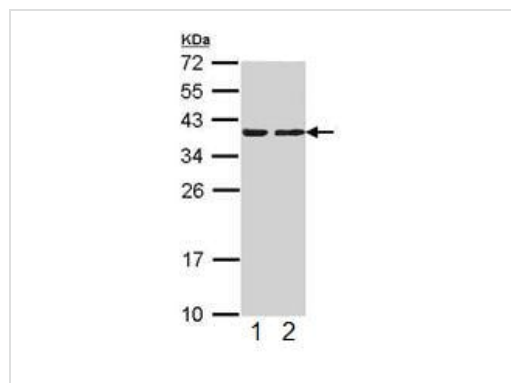
Function

F-actin-capping proteins bind in a Ca²⁺-independent manner to the fast growing ends of actin filaments (barbed end) thereby blocking the exchange of subunits at these ends. Unlike other capping proteins (such as gelsolin and severin), these proteins do not sever actin filaments.

Sequence similarities

Belongs to the F-actin-capping protein alpha subunit family.

Images



Western blot - Anti-CAPZA2 antibody (ab101451)

All lanes : Anti-CAPZA2 antibody (ab101451) at 1/1000 dilution

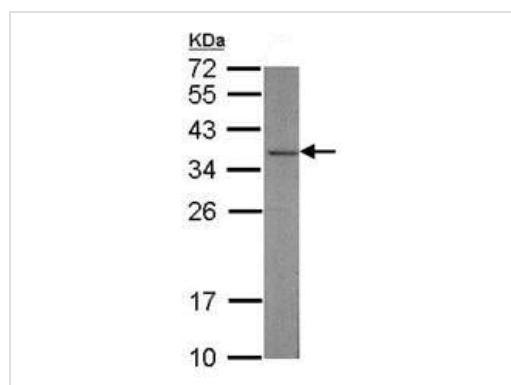
Lane 1 : HepG2 whole cell lysate

Lane 2 : HCT116 whole cell lysate

Lysates/proteins at 30 µg per lane.

Predicted band size: 33 kDa

12% SDS PAGE

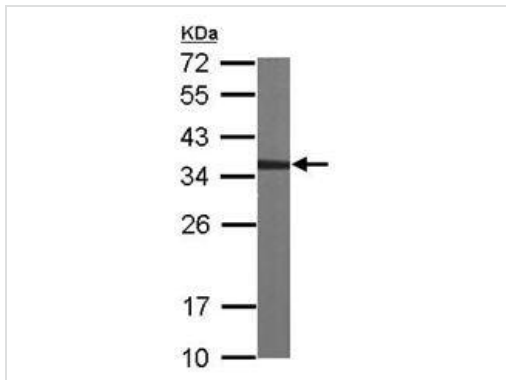


Western blot - Anti-CAPZA2 antibody (ab101451)

Anti-CAPZA2 antibody (ab101451) at 1/1000 dilution + Adult zebrafish whole cell lysate at 10 µg

Predicted band size: 33 kDa

12% SDS PAGE



Western blot - Anti-CAPZA2 antibody (ab101451)

Anti-CAPZA2 antibody (ab101451) at 1/1000 dilution + NIH-3T3 whole cell lysate at 30 µg

Predicted band size: 33 kDa

12% SDS PAGE

Please note: All products are "FOR RESEARCH USE ONLY. NOT FOR USE IN DIAGNOSTIC PROCEDURES"

Our Abpromise to you: Quality guaranteed and expert technical support

- Replacement or refund for products not performing as stated on the datasheet
- Valid for 12 months from date of delivery
- Response to your inquiry within 24 hours
- We provide support in Chinese, English, French, German, Japanese and Spanish
- Extensive multi-media technical resources to help you
- We investigate all quality concerns to ensure our products perform to the highest standards

If the product does not perform as described on this datasheet, we will offer a refund or replacement. For full details of the Abpromise, please visit <https://www.abcam.com/abpromise> or contact our technical team.

Terms and conditions

- Guarantee only valid for products bought direct from Abcam or one of our authorized distributors