

## Product datasheet

# Anti-Carbonic Anhydrase 3/CA3 antibody [EPR13425] ab181358

Recombinant RabMAb

★★★★★ [1 Abreviews](#) [1 References](#) [3 Images](#)

### Overview

<b>Product name</b>	Anti-Carbonic Anhydrase 3/CA3 antibody [EPR13425]
<b>Description</b>	Rabbit monoclonal [EPR13425] to Carbonic Anhydrase 3/CA3
<b>Host species</b>	Rabbit
<b>Tested applications</b>	<b>Suitable for:</b> WB, IHC-P <b>Unsuitable for:</b> ICC/IF or IP
<b>Species reactivity</b>	<b>Reacts with:</b> Mouse, Rat, Human
<b>Immunogen</b>	Synthetic peptide within Human Carbonic Anhydrase 3/CA3 aa 50-150 (Cysteine residue). The exact sequence is proprietary. Database link: <a href="#">P07451</a>
<b>Positive control</b>	Human skeletal muscle, rat muscle, and mouse muscle lysates, Human skeletal muscle tissue
<b>General notes</b>	This product is a recombinant monoclonal antibody, which offers several advantages including: <ul style="list-style-type: none"> <li>- High batch-to-batch consistency and reproducibility</li> <li>- Improved sensitivity and specificity</li> <li>- Long-term security of supply</li> <li>- Animal-free production</li> </ul> For more information <a href="#">see here</a> . Our RabMAb <sup>®</sup> technology is a patented hybridoma-based technology for making rabbit monoclonal antibodies. For details on our patents, please refer to <a href="#">RabMAb<sup>®</sup> patents</a> .

### Properties

<b>Form</b>	Liquid
<b>Storage instructions</b>	Shipped at 4°C. Store at +4°C short term (1-2 weeks). Upon delivery aliquot. Store at -20°C long term. Avoid freeze / thaw cycle.
<b>Storage buffer</b>	pH: 7.20 Preservative: 0.01% Sodium azide Constituents: 9% PBS, 40% Glycerol (glycerin, glycerine), 0.05% BSA, 50% Tissue culture supernatant
<b>Purity</b>	Protein A purified

<b>Clonality</b>	Monoclonal
<b>Clone number</b>	EPR13425
<b>Isotype</b>	IgG

## Applications

**The Abpromise guarantee** Our **Abpromise guarantee** covers the use of ab181358 in the following tested applications. The application notes include recommended starting dilutions; optimal dilutions/concentrations should be determined by the end user.

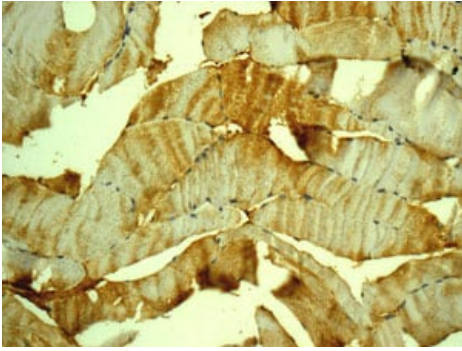
Application	Abreviews	Notes
<b>WB</b>	★★★★★ (1)	1/1000 - 1/5000. Predicted molecular weight: 29 kDa.
<b>IHC-P</b>		1/50 - 1/100. Perform heat mediated antigen retrieval with citrate buffer pH 6 before commencing with IHC staining protocol.

**Application notes** Is unsuitable for ICC/IF or IP.

## Target

<b>Function</b>	Reversible hydration of carbon dioxide.
<b>Tissue specificity</b>	Muscle specific.
<b>Sequence similarities</b>	Belongs to the alpha-carbonic anhydrase family.
<b>Developmental stage</b>	At 6 weeks gestation, transcripts accumulate at low levels in the somites and at high levels throughout the notochord. As gestation continues, CA3 becomes abundant in all developing muscle masses and continues at high to moderate levels in the notochord.
<b>Post-translational modifications</b>	S-glutathionylated in hepatocytes under oxidative stress.
<b>Cellular localization</b>	Cytoplasm.

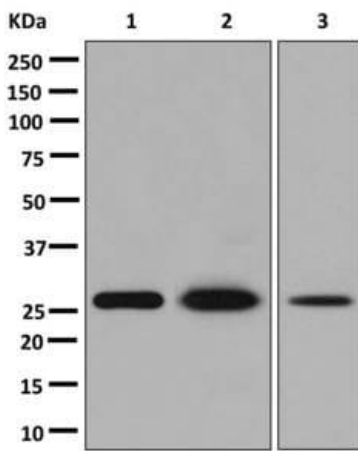
## Images



Immunohistochemistry (Formalin/PFA-fixed paraffin-embedded sections) - Anti-Carbonic Anhydrase 3/CA3 antibody [EPR13425] (ab181358)

Immunohistochemical analysis of paraffin-embedded Human skeletal muscle tissue labeling Carbonic Anhydrase 3/CA3 with ab181358 at 1/50 dilution.

Perform heat mediated antigen retrieval with citrate buffer pH 6 before commencing with IHC staining protocol.



Western blot - Anti-Carbonic Anhydrase 3/CA3 antibody [EPR13425] (ab181358)

**All lanes :** Anti-Carbonic Anhydrase 3/CA3 antibody [EPR13425] (ab181358) at 1/1000 dilution

**Lane 1 :** Human skeletal muscle lysates

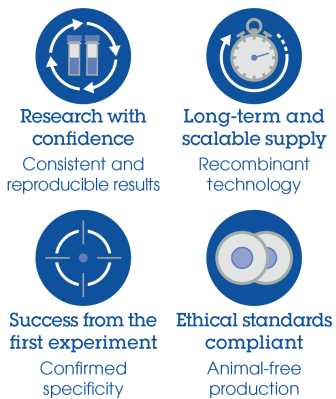
**Lane 2 :** Rat muscle lysates

**Lane 3 :** Mouse muscle lysates

Lysates/proteins at 10 µg per lane.

**Predicted band size:** 29 kDa

### Why choose a recombinant antibody?



Anti-Carbonic Anhydrase 3/CA3 antibody [EPR13425] (ab181358)

**Please note:** All products are "FOR RESEARCH USE ONLY. NOT FOR USE IN DIAGNOSTIC PROCEDURES"

### **Our Abpromise to you: Quality guaranteed and expert technical support**

---

- Replacement or refund for products not performing as stated on the datasheet
- Valid for 12 months from date of delivery
- Response to your inquiry within 24 hours
  
- We provide support in Chinese, English, French, German, Japanese and Spanish
- Extensive multi-media technical resources to help you
- We investigate all quality concerns to ensure our products perform to the highest standards

If the product does not perform as described on this datasheet, we will offer a refund or replacement. For full details of the Abpromise, please visit <https://www.abcam.com/abpromise> or contact our technical team.

### **Terms and conditions**

---

- Guarantee only valid for products bought direct from Abcam or one of our authorized distributors