

## Product datasheet

# Anti-Carboxylesterase 1C antibody ab193485

[1 References](#) [2 Images](#)

### Overview

<b>Product name</b>	Anti-Carboxylesterase 1C antibody
<b>Description</b>	Rabbit polyclonal to Carboxylesterase 1C
<b>Host species</b>	Rabbit
<b>Tested applications</b>	<b>Suitable for:</b> WB
<b>Species reactivity</b>	<b>Reacts with:</b> Mouse, Rat
<b>Immunogen</b>	Recombinant fragment corresponding to Mouse Carboxylesterase 1C aa 1-550. Database link: <a href="#">P23953</a>

 [Run BLAST with](#)

 [Run BLAST with](#)

### General notes

The Life Science industry has been in the grips of a reproducibility crisis for a number of years. Abcam is leading the way in addressing this with our range of recombinant monoclonal antibodies and knockout edited cell lines for gold-standard validation. Please check that this product meets your needs before purchasing.

If you have any questions, special requirements or concerns, please send us an inquiry and/or contact our Support team ahead of purchase. Recommended alternatives for this product can be found below, along with publications, customer reviews and Q&As

### Properties

<b>Form</b>	Liquid
<b>Storage instructions</b>	Shipped at 4°C. Store at +4°C short term (1-2 weeks). Upon delivery aliquot. Store at -20°C long term. Avoid freeze / thaw cycle.
<b>Storage buffer</b>	pH: 7.40 Constituents: 49% PBS, 50% Glycerol (glycerin, glycerine), 0.03% Proclin 300
<b>Purity</b>	Protein G purified
<b>Purification notes</b>	>95%
<b>Clonality</b>	Polyclonal
<b>Isotype</b>	IgG

### Applications

## The Abpromise guarantee

Our **Abpromise guarantee** covers the use of ab193485 in the following tested applications.

The application notes include recommended starting dilutions; optimal dilutions/concentrations should be determined by the end user.

Application	Abreviews	Notes
WB		1/1000 - 1/5000. Detects a band of approximately 61 kDa (predicted molecular weight: 61 kDa).

## Target

### Function

Involved in the detoxification of xenobiotics and in the activation of ester and amide prodrugs.  
Involved in the extracellular metabolism of lung surfactant.

### Tissue specificity

Expressed in lung, kidney and liver.

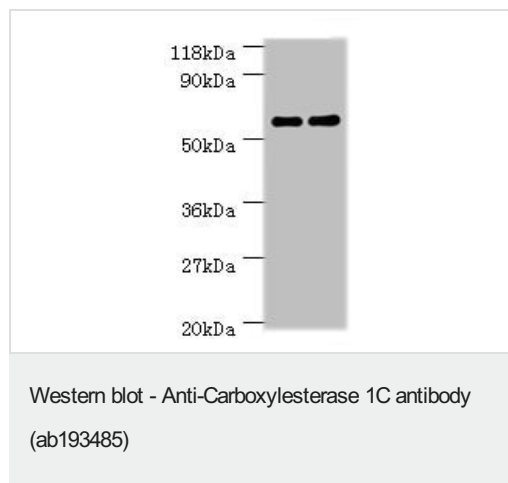
### Sequence similarities

Belongs to the type-B carboxylesterase/lipase family.

### Cellular localization

Endoplasmic reticulum lumen. Microsomal membrane, lumen of endoplasmic reticulum.

## Images



**All lanes :** Anti-Carboxylesterase 1C antibody (ab193485) at 2 µg

**Lane 1 :** Mouse liver tissue lysate

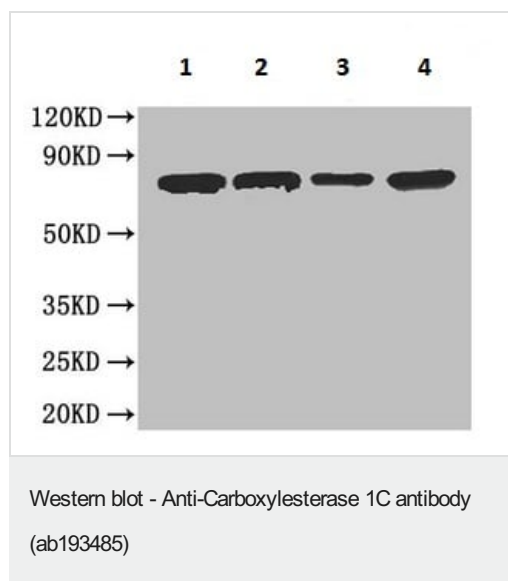
**Lane 2 :** Rat liver tissue lysate

### Secondary

**All lanes :** Goat polyclonal to Rabbit IgG at 1/10000 dilution

**Predicted band size:** 61 kDa

**Observed band size:** 61 kDa



**All lanes :** Anti-Carboxylesterase 1C antibody (ab193485) at 4 µg/ml

**Lane 1 :** Mouse lung tissue lysate

**Lane 2 :** Mouse kidney tissue lysate

**Lane 3 :** Mouse skeletal muscle tissue lysate

**Lane 4 :** Mouse thymus tissue lysate

### Secondary

**All lanes :** Goat polyclonal to rabbit IgG at 1/50000 dilution

**Predicted band size:** 61 kDa

**Observed band size:** 61 kDa

**Please note:** All products are "FOR RESEARCH USE ONLY. NOT FOR USE IN DIAGNOSTIC PROCEDURES"

### **Our Abpromise to you: Quality guaranteed and expert technical support**

---

- Replacement or refund for products not performing as stated on the datasheet
- Valid for 12 months from date of delivery
- Response to your inquiry within 24 hours
  
- We provide support in Chinese, English, French, German, Japanese and Spanish
- Extensive multi-media technical resources to help you
- We investigate all quality concerns to ensure our products perform to the highest standards

If the product does not perform as described on this datasheet, we will offer a refund or replacement. For full details of the Abpromise, please visit <https://www.abcam.com/abpromise> or contact our technical team.

### **Terms and conditions**

---

- Guarantee only valid for products bought direct from Abcam or one of our authorized distributors