

Anti-Carboxypeptidase Y antibody ab181691

1 Image

Overview

Product name	Anti-Carboxypeptidase Y antibody
Description	Rabbit polyclonal to Carboxypeptidase Y
Host species	Rabbit
Tested applications	Suitable for: WB
Species reactivity	Reacts with: <i>Saccharomyces cerevisiae</i>
Immunogen	Full length native protein (purified) corresponding to <i>Saccharomyces cerevisiae</i> Carboxypeptidase Y aa 112-532.

Sequence:

KIKDPKILGIDPNVTQYTGYLDVEDEDKHFFFWTFESRNDP
AKDPVILWL
NGGPGCSSLTGLFFELGPSSIGPDLKPIGNPYSWNSNATVI
FLDQPVNVG
FSYSGSSGVSNTVAAGKDVYNFLELFFDQFPEYVNLKGQD
FHIAGESYAGH
YIPVFASEILSHKDRNFNLTSVLIGNGLTDPLTQYNYEPMA
CGEGGEPS
VLPSEECSAMEDSLERCLGLIESCYDSQSVWSCVPATYIC
NNAQLAPYQR
TGRNVYDIRKDCEGGNLCYPTLQDIDDYLNQDYVKEAVGA
EVDHYESCNE
DINRNFLFAGDWMKPYHTAVTDLLNQDLPILVYAGDKDFIC
NWLGNKAWT
DVLPWKYDEEFASQKVRNWTASITDEVAGEVKSYKHFTY
LRVFNGGHMVP FVDPENALSMVNEWHGGFS L

Database link: [P00729](#)

 [Run BLAST with](#)

 [Run BLAST with](#)

Positive control

S. cerevisiae Carboxypeptidase Y protein.

General notes

The Life Science industry has been in the grips of a reproducibility crisis for a number of years. Abcam is leading the way in addressing this with our range of recombinant monoclonal antibodies and knockout edited cell lines for gold-standard validation. Please check that this product meets your needs before purchasing.

If you have any questions, special requirements or concerns, please send us an inquiry and/or contact our Support team ahead of purchase. Recommended alternatives for this product can be

found below, along with publications, customer reviews and Q&As

Properties

Form	Liquid
Storage instructions	Shipped at 4°C. Store at +4°C short term (1-2 weeks). Upon delivery aliquot. Store at -20°C long term. Avoid freeze / thaw cycle.
Storage buffer	pH: 6.50 Preservative: 0.01% Sodium azide Constituents: 0.27% Tripotassium orthophosphate, 0.88% Sodium chloride No stabilizer.
Purity	IgG fraction
Purification notes	ab181691 is an IgG fraction antibody purified from monospecific antiserum by a multi-step process which includes delipidation, salt fractionation and ion exchange chromatography followed by extensive dialysis against the buffer stated above. Assay by immunoelectrophoresis resulted in a single precipitin arc against anti-Rabbit Serum as well as purified and partially purified <i>S. cerevisiae</i> Carboxypeptidase Y.
Clonality	Polyclonal
Isotype	IgG

Applications

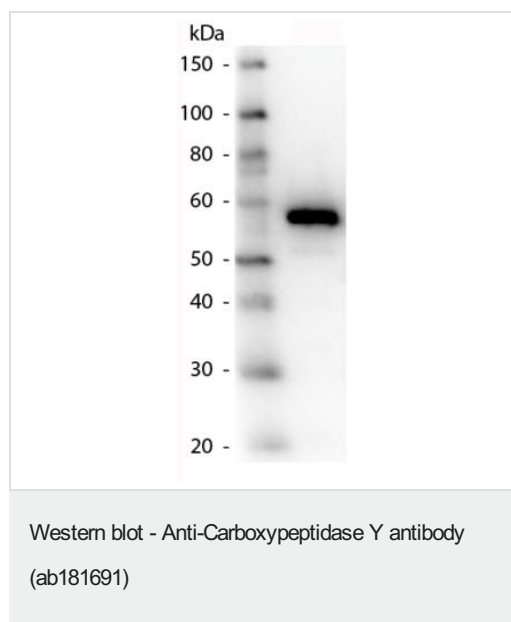
The Abpromise guarantee Our **Abpromise guarantee** covers the use of ab181691 in the following tested applications. The application notes include recommended starting dilutions; optimal dilutions/concentrations should be determined by the end user.

Application	Abreviews	Notes
WB		1/1000 - 1/5000. Detects a band of approximately 57 kDa (predicted molecular weight: 60 kDa).

Target

Function	Involved in degradation of small peptides. Digests preferentially peptides containing an aliphatic or hydrophobic residue in P1' position, as well as methionine, leucine or phenylalanine in P1 position of ester substrate.
Sequence similarities	Belongs to the peptidase S10 family.
Post-translational modifications	Enters the endoplasmic reticulum as an inactive zymogen and is modified by four N-linked core oligosaccharides, giving rise to a precursor known as P1 (67 kDa). As P1 transits through the Golgi, extension of its core oligosaccharides leads to the Golgi-modified P2 precursor (69 kDa). P2 is sorted away from secretory proteins at or beyond a late Golgi compartment and is subsequently delivered to the vacuole via a prevacuolar endosome-like compartment. Upon arrival in the vacuole, the N-terminal prosegment of P2 is cleaved to yield the enzymatically active mature vacuolar form of CPY (61 kDa).
Cellular localization	Vacuole. Lysosome-like vacuoles.

Images



Anti-Carboxypeptidase Y antibody (ab181691) at 1/1000 dilution +
S. cerevisiae Carboxypeptidase Y at 0.05 µg

Secondary

Peroxidase rabbit at 1/40000 dilution

Developed using the ECL technique.

Predicted band size: 60 kDa

Observed band size: 57 kDa

Please note: All products are "FOR RESEARCH USE ONLY. NOT FOR USE IN DIAGNOSTIC PROCEDURES"

Our Abpromise to you: Quality guaranteed and expert technical support

- Replacement or refund for products not performing as stated on the datasheet
- Valid for 12 months from date of delivery
- Response to your inquiry within 24 hours
- We provide support in Chinese, English, French, German, Japanese and Spanish
- Extensive multi-media technical resources to help you
- We investigate all quality concerns to ensure our products perform to the highest standards

If the product does not perform as described on this datasheet, we will offer a refund or replacement. For full details of the Abpromise, please visit <https://www.abcam.com/abpromise> or contact our technical team.

Terms and conditions

- Guarantee only valid for products bought direct from Abcam or one of our authorized distributors