

Product datasheet

Anti-Carcino Embryonic Antigen CEA antibody [CEA31] ab193372

★★★★★ [1 Abreviews](#) [1 Image](#)

Overview

Product name	Anti-Carcino Embryonic Antigen CEA antibody [CEA31]
Description	Mouse monoclonal [CEA31] to Carcino Embryonic Antigen CEA
Host species	Mouse
Tested applications	Suitable for: IHC-P
Species reactivity	Reacts with: Human
Immunogen	Tissue, cells or virus corresponding to Human Carcino Embryonic Antigen CEA. Human colon carcinoma extract.
Positive control	MCF7 or 293T cells. Colon carcinoma; Human colon tissue.
General notes	<p>The Life Science industry has been in the grips of a reproducibility crisis for a number of years. Abcam is leading the way in addressing this with our range of recombinant monoclonal antibodies and knockout edited cell lines for gold-standard validation. Please check that this product meets your needs before purchasing.</p> <p>If you have any questions, special requirements or concerns, please send us an inquiry and/or contact our Support team ahead of purchase. Recommended alternatives for this product can be found below, along with publications, customer reviews and Q&As</p>

Properties

Form	Liquid
Storage instructions	Shipped at 4°C. Store at +4°C short term (1-2 weeks). Upon delivery aliquot. Store at -20°C long term. Avoid freeze / thaw cycle.
Storage buffer	<p>pH: 7.2</p> <p>Preservative: 0.05% Sodium azide</p> <p>Constituents: 99% PBS, 0.05% BSA</p>
Purification notes	ab193372 was purified from Bioreactor Concentrate by Protein A/G.
Clonality	Monoclonal
Clone number	CEA31
Isotype	IgG1
Light chain type	kappa

Applications

The Abpromise guarantee

Our **Abpromise guarantee** covers the use of ab193372 in the following tested applications.

The application notes include recommended starting dilutions; optimal dilutions/concentrations should be determined by the end user.

Application	Abreviews	Notes
IHC-P		Use a concentration of 1 - 2 µg/ml. Perform heat mediated antigen retrieval with Tris/EDTA buffer pH 9.0 before commencing with IHC staining protocol.

Target

Function

Cell surface glycoprotein that plays a role in cell adhesion and in intracellular signaling. Receptor for E.coli Dr adhesins.

Tissue specificity

Found in adenocarcinomas of endodermally derived digestive system epithelium and fetal colon.

Sequence similarities

Belongs to the immunoglobulin superfamily. CEA family.
Contains 7 Ig-like (immunoglobulin-like) domains.

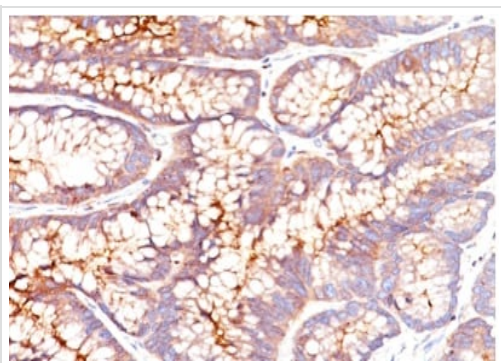
Post-translational modifications

Complex immunoreactive glycoprotein with a MW of 180 kDa comprising 60% carbohydrate.

Cellular localization

Cell membrane.

Images



Immunohistochemical analysis of formalin-fixed, paraffin-embedded Human colon tissue labeling Carcino Embryonic Antigen CEA with ab193372 at 2 µg/ml.

Immunohistochemistry (Formalin/PFA-fixed paraffin-embedded sections) - Anti-Carcino Embryonic Antigen CEA antibody [CEA31] (ab193372)

Please note: All products are "FOR RESEARCH USE ONLY. NOT FOR USE IN DIAGNOSTIC PROCEDURES"

Our Abpromise to you: Quality guaranteed and expert technical support

- Replacement or refund for products not performing as stated on the datasheet
- Valid for 12 months from date of delivery
- Response to your inquiry within 24 hours
- We provide support in Chinese, English, French, German, Japanese and Spanish
- Extensive multi-media technical resources to help you
- We investigate all quality concerns to ensure our products perform to the highest standards

If the product does not perform as described on this datasheet, we will offer a refund or replacement. For full details of the Abpromise, please visit <https://www.abcam.com/abpromise> or contact our technical team.

Terms and conditions

- Guarantee only valid for products bought direct from Abcam or one of our authorized distributors