





## Product datasheet

### Anti-Carma 1/CARD11 antibody ab115471

2 Images

#### Overview

<b>Product name</b>	Anti-Carma 1/CARD11 antibody
<b>Description</b>	Goat polyclonal to Carma 1/CARD11
<b>Host species</b>	Goat
<b>Tested applications</b>	<b>Suitable for:</b> WB, IHC-P
<b>Species reactivity</b>	<b>Reacts with:</b> Human <b>Predicted to work with:</b> Mouse, Rat 
<b>Immunogen</b>	Synthetic peptide corresponding to Human Carma 1/CARD11 aa 1100-1200 (C terminal) (Cysteine residue).  <b>Run BLAST with</b>  <b>Run BLAST with</b> 
<b>Positive control</b>	Human spleen tissue; Jurkat cell lysate. The pattern of staining with this antibody is similar to that observed with <a href="#">ab189167</a> and <a href="#">ab113409</a> in that the reagent stains macrophages, mast cells, subsets of lymphocytes and plasma cells in various organs across the body. It also stains adrenal cortex, heart, kidney, small intestine epithelium, skeletal muscle, and pancreatic exocrine epithelium and Kupffer cells in the liver
<b>General notes</b>	<p>The Life Science industry has been in the grips of a reproducibility crisis for a number of years. Abcam is leading the way in addressing this with our range of recombinant monoclonal antibodies and knockout edited cell lines for gold-standard validation. Please check that this product meets your needs before purchasing.</p> <p>If you have any questions, special requirements or concerns, please send us an inquiry and/or contact our Support team ahead of purchase. Recommended alternatives for this product can be found below, along with publications, customer reviews and Q&amp;As</p>

#### Properties

<b>Form</b>	Liquid
<b>Storage instructions</b>	Shipped at 4°C. Store at +4°C short term (1-2 weeks). Upon delivery aliquot. Store at -20°C long term.
<b>Storage buffer</b>	pH: 7.30 Preservative: 0.02% Sodium azide Constituents: 0.5% BSA, 99% Tris buffered saline
<b>Purity</b>	Protein G purified

<b>Clonality</b>	Polyclonal
<b>Isotype</b>	IgG

## Applications

**The Abpromise guarantee** Our **Abpromise guarantee** covers the use of ab115471 in the following tested applications. The application notes include recommended starting dilutions; optimal dilutions/concentrations should be determined by the end user.

Application	Abreviews	Notes
<b>WB</b>		Use a concentration of 1 - 3 µg/ml. Predicted molecular weight: 133 kDa.
<b>IHC-P</b>		Use a concentration of 2 µg/ml. Perform heat mediated antigen retrieval with citrate buffer pH 6 before commencing with IHC staining protocol.

## Target

<b>Function</b>	Involved in the costimulatory signal essential for T-cell receptor (TCR)-mediated T-cell activation. Its binding to DPP4 induces T-cell proliferation and NF-kappa-B activation in a T-cell receptor/CD3-dependent manner. Activates NF-kappa-B via BCL10 and IKK. Stimulates the phosphorylation of BCL10.
<b>Tissue specificity</b>	Detected in adult peripheral blood leukocytes, thymus, spleen and liver. Also found in promyelocytic leukemia HL-60 cells, chronic myelogenous leukemia K562 cells, Burkitt's lymphoma Raji cells and colorectal adenocarcinoma SW480 cells. Not detected in HeLa S3, Molt-4, A549 and G431 cells.
<b>Sequence similarities</b>	Contains 1 CARD domain. Contains 1 guanylate kinase-like domain. Contains 1 PDZ (DHR) domain.
<b>Post-translational modifications</b>	Phosphorylation at Ser-559, Ser-644 and Ser-652 by PRKCBB leads to a shift from an inactive to an active form that activates the NF-kappa-B signaling.
<b>Cellular localization</b>	Cytoplasm. Membrane raft. Colocalized with DPP4 in membrane rafts.

## Images



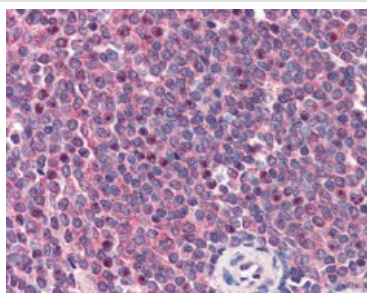
Western blot - Anti-Carma 1/CARD11 antibody (ab115471)

Anti-Carma 1/CARD11 antibody (ab115471) at 1 µg/ml + Jurkat cell lysate (in RIPA buffer) at 35 µg

Developed using the ECL technique.

**Predicted band size:** 133 kDa

Primary incubation: 1 hour



Immunohistochemistry (Formalin/PFA-fixed paraffin-embedded sections) - Anti-Carma 1/CARD11 antibody (ab115471)

ab115471 at 2ug/ml staining Carma/CARD11 in Formalin-fixed, Paraffin-embedded Human spleen tissue by Immunohistochemistry, followed by biotinylated secondary antibody, alkaline phosphatase-streptavidin and chromogen.

**Please note:** All products are "FOR RESEARCH USE ONLY. NOT FOR USE IN DIAGNOSTIC PROCEDURES"

### Our Abpromise to you: Quality guaranteed and expert technical support

- Replacement or refund for products not performing as stated on the datasheet
- Valid for 12 months from date of delivery
- Response to your inquiry within 24 hours
- We provide support in Chinese, English, French, German, Japanese and Spanish
- Extensive multi-media technical resources to help you
- We investigate all quality concerns to ensure our products perform to the highest standards

If the product does not perform as described on this datasheet, we will offer a refund or replacement. For full details of the Abpromise, please visit <https://www.abcam.com/abpromise> or contact our technical team.

### Terms and conditions

- Guarantee only valid for products bought direct from Abcam or one of our authorized distributors