


## Product datasheet

### Anti-Carma 1/CARD11 antibody ab91463

[3 References](#) [2 Images](#)

#### Overview

<b>Product name</b>	Anti-Carma 1/CARD11 antibody
<b>Description</b>	Rabbit polyclonal to Carma 1/CARD11
<b>Host species</b>	Rabbit
<b>Tested applications</b>	<b>Suitable for:</b> WB, IP
<b>Species reactivity</b>	<b>Reacts with:</b> Human <b>Predicted to work with:</b> Mouse, Rat, Rabbit, Horse, Cow, Dog, Chimpanzee, Rhesus monkey, Gorilla, Orangutan, Platypus, Elephant 
<b>Immunogen</b>	Synthetic peptide corresponding to Human Carma 1/CARD11 aa 275-325. Database link: <a href="#">NP_115791.3</a>
<b>General notes</b>	<p>The Life Science industry has been in the grips of a reproducibility crisis for a number of years. Abcam is leading the way in addressing this with our range of recombinant monoclonal antibodies and knockout edited cell lines for gold-standard validation. Please check that this product meets your needs before purchasing.</p> <p>If you have any questions, special requirements or concerns, please send us an inquiry and/or contact our Support team ahead of purchase. Recommended alternatives for this product can be found below, along with publications, customer reviews and Q&amp;As</p>

#### Properties

<b>Form</b>	Liquid
<b>Storage instructions</b>	Shipped at 4°C. Upon delivery aliquot and store at -20°C. Avoid freeze / thaw cycles.
<b>Storage buffer</b>	pH: 7 Preservative: 0.09% Sodium azide Constituent: Tris citrate/phosphate
<b>Purity</b>	Immunogen affinity purified
<b>Clonality</b>	Polyclonal
<b>Isotype</b>	IgG

#### Applications

## The Abpromise guarantee

Our **Abpromise guarantee** covers the use of ab91463 in the following tested applications.

The application notes include recommended starting dilutions; optimal dilutions/concentrations should be determined by the end user.

Application	Abreviews	Notes
WB		1/2000 - 1/10000. Predicted molecular weight: 133 kDa.
IP		Use at 2-5 µg/mg of lysate.

## Target

### Function

Involved in the costimulatory signal essential for T-cell receptor (TCR)-mediated T-cell activation. Its binding to DPP4 induces T-cell proliferation and NF-kappa-B activation in a T-cell receptor/CD3-dependent manner. Activates NF-kappa-B via BCL10 and IKK. Stimulates the phosphorylation of BCL10.

### Tissue specificity

Detected in adult peripheral blood leukocytes, thymus, spleen and liver. Also found in promyelocytic leukemia HL-60 cells, chronic myelogenous leukemia K562 cells, Burkitt's lymphoma Raji cells and colorectal adenocarcinoma SW480 cells. Not detected in HeLa S3, Molt-4, A549 and G431 cells.

### Sequence similarities

Contains 1 CARD domain.  
Contains 1 guanylate kinase-like domain.  
Contains 1 PDZ (DHR) domain.

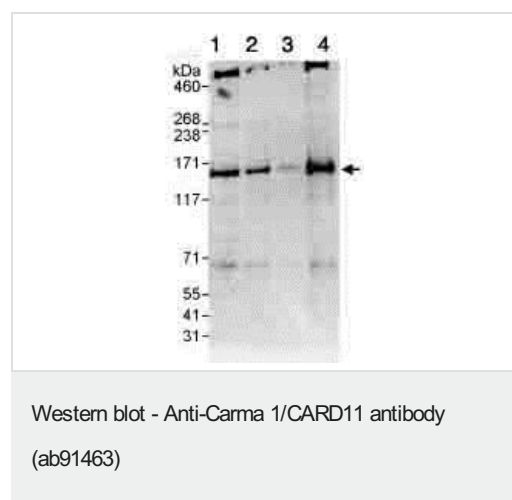
### Post-translational modifications

Phosphorylation at Ser-559, Ser-644 and Ser-652 by PRKCBB leads to a shift from an inactive to an active form that activates the NF-kappa-B signaling.

### Cellular localization

Cytoplasm. Membrane raft. Colocalized with DPP4 in membrane rafts.

## Images



**All lanes :** Anti-Carma 1/CARD11 antibody (ab91463) at 0.1 µg/ml

**Lane 1 :** Ramos whole cell lysate at 50 µg

**Lane 2 :** Ramos whole cell lysate at 15 µg

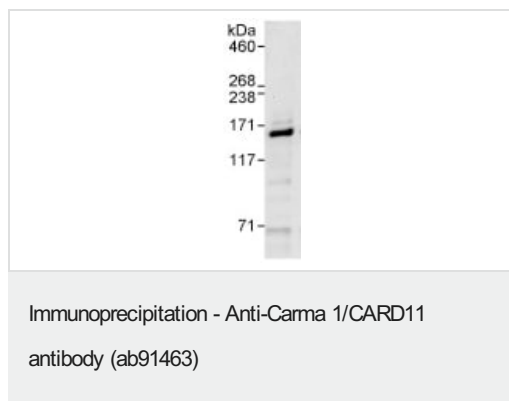
**Lane 3 :** Ramos whole cell lysate at 5 µg

**Lane 4 :** K562 whole cell lysate at 50 µg

Developed using the ECL technique.

**Predicted band size:** 133 kDa

**Exposure time:** 3 minutes



Sample: whole cell lysate from Ramos cells (1 mg for IP, 20% of IP loaded) .

Antibody: ab91463 at 1  $\mu$ g/ml for WB and at 10  $\mu$ g/mg lysate for IP.

Detection: chemiluminescence with exposure times of 10 seconds.

**Please note:** All products are "FOR RESEARCH USE ONLY. NOT FOR USE IN DIAGNOSTIC PROCEDURES"

### Our Abpromise to you: Quality guaranteed and expert technical support

---

- Replacement or refund for products not performing as stated on the datasheet
- Valid for 12 months from date of delivery
- Response to your inquiry within 24 hours
- We provide support in Chinese, English, French, German, Japanese and Spanish
- Extensive multi-media technical resources to help you
- We investigate all quality concerns to ensure our products perform to the highest standards

If the product does not perform as described on this datasheet, we will offer a refund or replacement. For full details of the Abpromise, please visit <https://www.abcam.com/abpromise> or contact our technical team.

### Terms and conditions

---

- Guarantee only valid for products bought direct from Abcam or one of our authorized distributors