


## Product datasheet

### Anti-Carma 1/CARD11 antibody [EPR3177] ab109310

Recombinant **RabMAb**

2 Images

#### Overview

<b>Product name</b>	Anti-Carma 1/CARD11 antibody [EPR3177]
<b>Description</b>	Rabbit monoclonal [EPR3177] to Carma 1/CARD11
<b>Host species</b>	Rabbit
<b>Tested applications</b>	<b>Suitable for:</b> WB <b>Unsuitable for:</b> Flow Cyt, IHC-P or IP
<b>Species reactivity</b>	<b>Reacts with:</b> Human <b>Predicted to work with:</b> Mouse 
<b>Immunogen</b>	Synthetic peptide. This information is proprietary to Abcam and/or its suppliers.
<b>Positive control</b>	K562 and Ramos cell lysates
<b>General notes</b>	<p>This product is a recombinant monoclonal antibody, which offers several advantages including:</p> <ul style="list-style-type: none"> <li>- High batch-to-batch consistency and reproducibility</li> <li>- Improved sensitivity and specificity</li> <li>- Long-term security of supply</li> <li>- Animal-free production</li> </ul> <p>For more information <a href="#">see here</a>.</p> <p>Our RabMAb<sup>®</sup> technology is a patented hybridoma-based technology for making rabbit monoclonal antibodies. For details on our patents, please refer to <a href="#">RabMAb<sup>®</sup> patents</a>.</p> <p>Rat: We have preliminary internal testing data to indicate this antibody may not react with this species. Please contact us for more information.</p>

#### Properties

<b>Form</b>	Liquid
<b>Storage instructions</b>	Shipped at 4°C. Store at -20°C. Stable for 12 months at -20°C.
<b>Storage buffer</b>	pH: 7.20 Preservative: 0.05% Sodium azide Constituents: 0.1% BSA, 40% Glycerol (glycerin, glycerine), 9.85% Tris glycine, 50% Tissue culture supernatant
<b>Purity</b>	Protein A purified

<b>Clonality</b>	Monoclonal
<b>Clone number</b>	EPR3177
<b>Isotype</b>	IgG

## Applications

**The Abpromise guarantee** Our **Abpromise guarantee** covers the use of ab109310 in the following tested applications. The application notes include recommended starting dilutions; optimal dilutions/concentrations should be determined by the end user.

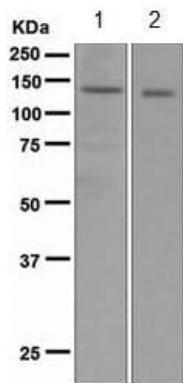
Application	Abreviews	Notes
<b>WB</b>		1/1000 - 1/10000. Detects a band of approximately 130 kDa (predicted molecular weight: 133 kDa).

**Application notes** Is unsuitable for Flow Cyt, IHC-P or IP.

## Target

<b>Function</b>	Involved in the costimulatory signal essential for T-cell receptor (TCR)-mediated T-cell activation. Its binding to DPP4 induces T-cell proliferation and NF-kappa-B activation in a T-cell receptor/CD3-dependent manner. Activates NF-kappa-B via BCL10 and IKK. Stimulates the phosphorylation of BCL10.
<b>Tissue specificity</b>	Detected in adult peripheral blood leukocytes, thymus, spleen and liver. Also found in promyelocytic leukemia HL-60 cells, chronic myelogenous leukemia K562 cells, Burkitt's lymphoma Raji cells and colorectal adenocarcinoma SW480 cells. Not detected in HeLa S3, Molt-4, A549 and G431 cells.
<b>Sequence similarities</b>	Contains 1 CARD domain. Contains 1 guanylate kinase-like domain. Contains 1 PDZ (DHR) domain.
<b>Post-translational modifications</b>	Phosphorylation at Ser-559, Ser-644 and Ser-652 by PRKCBB leads to a shift from an inactive to an active form that activates the NF-kappa-B signaling.
<b>Cellular localization</b>	Cytoplasm. Membrane raft. Colocalized with DPP4 in membrane rafts.

## Images



Western blot - Anti-Carma 1/CARD11 antibody [EPR3177] (ab109310)

**All lanes :** Anti-Carma 1/CARD11 antibody [EPR3177] (ab109310) at 1/1000 dilution

**Lane 1 :** K562 cell lysates

**Lane 2 :** Ramos cell lysates

Lysates/proteins at 10 µg per lane.

**Predicted band size:** 133 kDa

**Observed band size:** 130 kDa

### Why choose a recombinant antibody?



**Research with confidence**  
Consistent and reproducible results



**Long-term and scalable supply**  
Recombinant technology



**Success from the first experiment**  
Confirmed specificity



**Ethical standards compliant**  
Animal-free production

Anti-Carma 1/CARD11 antibody [EPR3177] (ab109310)

**Please note:** All products are "FOR RESEARCH USE ONLY. NOT FOR USE IN DIAGNOSTIC PROCEDURES"

### Our Abpromise to you: Quality guaranteed and expert technical support

- Replacement or refund for products not performing as stated on the datasheet
- Valid for 12 months from date of delivery
- Response to your inquiry within 24 hours
- We provide support in Chinese, English, French, German, Japanese and Spanish
- Extensive multi-media technical resources to help you
- We investigate all quality concerns to ensure our products perform to the highest standards

If the product does not perform as described on this datasheet, we will offer a refund or replacement. For full details of the Abpromise, please visit <https://www.abcam.com/abpromise> or contact our technical team.

### Terms and conditions

- Guarantee only valid for products bought direct from Abcam or one of our authorized distributors