


## Product datasheet

# Anti-CASC5/KNL1 antibody ab70537

★★★★★ [1 Abreviews](#) [12 References](#) [2 Images](#)

### Overview

---

<b>Product name</b>	Anti-CASC5/KNL1 antibody
<b>Description</b>	Rabbit polyclonal to CASC5/KNL1
<b>Host species</b>	Rabbit
<b>Tested applications</b>	<b>Suitable for:</b> WB, IP
<b>Species reactivity</b>	<b>Reacts with:</b> Human <b>Predicted to work with:</b> Chimpanzee, Rhesus monkey, Gorilla, Orangutan 
<b>Immunogen</b>	Synthetic peptide corresponding to Human CASC5/KNL1 aa 300-400. Synthetic peptide corresponding to Human CASC5/KNL1. Database link: NP_733468.2 Database link: <a href="#">Q8NG31</a>
<b>Positive control</b>	Whole cell lysate from HeLa or 293T cells
<b>General notes</b>	<p>The Life Science industry has been in the grips of a reproducibility crisis for a number of years. Abcam is leading the way in addressing this with our range of recombinant monoclonal antibodies and knockout edited cell lines for gold-standard validation. Please check that this product meets your needs before purchasing.</p> <p>If you have any questions, special requirements or concerns, please send us an inquiry and/or contact our Support team ahead of purchase. Recommended alternatives for this product can be found below, along with publications, customer reviews and Q&amp;As</p>

### Properties

---

<b>Form</b>	Liquid
<b>Storage instructions</b>	Shipped at 4°C. Upon delivery aliquot and store at -20°C. Avoid freeze / thaw cycles.
<b>Storage buffer</b>	pH: 7 Preservative: 0.09% Sodium azide Constituents: 1.815% Tris, 1.764% Sodium citrate, 0.021% PBS
<b>Purity</b>	Immunogen affinity purified
<b>Clonality</b>	Polyclonal
<b>Isotype</b>	IgG

### Applications

## The Abpromise guarantee

Our **Abpromise guarantee** covers the use of ab70537 in the following tested applications.

The application notes include recommended starting dilutions; optimal dilutions/concentrations should be determined by the end user.

Application	Abreviews	Notes
WB		1/2000 - 1/10000. Detects a band of approximately >300 kDa (predicted molecular weight: 265 kDa).
IP		Use at 2-5 µg/mg of lysate.

## Target

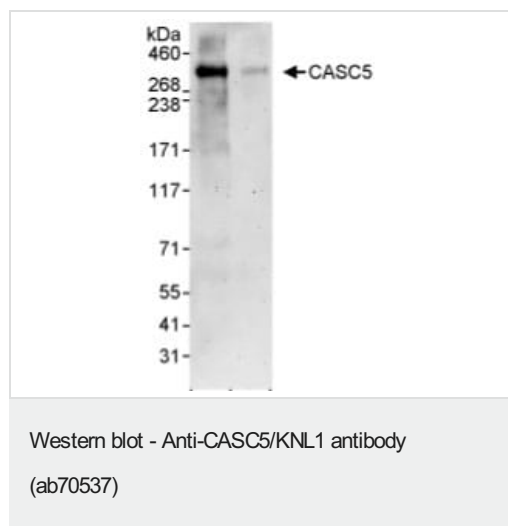
### Relevance

Part of the MIS12 complex, which may be fundamental for kinetochore formation and proper chromosome segregation during mitosis. Four known isoforms exist.

### Cellular localization

Acrosome. Nucleus.

## Images



**All lanes :** Anti-CASC5/KNL1 antibody (ab70537) at 1/5000 dilution

**Lane 1 :** Whole cell lysate from 293T cells at 50 µg

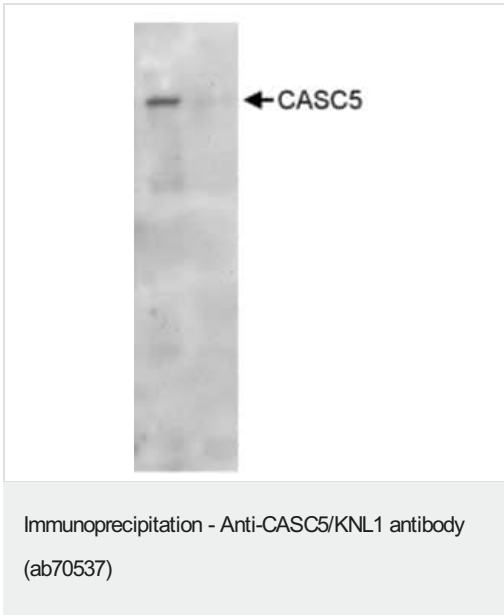
**Lane 2 :** Whole cell lysate from 293T cells at 15 µg

Developed using the ECL technique.

**Predicted band size:** 265 kDa

**Observed band size:** >300 kDa

**Exposure time:** 3 minutes



1mg of whole cell lysate from HeLa cells was immunoprecipitated using ab70537 at 3ug/mg of lysate (lane 1) or a control rabbit Ig (lane 2). For the subsequent blot, 20% of the precipitate was loaded per lane, and ab70537 was used at 1ug/ml. Detection: chemiluminescence with exposure time of 3 minutes.

**Please note:** All products are "FOR RESEARCH USE ONLY. NOT FOR USE IN DIAGNOSTIC PROCEDURES"

#### **Our Abpromise to you: Quality guaranteed and expert technical support**

---

- Replacement or refund for products not performing as stated on the datasheet
- Valid for 12 months from date of delivery
- Response to your inquiry within 24 hours
  
- We provide support in Chinese, English, French, German, Japanese and Spanish
- Extensive multi-media technical resources to help you
- We investigate all quality concerns to ensure our products perform to the highest standards

If the product does not perform as described on this datasheet, we will offer a refund or replacement. For full details of the Abpromise, please visit <https://www.abcam.com/abpromise> or contact our technical team.

#### **Terms and conditions**

---

- Guarantee only valid for products bought direct from Abcam or one of our authorized distributors