




Product datasheet

Anti-Casein Kinase 1 alpha (phospho T321) antibody ab63559

[1 Image](#)

Overview

Product name	Anti-Casein Kinase 1 alpha (phospho T321) antibody
Description	Rabbit polyclonal to Casein Kinase 1 alpha (phospho T321)
Host species	Rabbit
Specificity	Detects Casein Kinase I alpha only when phosphorylated at threonine 321.
Tested applications	Suitable for: WB
Species reactivity	Reacts with: Human Predicted to work with: Mouse, Rat 
Immunogen	Synthetic peptide corresponding to Human Casein Kinase 1 alpha aa 319-323 (phospho T321). Sequence: A-Q-Tp-P-T  Run BLAST with  Run BLAST with
Positive control	HuvEc cells.
General notes	<p>The Life Science industry has been in the grips of a reproducibility crisis for a number of years. Abcam is leading the way in addressing this with our range of recombinant monoclonal antibodies and knockout edited cell lines for gold-standard validation. Please check that this product meets your needs before purchasing.</p> <p>If you have any questions, special requirements or concerns, please send us an inquiry and/or contact our Support team ahead of purchase. Recommended alternatives for this product can be found below, along with publications, customer reviews and Q&As</p>

Properties

Form	Liquid
Storage instructions	Shipped at 4°C. Store at -20°C. Stable for 12 months at -20°C.
Storage buffer	pH: 7.40 Preservative: 0.02% Sodium azide Constituents: PBS, 50% Glycerol (glycerin, glycerine), 0.87% Sodium chloride Without Mg ²⁺ and Ca ²⁺

Purity	Immunogen affinity purified
Purification notes	Purified from rabbit antiserum by affinity chromatography using epitope specific phosphopeptide. The antibody against non-phosphopeptide was removed by chromatography using non-phosphopeptide corresponding to the phosphorylation site.
Clonality	Polyclonal
Isotype	IgG

Applications

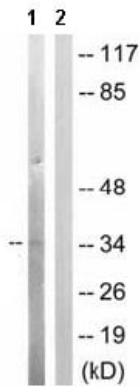
The Abpromise guarantee Our **Abpromise guarantee** covers the use of ab63559 in the following tested applications. The application notes include recommended starting dilutions; optimal dilutions/concentrations should be determined by the end user.

Application	Abreviews	Notes
WB		1/500 - 1/1000. Detects a band of approximately 39 kDa (predicted molecular weight: 39 kDa).

Target

Function	Casein kinases are operationally defined by their preferential utilization of acidic proteins such as caseins as substrates. It can phosphorylate a large number of proteins. Participates in Wnt signaling. Phosphorylates CTNNB1 at 'Ser-45'. May play a role in segregating chromosomes during mitosis.
Sequence similarities	Belongs to the protein kinase superfamily. CK1 Ser/Thr protein kinase family. Casein kinase I subfamily. Contains 1 protein kinase domain.
Cellular localization	Cytoplasm. Cytoplasm > cytoskeleton > centrosome. Chromosome > centromere > kinetochore. Nucleus speckle. Localizes to the centrosome in interphase cells, and to kinetochore fibers during mitosis.

Images



Western blot - Anti-Casein Kinase 1 alpha (phospho T321) antibody (ab63559)

All lanes : Anti-Casein Kinase 1 alpha (phospho T321) antibody (ab63559) at 1/500 dilution

Lane 1 : extracts from HuvEc cells

Lane 2 : extracts from HuvEc cells with immunizing phosphopeptide at 10 µg

Lysates/proteins at 30 µg per lane.

Predicted band size: 39 kDa

Observed band size: 39 kDa

Please note: All products are "FOR RESEARCH USE ONLY. NOT FOR USE IN DIAGNOSTIC PROCEDURES"

Our Abpromise to you: Quality guaranteed and expert technical support

- Replacement or refund for products not performing as stated on the datasheet
- Valid for 12 months from date of delivery
- Response to your inquiry within 24 hours
- We provide support in Chinese, English, French, German, Japanese and Spanish
- Extensive multi-media technical resources to help you
- We investigate all quality concerns to ensure our products perform to the highest standards

If the product does not perform as described on this datasheet, we will offer a refund or replacement. For full details of the Abpromise, please visit <https://www.abcam.com/abpromise> or contact our technical team.

Terms and conditions

- Guarantee only valid for products bought direct from Abcam or one of our authorized distributors