


Anti-Casein Kinase 1 delta/CSNK1D antibody ab151793

[4 Images](#)

Overview

Product name	Anti-Casein Kinase 1 delta/CSNK1D antibody
Description	Rabbit polyclonal to Casein Kinase 1 delta/CSNK1D
Host species	Rabbit
Tested applications	Suitable for: WB, IHC-P, ICC/IF
Species reactivity	Reacts with: Mouse, Human Predicted to work with: Rat, Cow 
Immunogen	Recombinant fragment corresponding to Human Casein Kinase 1 delta/CSNK1D aa 144-361.
Positive control	HeLa and BCL-1 whole cell lysates; HeLa cells; Human hepatoma tissue.
General notes	<p>The Life Science industry has been in the grips of a reproducibility crisis for a number of years. Abcam is leading the way in addressing this with our range of recombinant monoclonal antibodies and knockout edited cell lines for gold-standard validation. Please check that this product meets your needs before purchasing.</p> <p>If you have any questions, special requirements or concerns, please send us an inquiry and/or contact our Support team ahead of purchase. Recommended alternatives for this product can be found below, along with publications, customer reviews and Q&As</p>

Properties

Form	Liquid
Storage instructions	Shipped at 4°C. Upon delivery aliquot. Store at -20°C or -80°C. Avoid freeze / thaw cycle.
Storage buffer	pH: 7.00 Preservative: 0.01% Thimerosal (merthiolate) Constituents: 78.99% PBS, 1% BSA, 20% Glycerol (glycerin, glycerine)
Purity	Immunogen affinity purified
Clonality	Polyclonal
Isotype	IgG

Applications

The Abpromise guarantee Our **Abpromise guarantee** covers the use of ab151793 in the following tested applications.

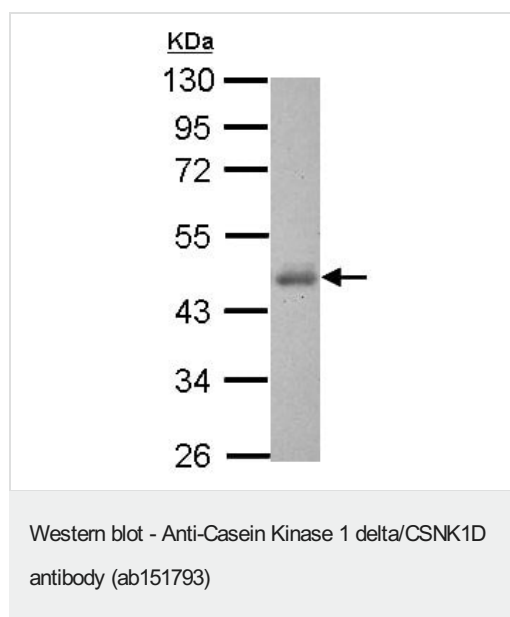
The application notes include recommended starting dilutions; optimal dilutions/concentrations should be determined by the end user.

Application	Abreviews	Notes
WB		1/500 - 1/3000. Predicted molecular weight: 47 kDa.
IHC-P		1/100 - 1/1000.
ICC/IF		1/100 - 1/1000.

Target

Function	Casein kinases are operationally defined by their preferential utilization of acidic proteins such as caseins as substrates. It can phosphorylate a large number of proteins. Participates in Wnt signaling. Central component of the circadian clock. May act as a negative regulator of circadian rhythmicity by phosphorylating PER1 and PER2. Retains PER1 in the cytoplasm.
Tissue specificity	Expressed in all tissues examined, including brain, heart, lung, liver, pancreas, kidney, placenta and skeletal muscle. In blood, highly expressed in hemopoietic cells and mature granulocytes. Also found in monocytes and lymphocytes.
Involvement in disease	Defects in CSNK1D are a cause of familial advanced sleep-phase syndrome (FASPS) [MIM:604348]. FASPS is characterized by very early sleep onset and offset. Individuals are 'morning larks' with a 4 hours advance of the sleep, temperature and melatonin rhythms.
Sequence similarities	Belongs to the protein kinase superfamily. CK1 Ser/Thr protein kinase family. Casein kinase I subfamily. Contains 1 protein kinase domain.
Post-translational modifications	Autophosphorylated on serine and threonine residues.
Cellular localization	Cytoplasm. Nucleus.

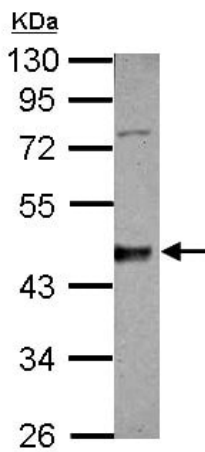
Images



Anti-Casein Kinase 1 delta/CSNK1D antibody (ab151793) at 1/2000 dilution + BCL-1 whole cell lysate at 30 µg

Predicted band size: 47 kDa

10% SDS PAGE

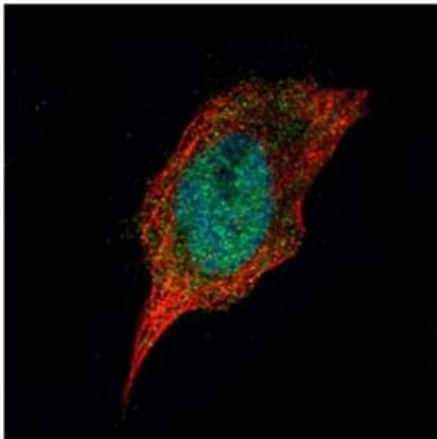


Western blot - Anti-Casein Kinase 1 delta/CSNK1D antibody (ab151793)

Anti-Casein Kinase 1 delta/CSNK1D antibody (ab151793) at 1/2000 dilution + HeLa cell lysate at 30 µg

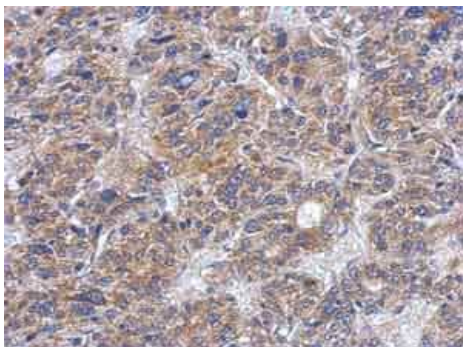
Predicted band size: 47 kDa

10% SDS PAGE



Immunocytochemistry/ Immunofluorescence - Anti-Casein Kinase 1 delta/CSNK1D antibody (ab151793)

Confocal immunofluorescence analysis of paraformaldehyde-fixed HeLa cells, labeling Casein Kinase 1 delta/CSNK1D with ab151793 at 1/500 dilution (green). Alpha-tubulin filaments were also labeled (Red).



Immunohistochemistry (Formalin/PFA-fixed paraffin-embedded sections) - Anti-Casein Kinase 1 delta/CSNK1D antibody (ab151793)

Immunohistochemical analysis of paraffin-embedded Human hepatoma tissue, labeling Casein Kinase 1 delta/CSNK1D with ab151793 at 1/500 dilution.

Please note: All products are "FOR RESEARCH USE ONLY. NOT FOR USE IN DIAGNOSTIC PROCEDURES"

Our Abpromise to you: Quality guaranteed and expert technical support

- Replacement or refund for products not performing as stated on the datasheet
- Valid for 12 months from date of delivery
- Response to your inquiry within 24 hours

- We provide support in Chinese, English, French, German, Japanese and Spanish
- Extensive multi-media technical resources to help you
- We investigate all quality concerns to ensure our products perform to the highest standards

If the product does not perform as described on this datasheet, we will offer a refund or replacement. For full details of the Abpromise, please visit <https://www.abcam.com/abpromise> or contact our technical team.

Terms and conditions

- Guarantee only valid for products bought direct from Abcam or one of our authorized distributors