

Product datasheet

Anti-Caspase-12 antibody ab62463

[10 References](#) [1 Image](#)

Overview

Product name	Anti-Caspase-12 antibody
Description	Rabbit polyclonal to Caspase-12
Host species	Rabbit
Specificity	ab62463 can be used for the detection of both the propeptide and cleaved forms of Caspase-12.
Tested applications	Suitable for: WB
Species reactivity	Reacts with: Mouse, Rat
Immunogen	Synthetic peptide corresponding to Mouse Caspase-12. Database link: O08736
Positive control	Mouse liver lysate. Rat liver lysate. Human liver tissue.
General notes	<p>The Life Science industry has been in the grips of a reproducibility crisis for a number of years. Abcam is leading the way in addressing this with our range of recombinant monoclonal antibodies and knockout edited cell lines for gold-standard validation. Please check that this product meets your needs before purchasing.</p> <p>If you have any questions, special requirements or concerns, please send us an inquiry and/or contact our Support team ahead of purchase. Recommended alternatives for this product can be found below, along with publications, customer reviews and Q&As</p>

Properties

Form	Liquid
Storage instructions	Shipped at 4°C. Store at +4°C short term (1-2 weeks). Upon delivery aliquot. Store at +4°C. Avoid freeze / thaw cycle.
Storage buffer	pH: 7.2 Preservative: 0.02% Sodium azide Constituent: PBS
Purity	Protein A purified
Clonality	Polyclonal
Isotype	IgG

Applications

The Abpromise guarantee

Our **Abpromise guarantee** covers the use of ab62463 in the following tested applications.

The application notes include recommended starting dilutions; optimal dilutions/concentrations should be determined by the end user.

Application	Abreviews	Notes
WB		Use a concentration of 1 - 2 µg/ml. Detects a band of approximately 39 kDa (predicted molecular weight: 39 kDa).

Target

Function

Has no protease activity. May reduce cytokine release in response to bacterial lipopolysaccharide during infections. Reduces activation of NF-kappa-B in response to TNF.

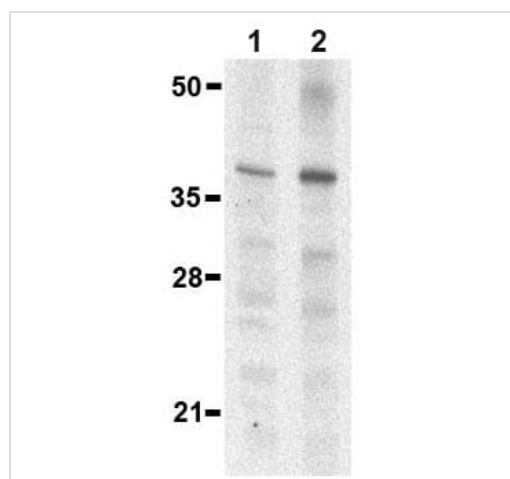
Tissue specificity

Detected in heart, kidney, liver, lung, pancreas, small intestine, spleen, stomach, thymus and testis.

Sequence similarities

Belongs to the peptidase C14A family.
Contains 1 CARD domain.

Images



Western blot - Anti-Caspase-12 antibody (ab62463)

All lanes : Anti-Caspase-12 antibody (ab62463) at 1 µg/ml

Lane 1 : Mouse liver lysate

Lane 2 : Rat liver lysate

Lysates/proteins at 15 µg/ml per lane.

Predicted band size: 39 kDa

Observed band size: 39 kDa

Please note: All products are "FOR RESEARCH USE ONLY. NOT FOR USE IN DIAGNOSTIC PROCEDURES"

Our Abpromise to you: Quality guaranteed and expert technical support

- Replacement or refund for products not performing as stated on the datasheet
- Valid for 12 months from date of delivery
- Response to your inquiry within 24 hours
- We provide support in Chinese, English, French, German, Japanese and Spanish
- Extensive multi-media technical resources to help you

- We investigate all quality concerns to ensure our products perform to the highest standards

If the product does not perform as described on this datasheet, we will offer a refund or replacement. For full details of the Abpromise, please visit <https://www.abcam.com/abpromise> or contact our technical team.

Terms and conditions

- Guarantee only valid for products bought direct from Abcam or one of our authorized distributors