

Product datasheet

Anti-Caspase-4 antibody ab25898

[8 References](#) [2 Images](#)

Overview

Product name	Anti-Caspase-4 antibody
Description	Rabbit polyclonal to Caspase-4
Host species	Rabbit
Tested applications	Suitable for: WB, IHC-P
Species reactivity	Reacts with: Mouse, Human
Immunogen	Synthetic peptide corresponding to Human Caspase-4 aa 20-70 (N terminal).
Positive control	WB: Ramos cell lysate IHC-P: Mouse spleen
General notes	<p>The Life Science industry has been in the grips of a reproducibility crisis for a number of years. Abcam is leading the way in addressing this with our range of recombinant monoclonal antibodies and knockout edited cell lines for gold-standard validation. Please check that this product meets your needs before purchasing.</p> <p>If you have any questions, special requirements or concerns, please send us an inquiry and/or contact our Support team ahead of purchase. Recommended alternatives for this product can be found below, along with publications, customer reviews and Q&As</p>

Properties

Form	Liquid
Storage instructions	Shipped at 4°C. Store at +4°C.
Storage buffer	pH: 7.2 Preservative: 0.02% Sodium azide Constituent: PBS
Purity	Immunogen affinity purified
Clonality	Polyclonal
Isotype	IgG

Applications

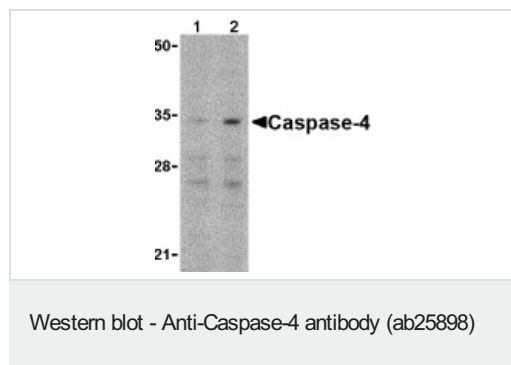
The Abpromise guarantee Our **Abpromise guarantee** covers the use of ab25898 in the following tested applications. The application notes include recommended starting dilutions; optimal dilutions/concentrations should be determined by the end user.

Application	Abreviews	Notes
WB		Use a concentration of 1 µg/ml. Detects a band of approximately 34 kDa (predicted molecular weight: 31 kDa).
IHC-P		Use a concentration of 2 µg/ml.

Target

Function	Involved in the activation cascade of caspases responsible for apoptosis execution. Cleaves caspase-1.
Tissue specificity	Widely expressed, with highest levels in spleen and lung. Moderate expression in heart and liver, low expression in skeletal muscle, kidney and testis. Not found in the brain.
Sequence similarities	Belongs to the peptidase C14A family. Contains 1 CARD domain.
Post-translational modifications	The two subunits are derived from the precursor sequence by an autocatalytic mechanism or by cleavage by Caspase-8.

Images



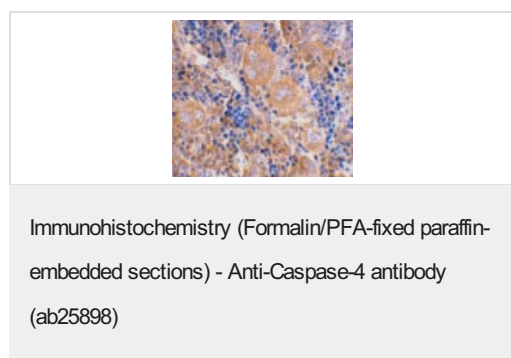
Lane 1 : Anti-Caspase-4 antibody (ab25898) at 0.5 µg/ml

Lane 2 : Anti-Caspase-4 antibody (ab25898) at 1 µg/ml

All lanes : Ramos cell lysate

Predicted band size: 31 kDa

Observed band size: ~34 kDa



ab25898 Immunohistochemical staining Caspase-4 of mouse spleen using 2 µg/ml (paraffin embedded sections).

Please note: All products are "FOR RESEARCH USE ONLY. NOT FOR USE IN DIAGNOSTIC PROCEDURES"

Our Abpromise to you: Quality guaranteed and expert technical support

- Replacement or refund for products not performing as stated on the datasheet
- Valid for 12 months from date of delivery
- Response to your inquiry within 24 hours
- We provide support in Chinese, English, French, German, Japanese and Spanish
- Extensive multi-media technical resources to help you
- We investigate all quality concerns to ensure our products perform to the highest standards

If the product does not perform as described on this datasheet, we will offer a refund or replacement. For full details of the Abpromise, please visit <https://www.abcam.com/abpromise> or contact our technical team.

Terms and conditions

- Guarantee only valid for products bought direct from Abcam or one of our authorized distributors