


Product datasheet

Anti-Caspase-6/CASP-6 antibody [EPR4405] α b108335

KO VALIDATED Recombinant RabMAb

★★★★☆ 3 Abreviews 6 References 4 Images

Overview

Product name	Anti-Caspase-6/CASP-6 antibody [EPR4405]
Description	Rabbit monoclonal [EPR4405] to Caspase-6/CASP-6
Host species	Rabbit
Specificity	ab108335 detects both the full length and cleaved forms of Caspase-6/CASP-6.
Tested applications	Suitable for: Flow Cyt (Intra), WB Unsuitable for: ICC/IF or IHC-P
Species reactivity	Reacts with: Mouse, Human Predicted to work with: Rat 
Immunogen	Synthetic peptide. This information is proprietary to Abcam and/or its suppliers.
Positive control	Jurkat cells and cell lysate.
General notes	<p>This product is a recombinant monoclonal antibody, which offers several advantages including:</p> <ul style="list-style-type: none"> - High batch-to-batch consistency and reproducibility - Improved sensitivity and specificity - Long-term security of supply - Animal-free production <p>For more information see here.</p> <p>Our RabMAb[®] technology is a patented hybridoma-based technology for making rabbit monoclonal antibodies. For details on our patents, please refer to RabMAb[®] patents.</p>

Properties

Form	Liquid
Storage instructions	Shipped at 4°C. Store at +4°C short term (1-2 weeks). Upon delivery aliquot. Store at -20°C. Avoid freeze / thaw cycle.
Storage buffer	pH: 7.20 Preservative: 0.01% Sodium azide Constituents: 9% PBS, 40% Glycerol (glycerin, glycerine), 0.05% BSA, 50% Tissue culture supernatant
Purity	Protein A purified

Clonality	Monoclonal
Clone number	EPR4405
Isotype	IgG

Applications

The Abpromise guarantee Our **Abpromise guarantee** covers the use of ab108335 in the following tested applications. The application notes include recommended starting dilutions; optimal dilutions/concentrations should be determined by the end user.

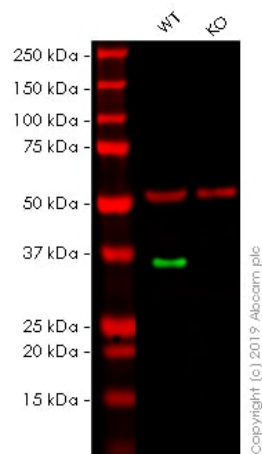
Application	Abreviews	Notes
Flow Cyt (Intra)		1/10 - 1/100. <u>ab172730</u> - Rabbit monoclonal IgG, is suitable for use as an isotype control with this antibody.
WB		1/1000 - 1/10000. Predicted molecular weight: 33 kDa.

Application notes Is unsuitable for ICC/IF or IHC-P.

Target

Function	Involved in the activation cascade of caspases responsible for apoptosis execution. Cleaves poly(ADP-ribose) polymerase in vitro, as well as lamins. Overexpression promotes programmed cell death.
Sequence similarities	Belongs to the peptidase C14A family.
Post-translational modifications	Cleavages by caspase-3, caspase-8 or -10 generate the two active subunits.
Cellular localization	Cytoplasm.

Images



Western blot - Anti-Caspase-6/CASP-6 antibody [EPR4405] (ab108335)

All lanes : Anti-Caspase-6/CASP-6 antibody [EPR4405] (ab108335) at 1/1000 dilution

Lane 1 : Wild-type HAP1 whole cell lysate

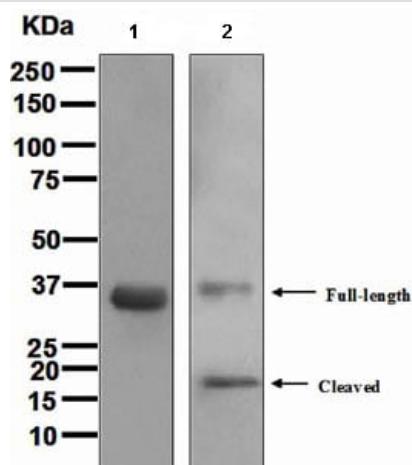
Lane 2 : CASP6 knockout HAP1 whole cell lysate

Lysates/proteins at 20 µg per lane.

Predicted band size: 33 kDa

Lanes 1 - 2: Merged signal (red and green). Green - ab108335 observed at 37 kDa. Red - loading control, **ab7291**, observed at 50 kDa.

ab108335 was shown to specifically react with in wild-type HAP1 cells as signal was lost in CASP6 knockout cells. Wild-type and CASP6 knockout samples were subjected to SDS-PAGE. The membrane was blocked with 3% NF Milk. Ab108335 and **ab7291** (Mouse anti Tubulin loading control) were incubated overnight at 4°C at 1/1000 dilution and 1/20000 dilution respectively. Blots were developed with Goat anti-Rabbit IgG H&L (IRDye® 800CW) preabsorbed **ab216773** and Goat anti-Mouse IgG H&L (IRDye® 680RD) preabsorbed **ab216776** secondary antibodies at 1/20000 dilution for 1 hour at room temperature before imaging.



Western blot - Anti-Caspase-6/CASP-6 antibody [EPR4405] (ab108335)

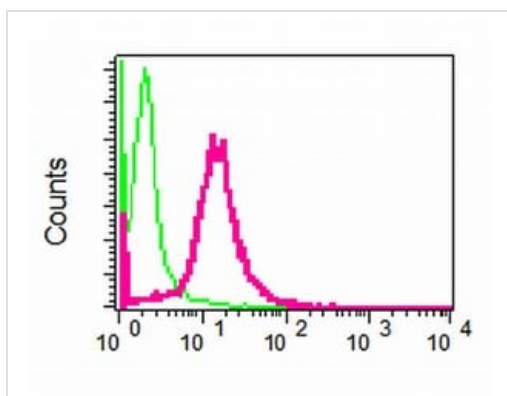
All lanes : Anti-Caspase-6/CASP-6 antibody [EPR4405] (ab108335) at 1/1000 dilution

Lane 1 : Jurkat cell lysate

Lane 2 : Jurkat + staurosporine cell lysate

Lysates/proteins at 10 µg per lane.

Predicted band size: 33 kDa



ab108335, at 1/10 dilution, staining Caspase-6/CASP-6 in permeabilized Jurkat cells by intracellular flow cytometry (shown in red). Rabbit IgG shown in green (negative).

Flow Cytometry (Intracellular) - Anti-Caspase-6/CASP-6 antibody [EPR4405] (ab108335)

Why choose a recombinant antibody?

 <p>Research with confidence Consistent and reproducible results</p>	 <p>Long-term and scalable supply Recombinant technology</p>
 <p>Success from the first experiment Confirmed specificity</p>	 <p>Ethical standards compliant Animal-free production</p>

Anti-Caspase-6/CASP-6 antibody [EPR4405] (ab108335)

Please note: All products are "FOR RESEARCH USE ONLY. NOT FOR USE IN DIAGNOSTIC PROCEDURES"

Our Abpromise to you: Quality guaranteed and expert technical support

- Replacement or refund for products not performing as stated on the datasheet
- Valid for 12 months from date of delivery
- Response to your inquiry within 24 hours
- We provide support in Chinese, English, French, German, Japanese and Spanish
- Extensive multi-media technical resources to help you
- We investigate all quality concerns to ensure our products perform to the highest standards

If the product does not perform as described on this datasheet, we will offer a refund or replacement. For full details of the Abpromise, please visit <https://www.abcam.com/abpromise> or contact our technical team.

Terms and conditions

- Guarantee only valid for products bought direct from Abcam or one of our authorized distributors