




## Product datasheet

# Anti-Cathelicidin/CLP antibody ab180760

[7 References](#) [5 Images](#)

### Overview

<b>Product name</b>	Anti-Cathelicidin/CLP antibody
<b>Description</b>	Rabbit polyclonal to Cathelicidin/CLP
<b>Host species</b>	Rabbit
<b>Tested applications</b>	<b>Suitable for:</b> WB, IHC-P
<b>Species reactivity</b>	<p><b>Reacts with:</b> Mouse, Human</p> <p><b>Predicted to work with:</b> Chimpanzee, Cynomolgus monkey, Macaque monkey, Rhesus monkey, Gorilla, African green monkey, Orangutan </p>
<b>Immunogen</b>	<p>Recombinant full length protein corresponding to Human Cathelicidin/CLP aa 31-170. Sequence:</p> <p>QVLSYKEAVL RAIDGINQRS SDANLYRLLD LDPRPTMDGD PDTPKPVSFT VKETVCPRTT QQSPEDCDFK KDGLVKRCMG TVTLNQARGS FDISCDKDNK RFALLGDFFR KSKEKIGKEF KRIVQRIKDF LRNLVPRTES</p> <p>Database link: <a href="#">P49913</a></p> <p> <a href="#">Run BLAST with</a>  <a href="#">Run BLAST with</a></p>
<b>Positive control</b>	WB: MCF7, SGC-7901, A-549 cell lysates, mouse testis tissue lysate; IHC-P: mouse testis, mouse spleen, human lung, human tonsil tissues.
<b>General notes</b>	<p>The Life Science industry has been in the grips of a reproducibility crisis for a number of years. Abcam is leading the way in addressing this with our range of recombinant monoclonal antibodies and knockout edited cell lines for gold-standard validation. Please check that this product meets your needs before purchasing.</p> <p>If you have any questions, special requirements or concerns, please send us an inquiry and/or contact our Support team ahead of purchase. Recommended alternatives for this product can be found below, along with publications, customer reviews and Q&amp;As</p>

### Properties

<b>Form</b>	Liquid
<b>Storage instructions</b>	Shipped at 4°C. Store at +4°C short term (1-2 weeks). Upon delivery aliquot. Store at -20°C long term. Avoid freeze / thaw cycle.

<b>Storage buffer</b>	pH: 7.30 Preservative: 0.02% Sodium azide Constituents: 49% PBS, 50% Glycerol
<b>Purity</b>	Immunogen affinity purified
<b>Clonality</b>	Polyclonal
<b>Isotype</b>	IgG

## Applications

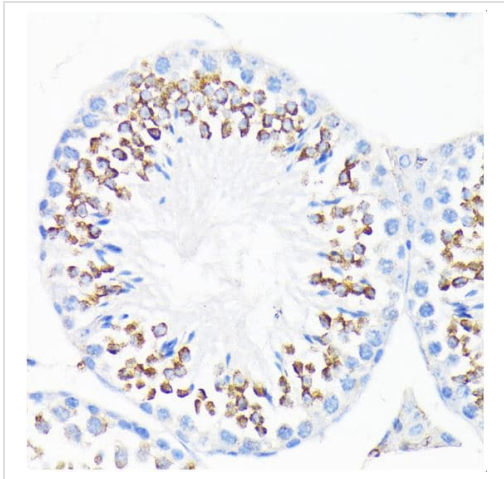
**The Abpromise guarantee** Our **Abpromise guarantee** covers the use of ab180760 in the following tested applications. The application notes include recommended starting dilutions; optimal dilutions/concentrations should be determined by the end user.

Application	Abreviews	Notes
<b>WB</b>		1/500 - 1/2000. Predicted molecular weight: 19 kDa.
<b>IHC-P</b>		1/50 - 1/200. <b><u>ab171870</u></b> - Rabbit polyclonal IgG, is suitable for use as an isotype control with this antibody.

## Target

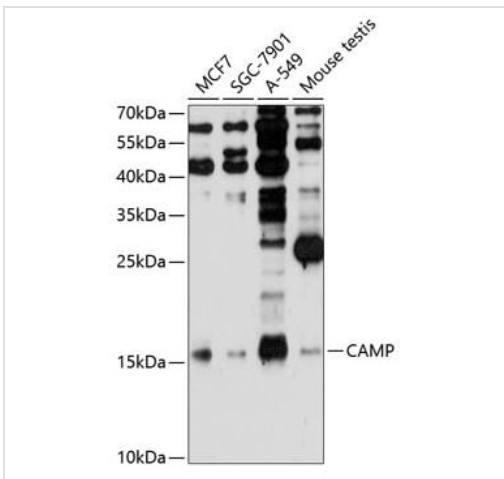
<b>Function</b>	Binds to bacterial lipopolysaccharides (LPS), has antibacterial activity.
<b>Tissue specificity</b>	Expressed in bone marrow and testis and neutrophils.
<b>Sequence similarities</b>	Belongs to the cathelicidin family.
<b>Post-translational modifications</b>	The N-terminus is blocked.
<b>Cellular localization</b>	Secreted.

## Images



Immunohistochemistry (Formalin/PFA-fixed paraffin-embedded sections) - Anti-Cathelicidin/CLP antibody (ab180760)

Paraffin-embedded mouse testis tissue stained for Cathelicidin/CLP using ab180760 at 1/200 dilution in immunohistochemical analysis.



Western blot - Anti-Cathelicidin/CLP antibody (ab180760)

**All lanes** : Anti-Cathelicidin/CLP antibody (ab180760) at 1/1000 dilution

**Lane 1** : MCF7 cell extract

**Lane 2** : SGC-7901 cell extract

**Lane 3** : A-549 cell extract

**Lane 4** : Mouse testis tissue extract

Lysates/proteins at 25 µg per lane.

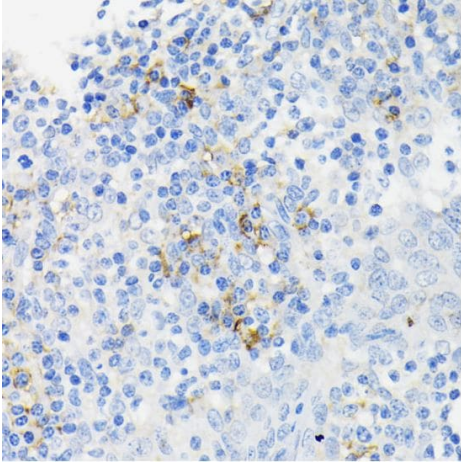
### Secondary

**All lanes** : HRP Goat Anti-Rabbit IgG

Developed using the ECL technique.

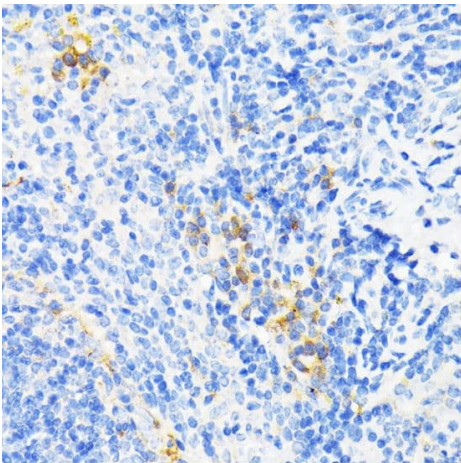
**Predicted band size:** 19 kDa

**Exposure time:** 60 seconds



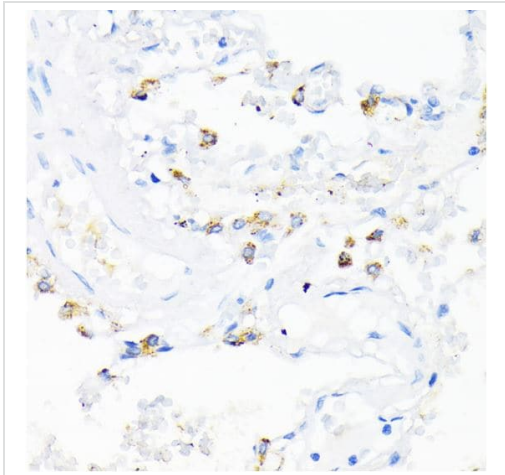
Paraffin-embedded human tonsil tissue stained for Cathelicidin/CLP using ab180760 at 1/200 dilution in immunohistochemical analysis.

Immunohistochemistry (Formalin/PFA-fixed paraffin-embedded sections) - Anti-Cathelicidin/CLP antibody (ab180760)



Paraffin-embedded mouse spleen tissue stained for Cathelicidin/CLP using ab180760 at 1/200 dilution in immunohistochemical analysis.

Immunohistochemistry (Formalin/PFA-fixed paraffin-embedded sections) - Anti-Cathelicidin/CLP antibody (ab180760)



Paraffin-embedded human lung tissue stained for Cathelicidin/CLP using ab180760 at 1/200 dilution in immunohistochemical analysis.

Immunohistochemistry (Formalin/PFA-fixed paraffin-embedded sections) - Anti-Cathelicidin/CLP antibody (ab180760)

**Please note:** All products are "FOR RESEARCH USE ONLY. NOT FOR USE IN DIAGNOSTIC PROCEDURES"

### Our Abpromise to you: Quality guaranteed and expert technical support

---

- Replacement or refund for products not performing as stated on the datasheet
- Valid for 12 months from date of delivery
- Response to your inquiry within 24 hours
- We provide support in Chinese, English, French, German, Japanese and Spanish
- Extensive multi-media technical resources to help you
- We investigate all quality concerns to ensure our products perform to the highest standards

If the product does not perform as described on this datasheet, we will offer a refund or replacement. For full details of the Abpromise, please visit <https://www.abcam.com/abpromise> or contact our technical team.

### Terms and conditions

---

- Guarantee only valid for products bought direct from Abcam or one of our authorized distributors