

Product datasheet

Anti-Cathelicidin/CLP antibody [H7] ab80895

[5 References](#) [1 Image](#)

Overview

Product name	Anti-Cathelicidin/CLP antibody [H7]
Description	Mouse monoclonal [H7] to Cathelicidin/CLP
Host species	Mouse
Specificity	This antibody is specific for Human Cathelicidin/CLP 115-NQARGSF-121 in pro domain.
Tested applications	Suitable for: WB
Species reactivity	Reacts with: Human
Immunogen	Full length protein. This information is proprietary to Abcam and/or its suppliers.
General notes	<p>The Life Science industry has been in the grips of a reproducibility crisis for a number of years. Abcam is leading the way in addressing this with our range of recombinant monoclonal antibodies and knockout edited cell lines for gold-standard validation. Please check that this product meets your needs before purchasing.</p> <p>If you have any questions, special requirements or concerns, please send us an inquiry and/or contact our Support team ahead of purchase. Recommended alternatives for this product can be found below, along with publications, customer reviews and Q&As</p>

Properties

Form	Liquid
Storage instructions	Shipped at 4°C. Upon delivery aliquot and store at -20°C. Avoid freeze / thaw cycles.
Storage buffer	Preservative: 0.1% Sodium azide Constituent: PBS
Purity	Protein G purified
Clonality	Monoclonal
Clone number	H7
Myeloma	P3U1
Isotype	IgG1

Applications

The Abpromise guarantee

Our **Abpromise guarantee** covers the use of ab80895 in the following tested applications.

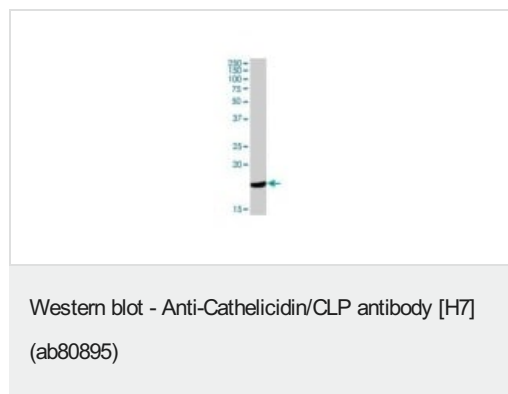
The application notes include recommended starting dilutions; optimal dilutions/concentrations should be determined by the end user.

Application	Abreviews	Notes
WB		Use at an assay dependent concentration. Predicted molecular weight: 19 kDa.

Target

Function	Binds to bacterial lipopolysaccharides (LPS), has antibacterial activity.
Tissue specificity	Expressed in bone marrow and testis and neutrophils.
Sequence similarities	Belongs to the cathelicidin family.
Post-translational modifications	The N-terminus is blocked.
Cellular localization	Secreted.

Images



Western blot analysis of Cathelicidin/CLP expression in Human spleen

Please note: All products are "FOR RESEARCH USE ONLY. NOT FOR USE IN DIAGNOSTIC PROCEDURES"

Our Abpromise to you: Quality guaranteed and expert technical support

- Replacement or refund for products not performing as stated on the datasheet
- Valid for 12 months from date of delivery
- Response to your inquiry within 24 hours
- We provide support in Chinese, English, French, German, Japanese and Spanish
- Extensive multi-media technical resources to help you
- We investigate all quality concerns to ensure our products perform to the highest standards

If the product does not perform as described on this datasheet, we will offer a refund or replacement. For full details of the Abpromise, please visit <https://www.abcam.com/abpromise> or contact our technical team.

Terms and conditions

- Guarantee only valid for products bought direct from Abcam or one of our authorized distributors