


Product datasheet

Anti-Cathelicidin/CLP antibody [mAbcam 58387] ab58387

[2 References](#) [1 Image](#)

Overview

Product name	Anti-Cathelicidin/CLP antibody [mAbcam 58387]
Description	Mouse monoclonal [mAbcam 58387] to Cathelicidin/CLP
Host species	Mouse
Tested applications	Suitable for: WB
Species reactivity	Reacts with: Human Predicted to work with: Chimpanzee, Gorilla, Orangutan 
Immunogen	Synthetic peptide corresponding to Human Cathelicidin/CLP aa 150 to the C-terminus (C terminal) conjugated to keyhole limpet haemocyanin. (Peptide available as ab106671)
Positive control	This antibody gave a positive signal in human spleen tissue lysate.
General notes	<p>CAP18 is the only human cathelicidin found so far and closely resembles CRAMP, the sole member of this gene family in mice. LL-37 is the 37 amino acid C-terminal antibacterial protein.</p> <p>This antibody clone is manufactured by Abcam. If you require a custom buffer formulation or conjugation for your experiments, please contact orders@abcam.com.</p> <p>The Life Science industry has been in the grips of a reproducibility crisis for a number of years. Abcam is leading the way in addressing this with our range of recombinant monoclonal antibodies and knockout edited cell lines for gold-standard validation. Please check that this product meets your needs before purchasing.</p> <p>If you have any questions, special requirements or concerns, please send us an inquiry and/or contact our Support team ahead of purchase. Recommended alternatives for this product can be found below, along with publications, customer reviews and Q&As</p>

Properties

Form	Liquid
Storage instructions	Shipped at 4°C. Store at +4°C short term (1-2 weeks). Upon delivery aliquot. Store at -20°C or -80°C. Avoid freeze / thaw cycle.
Storage buffer	pH: 7.40 Preservative: 0.02% Sodium azide

	Constituents: PBS, 1% BSA
Purity	Protein G purified
Primary antibody notes	CAP18 is the only human cathelicidin found so far and closely resembles CRAMP, the sole member of this gene family in mice. LL-37 is the 37 amino acid C-terminal antibacterial protein.
Clonality	Monoclonal
Clone number	mAbcam 58387
Myeloma	Sp2/0-Ag14
Isotype	IgG

Applications

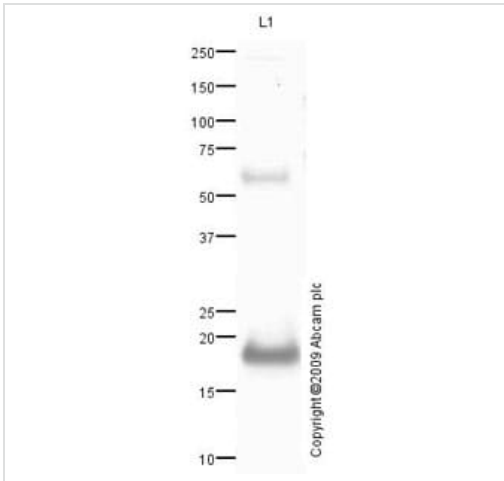
The Abpromise guarantee Our **Abpromise guarantee** covers the use of ab58387 in the following tested applications. The application notes include recommended starting dilutions; optimal dilutions/concentrations should be determined by the end user.

Application	Abreviews	Notes
WB		Use a concentration of 10 µg/ml. Detects a band of approximately 19 kDa (predicted molecular weight: 19 kDa).

Target

Function	Binds to bacterial lipopolysaccharides (LPS), has antibacterial activity.
Tissue specificity	Expressed in bone marrow and testis and neutrophils.
Sequence similarities	Belongs to the cathelicidin family.
Post-translational modifications	The N-terminus is blocked.
Cellular localization	Secreted.

Images



Western blot - Anti-Cathelicidin/CLP antibody [mAbcam 58387] (ab58387)

Anti-Cathelicidin/CLP antibody [mAbcam 58387] (ab58387) at 10 µg/ml + Human spleen tissue lysate - total protein (**ab29699**) at 20 µg

Secondary

Mouse IgG - H&L - Pre-Adsorbed (HRP) at 1/3000 dilution

Developed using the ECL technique.

Performed under reducing conditions.

Predicted band size: 19 kDa

Observed band size: 19 kDa

Additional bands at: 60 kDa. We are unsure as to the identity of these extra bands.

Exposure time: 30 seconds

Please note: All products are "FOR RESEARCH USE ONLY. NOT FOR USE IN DIAGNOSTIC PROCEDURES"

Our Abpromise to you: Quality guaranteed and expert technical support

- Replacement or refund for products not performing as stated on the datasheet
- Valid for 12 months from date of delivery
- Response to your inquiry within 24 hours
- We provide support in Chinese, English, French, German, Japanese and Spanish
- Extensive multi-media technical resources to help you
- We investigate all quality concerns to ensure our products perform to the highest standards

If the product does not perform as described on this datasheet, we will offer a refund or replacement. For full details of the Abpromise, please visit <https://www.abcam.com/abpromise> or contact our technical team.

Terms and conditions

- Guarantee only valid for products bought direct from Abcam or one of our authorized distributors