

Product datasheet

Anti-Cathepsin B antibody [CA10] ab58802

★★★★★ [6 Abreviews](#) [84 References](#) [2 Images](#)

Overview

Product name	Anti-Cathepsin B antibody [CA10]
Description	Mouse monoclonal [CA10] to Cathepsin B
Host species	Mouse
Specificity	This antibody recognizes an epitope on the heavy chain of mature Cathepsin B and therefore detects both mature (~31 kDa) and pro (~43 kDa) Cathepsin B.
Tested applications	Suitable for: Flow Cyt, WB
Species reactivity	Reacts with: Human
Immunogen	Cathepsin B purified from human liver
Epitope	Within the heavy chain of mature cathepsin B
Positive control	Flow cyt: HepG2 cells
General notes	<p>This product has switched from ascites to TCS on 26th October 2020.</p> <p>The Life Science industry has been in the grips of a reproducibility crisis for a number of years. Abcam is leading the way in addressing this with our range of recombinant monoclonal antibodies and knockout edited cell lines for gold-standard validation. Please check that this product meets your needs before purchasing.</p> <p>If you have any questions, special requirements or concerns, please send us an inquiry and/or contact our Support team ahead of purchase. Recommended alternatives for this product can be found below, along with publications, customer reviews and Q&As</p>

Properties

Form	Liquid
Storage instructions	Shipped at 4°C. Store at +4°C short term (1-2 weeks). Upon delivery aliquot. Store at -20°C long term.
Storage buffer	Constituents: 0.158% Ammonium bicarbonate, 0.1% BSA
Purity	Protein G purified
Clonality	Monoclonal
Clone number	CA10
Isotype	IgG2a

Applications

The Abpromise guarantee

Our **Abpromise guarantee** covers the use of ab58802 in the following tested applications.

The application notes include recommended starting dilutions; optimal dilutions/concentrations should be determined by the end user.

Application	Abreviews	Notes
Flow Cyt		Use 0.5µg for 10 ⁶ cells. ab170191 - Mouse monoclonal IgG2a, is suitable for use as an isotype control with this antibody.
WB	★★★★★ (4)	Use a concentration of 0.25 µg/ml. Predicted molecular weight: 38 kDa.

Target

Function

Thiol protease which is believed to participate in intracellular degradation and turnover of proteins. Has also been implicated in tumor invasion and metastasis.

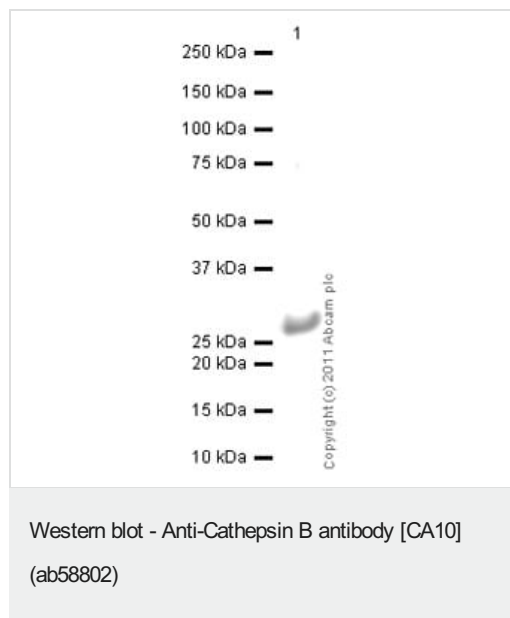
Sequence similarities

Belongs to the peptidase C1 family.

Cellular localization

Lysosome. Melanosome. Identified by mass spectrometry in melanosome fractions from stage I to stage IV.

Images



Anti-Cathepsin B antibody [CA10] (ab58802) at 0.25 µg/ml + Native human Cathepsin B protein (**ab90387**) at 0.01 µg

Secondary

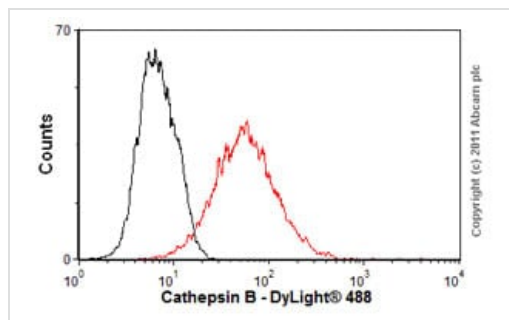
Goat Anti-Mouse IgG H&L (HRP) preadsorbed (**ab97040**) at 1/5000 dilution

Developed using the ECL technique.

Performed under reducing conditions.

Predicted band size: 38 kDa

Exposure time: 10 seconds



Flow Cytometry - Anti-Cathepsin B antibody [CA10]
(ab58802)

Overlay histogram showing HepG2 cells stained with ab58802 (red line). The cells were fixed with 4% paraformaldehyde (10 min) and then permeabilized with 0.1% PBS-Tween for 20 min. The cells were then incubated in 1x PBS / 10% normal goat serum / 0.3M glycine to block non-specific protein-protein interactions followed by the antibody (ab58802, 0.5µg/1x10⁶ cells) for 30 min at 22°C. The secondary antibody used was DyLight® 488 goat anti-mouse IgG (H+L) (**ab96879**) at 1/500 dilution for 30 min at 22°C. Isotype control antibody (black line) was mouse IgG2a [ICIGG2A] (**ab91361**, 1µg/1x10⁶ cells) used under the same conditions.

Acquisition of >5,000 events was performed. This antibody gave a positive signal in HepG2 cells fixed with 80% methanol (5 min)/permeabilized with 0.1% PBS-Tween for 20 min used under the same conditions.

Please note: All products are "FOR RESEARCH USE ONLY. NOT FOR USE IN DIAGNOSTIC PROCEDURES"

Our Abpromise to you: Quality guaranteed and expert technical support

- Replacement or refund for products not performing as stated on the datasheet
- Valid for 12 months from date of delivery
- Response to your inquiry within 24 hours
- We provide support in Chinese, English, French, German, Japanese and Spanish
- Extensive multi-media technical resources to help you
- We investigate all quality concerns to ensure our products perform to the highest standards

If the product does not perform as described on this datasheet, we will offer a refund or replacement. For full details of the Abpromise, please visit <https://www.abcam.com/abpromise> or contact our technical team.

Terms and conditions

- Guarantee only valid for products bought direct from Abcam or one of our authorized distributors