

Anti-Cathepsin C antibody - C-terminal ab199109

[1 References](#) [2 Images](#)

Overview

Product name	Anti-Cathepsin C antibody - C-terminal
Description	Rabbit polyclonal to Cathepsin C
Host species	Rabbit
Tested applications	Suitable for: IHC-P, WB
Species reactivity	Reacts with: Human
Immunogen	Synthetic peptide within Human Cathepsin C. The exact immunogen sequence used to generate this antibody is proprietary information. If additional detail on the immunogen is needed to determine the suitability of the antibody for your needs, please contact our Scientific Support team to discuss your requirements. Database link: P53634
Positive control	Human placenta tissue lysate or Human thyroid cancer tissue.
General notes	<p>The Life Science industry has been in the grips of a reproducibility crisis for a number of years. Abcam is leading the way in addressing this with our range of recombinant monoclonal antibodies and knockout edited cell lines for gold-standard validation. Please check that this product meets your needs before purchasing.</p> <p>If you have any questions, special requirements or concerns, please send us an inquiry and/or contact our Support team ahead of purchase. Recommended alternatives for this product can be found below, along with publications, customer reviews and Q&As</p>

Properties

Form	Liquid
Storage instructions	Shipped at 4°C. Store at +4°C short term (1-2 weeks). Upon delivery aliquot. Store at -20°C long term. Avoid freeze / thaw cycle.
Storage buffer	pH: 7.4 Preservative: 0.05% Sodium azide Constituents: 50% Glycerol (glycerin, glycerine), 49% PBS
Purity	Immunogen affinity purified
Clonality	Polyclonal
Isotype	IgG

Applications

The Abpromise guarantee

Our **Abpromise guarantee** covers the use of ab199109 in the following tested applications.

The application notes include recommended starting dilutions; optimal dilutions/concentrations should be determined by the end user.

Application	Abreviews	Notes
IHC-P		1/50 - 1/200. Perform heat mediated antigen retrieval with citrate buffer pH 6 before commencing with IHC staining protocol.
WB		1/500 - 1/2000. Predicted molecular weight: 52 kDa.

Target

Function

Thiol protease. Has dipeptidylpeptidase activity. Active against a broad range of dipeptide substrates composed of both polar and hydrophobic amino acids. Proline cannot occupy the P1 position and arginine cannot occupy the P2 position of the substrate. Can act as both an exopeptidase and endopeptidase. Activates serine proteases such as elastase, cathepsin G and granzymes A and B. Can also activate neuraminidase and factor XIII.

Tissue specificity

Ubiquitous. Highly expressed in lung, kidney and placenta. Detected at intermediate levels in colon, small intestine, spleen and pancreas.

Involvement in disease

Papillon-Lefevre syndrome
Haim-Munk syndrome
Periodontitis, aggressive, 1

Sequence similarities

Belongs to the peptidase C1 family.

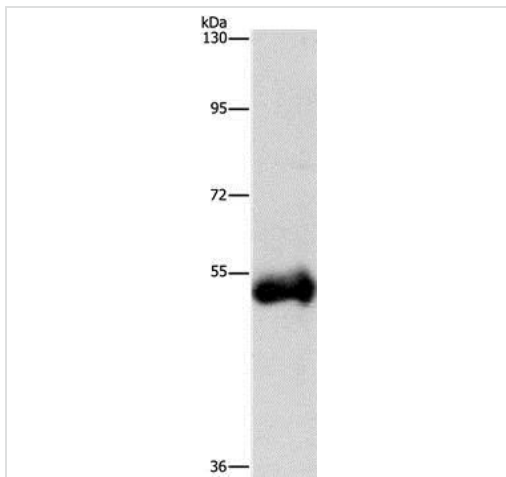
Post-translational modifications

N-glycosylated. While glycosylation at Asn-53, Asn-119 and Asn-276 is mediated by STT3A-containing complexes, glycosylation at Asn-29 is mediated STT3B-containing complexes. In approximately 50% of the complexes the exclusion domain is cleaved at position 58 or 61. The two parts of the exclusion domain are held together by a disulfide bond.

Cellular localization

Lysosome.

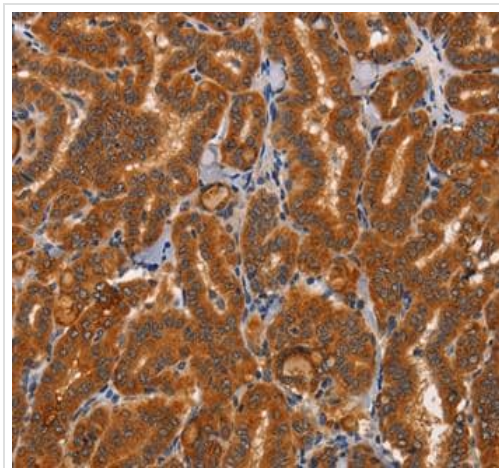
Images



Western blot - Anti-Cathepsin C antibody
(ab199109)

Anti-Cathepsin C antibody - C-terminal (ab199109) at 1/1000
dilution + Human placenta tissue lysate at 40 µg

Predicted band size: 52 kDa



Immunohistochemistry (Formalin/PFA-fixed paraffin-
embedded sections) - Anti-Cathepsin C antibody
(ab199109)

Immunohistochemical analysis of paraffin-embedded Human thyroid
cancer tissue labeling Cathepsin C using ab199109 at a 1/50
dilution.

Please note: All products are "FOR RESEARCH USE ONLY. NOT FOR USE IN DIAGNOSTIC PROCEDURES"

Our Abpromise to you: Quality guaranteed and expert technical support

- Replacement or refund for products not performing as stated on the datasheet
- Valid for 12 months from date of delivery
- Response to your inquiry within 24 hours
- We provide support in Chinese, English, French, German, Japanese and Spanish
- Extensive multi-media technical resources to help you
- We investigate all quality concerns to ensure our products perform to the highest standards

If the product does not perform as described on this datasheet, we will offer a refund or replacement. For full details of the Abpromise, please visit <https://www.abcam.com/abpromise> or contact our technical team.

Terms and conditions

- Guarantee only valid for products bought direct from Abcam or one of our authorized distributors