

Product datasheet

Anti-Cathepsin D antibody [CTD-19] ab6313

★★★★★ [16 Abreviews](#) [64 References](#) [2 Images](#)

Overview

Product name	Anti-Cathepsin D antibody [CTD-19]
Description	Mouse monoclonal [CTD-19] to Cathepsin D
Host species	Mouse
Tested applications	Suitable for: WB
Species reactivity	Reacts with: Human
Immunogen	Full length native protein (purified) corresponding to Human Cathepsin D. Database link: P07339
Positive control	Human breast carcinoma tissue or cell line extract.
General notes	<p>This product was changed from ascites to tissue culture supernatant on 21 May 2019. Please note that the dilutions may need to be adjusted accordingly. If you have any questions, please do not hesitate to contact our scientific support team.</p> <p>The Life Science industry has been in the grips of a reproducibility crisis for a number of years. Abcam is leading the way in addressing this with our range of recombinant monoclonal antibodies and knockout edited cell lines for gold-standard validation. Please check that this product meets your needs before purchasing.</p> <p>If you have any questions, special requirements or concerns, please send us an inquiry and/or contact our Support team ahead of purchase. Recommended alternatives for this product can be found below, along with publications, customer reviews and Q&As</p>

Properties

Form	Liquid
Storage instructions	Shipped at 4°C. Upon delivery aliquot and store at -20°C or -80°C. Avoid repeated freeze / thaw cycles.
Storage buffer	Preservative: 0.097% Sodium azide
Purity	Proprietary Purification
Purification notes	Purified from TCS
Clonality	Monoclonal
Clone number	CTD-19
Isotype	IgG2a

Applications

The Abpromise guarantee

Our **Abpromise guarantee** covers the use of ab6313 in the following tested applications.

The application notes include recommended starting dilutions; optimal dilutions/concentrations should be determined by the end user.

Application	Abreviews	Notes
WB	★★★★★ (12)	Use at an assay dependent concentration. Detects a band of approximately 52 kDa.

Target

Function

Acid protease active in intracellular protein breakdown. Involved in the pathogenesis of several diseases such as breast cancer and possibly Alzheimer disease.

Tissue specificity

Expressed in the aorta extracellular space (at protein level).

Involvement in disease

Ceroid lipofuscinosis, neuronal, 10

Sequence similarities

Belongs to the peptidase A1 family.
Contains 1 peptidase A1 domain.

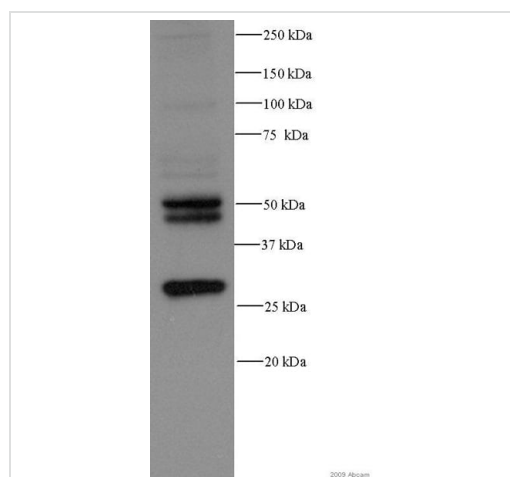
Post-translational modifications

N- and O-glycosylated.

Cellular localization

Lysosome. Melanosome. Secreted, extracellular space. Identified by mass spectrometry in melanosome fractions from stage I to stage IV. In aortic samples, detected as an extracellular protein loosely bound to the matrix (PubMed:20551380).

Images



Western blot - Anti-Cathepsin D antibody [CTD-19] (ab6313)

This image is courtesy of an anonymous Abreview

Anti-Cathepsin D antibody [CTD-19] (ab6313) at 1/1000 dilution +
MDA MB 231 whole cell lysate at 20 µg

Secondary

HRP-conjugated monoclonal sheep anti-mouse IgG at 1/5000
dilution

Developed using the ECL technique.

Performed under reducing conditions.

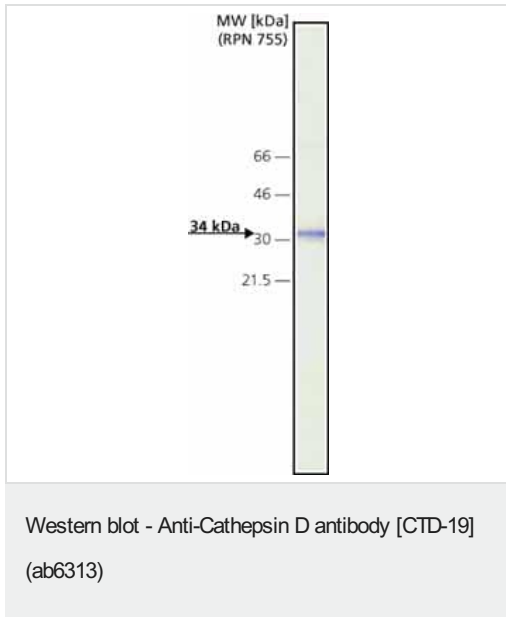
Observed band size: 28,48,50 kDa

Exposure time: 2 minutes

Blocked with 5% milk for 1 hour at 22°C.

Incubated with the primary antibody for 1 hour at 22°C in 5% TBS-T.

This image was generated using the ascites version of the product.



Anti-Cathepsin D antibody [CTD-19] (ab6313) at 1/4000 dilution + MCF7 Human breast carcinoma cells

This image was generated using the ascites version of the product.

Please note: All products are "FOR RESEARCH USE ONLY. NOT FOR USE IN DIAGNOSTIC PROCEDURES"

Our Abpromise to you: Quality guaranteed and expert technical support

- Replacement or refund for products not performing as stated on the datasheet
- Valid for 12 months from date of delivery
- Response to your inquiry within 24 hours
- We provide support in Chinese, English, French, German, Japanese and Spanish
- Extensive multi-media technical resources to help you
- We investigate all quality concerns to ensure our products perform to the highest standards

If the product does not perform as described on this datasheet, we will offer a refund or replacement. For full details of the Abpromise, please visit <https://www.abcam.com/abpromise> or contact our technical team.

Terms and conditions

- Guarantee only valid for products bought direct from Abcam or one of our authorized distributors