

## Product datasheet

# Anti-Cathepsin G antibody ab197354

★★★★★ [1 Abreviews](#) [8 References](#) [1 Image](#)

### Overview

---

<b>Product name</b>	Anti-Cathepsin G antibody
<b>Description</b>	Rabbit polyclonal to Cathepsin G
<b>Host species</b>	Rabbit
<b>Tested applications</b>	<b>Suitable for:</b> WB
<b>Species reactivity</b>	<b>Reacts with:</b> Mouse
<b>Immunogen</b>	Recombinant fragment corresponding to Human Cathepsin G (internal sequence). Database link: <a href="#">P08311</a>
<b>Positive control</b>	Mouse brain tissue lysate
<b>General notes</b>	<p>The Life Science industry has been in the grips of a reproducibility crisis for a number of years. Abcam is leading the way in addressing this with our range of recombinant monoclonal antibodies and knockout edited cell lines for gold-standard validation. Please check that this product meets your needs before purchasing.</p> <p>If you have any questions, special requirements or concerns, please send us an inquiry and/or contact our Support team ahead of purchase. Recommended alternatives for this product can be found below, along with publications, customer reviews and Q&amp;As</p>

### Properties

---

<b>Form</b>	Liquid
<b>Storage instructions</b>	Shipped at 4°C. Store at +4°C short term (1-2 weeks). Upon delivery aliquot. Store at -20°C long term. Avoid freeze / thaw cycle.
<b>Storage buffer</b>	pH: 7.4 Preservative: 0.05% Sodium azide Constituents: 49% PBS, 50% Glycerol (glycerin, glycerine)
<b>Purity</b>	Immunogen affinity purified
<b>Clonality</b>	Polyclonal
<b>Isotype</b>	IgG

### Applications

---

## The Abpromise guarantee

Our **Abpromise guarantee** covers the use of ab197354 in the following tested applications.

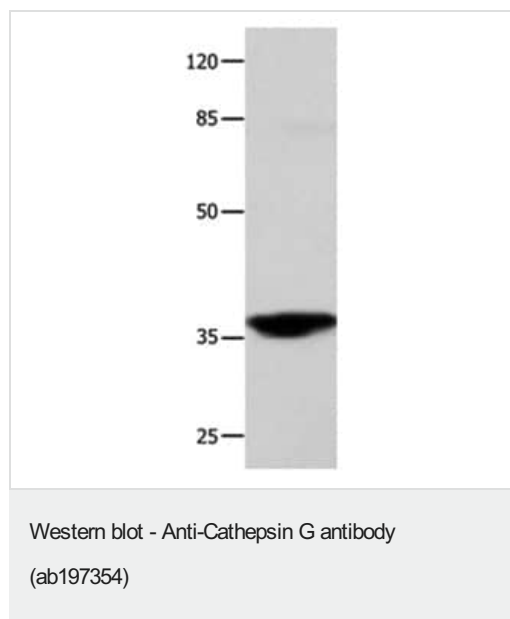
The application notes include recommended starting dilutions; optimal dilutions/concentrations should be determined by the end user.

Application	Abreviews	Notes
WB	★★★★★ (1)	1/500 - 1/2000. Predicted molecular weight: 29 kDa.

## Target

<b>Function</b>	Serine protease with trypsin- and chymotrypsin-like specificity. Cleaves complement C3. Has antibacterial activity against the Gram-negative bacterium <i>P.aeruginosa</i> , antibacterial activity is inhibited by LPS from <i>P.aeruginosa</i> , Z-Gly-Leu-Phe-CH <sub>2</sub> Cl and phenylmethylsulfonyl fluoride.
<b>Sequence similarities</b>	Belongs to the peptidase S1 family. Contains 1 peptidase S1 domain.
<b>Cellular localization</b>	Cell surface.

## Images



Anti-Cathepsin G antibody (ab197354) at 1/450 dilution + Mouse brain tissue lysate at 40 µg

### Secondary

Anti-rabbit IgG at 1/8000 dilution

**Predicted band size:** 29 kDa

**Exposure time:** 10 seconds

**Gel:** 10%SDS-PAGE.

**Please note:** All products are "FOR RESEARCH USE ONLY. NOT FOR USE IN DIAGNOSTIC PROCEDURES"

## Our Abpromise to you: Quality guaranteed and expert technical support

- Replacement or refund for products not performing as stated on the datasheet
- Valid for 12 months from date of delivery
- Response to your inquiry within 24 hours
- We provide support in Chinese, English, French, German, Japanese and Spanish
- Extensive multi-media technical resources to help you

- We investigate all quality concerns to ensure our products perform to the highest standards

If the product does not perform as described on this datasheet, we will offer a refund or replacement. For full details of the Abpromise, please visit <https://www.abcam.com/abpromise> or contact our technical team.

#### **Terms and conditions**

---

- Guarantee only valid for products bought direct from Abcam or one of our authorized distributors