

Product datasheet

Anti-Caveolin-1 (phospho Y14) antibody ab38468

★★★★★ [2 Abreviews](#) [1 References](#) [1 Image](#)

Overview

Product name	Anti-Caveolin-1 (phospho Y14) antibody
Description	Rabbit polyclonal to Caveolin-1 (phospho Y14)
Host species	Rabbit
Tested applications	Suitable for: WB
Species reactivity	Reacts with: Mouse
Immunogen	Synthetic peptide corresponding to Human Caveolin-1 (phospho Y14). Database link: Q03135
General notes	<p>The Life Science industry has been in the grips of a reproducibility crisis for a number of years. Abcam is leading the way in addressing this with our range of recombinant monoclonal antibodies and knockout edited cell lines for gold-standard validation. Please check that this product meets your needs before purchasing.</p> <p>If you have any questions, special requirements or concerns, please send us an inquiry and/or contact our Support team ahead of purchase. Recommended alternatives for this product can be found below, along with publications, customer reviews and Q&As</p>

Properties

Form	Liquid
Storage instructions	Shipped at 4°C. Upon delivery aliquot and store at -20°C. Avoid freeze / thaw cycles.
Storage buffer	pH: 7.40 Preservative: 0.02% Sodium azide Constituents: 50% Glycerol, 0.87% Sodium chloride, PBS
	Without Mg ²⁺ and Ca ²⁺
Purity	Immunogen affinity purified
Purification notes	The antibody against non-phosphopeptide was removed by chromatography using non-phosphopeptide corresponding to the phosphorylation site.
Clonality	Polyclonal
Isotype	IgG

Applications

The Abpromise guarantee

Our **Abpromise guarantee** covers the use of ab38468 in the following tested applications.

The application notes include recommended starting dilutions; optimal dilutions/concentrations should be determined by the end user.

Application	Abreviews	Notes
WB	★★★★★ (1)	1/500 - 1/1000. Detects a band of approximately 20 kDa (predicted molecular weight: 20 kDa).

Target

Function

May act as a scaffolding protein within caveolar membranes. Interacts directly with G-protein alpha subunits and can functionally regulate their activity (By similarity). Involved in the costimulatory signal essential for T-cell receptor (TCR)-mediated T-cell activation. Its binding to DPP4 induces T-cell proliferation and NF-kappa-B activation in a T-cell receptor/CD3-dependent manner. Recruits CTNNB1 to caveolar membranes and may regulate CTNNB1-mediated signaling through the Wnt pathway.

Tissue specificity

Expressed in muscle and lung, less so in liver, brain and kidney.

Involvement in disease

Defects in CAV1 are the cause of congenital generalized lipodystrophy type 3 (CGL3) [MIM:612526]; also called Berardinelli-Seip congenital lipodystrophy type 3 (BSCL3). Congenital generalized lipodystrophies are autosomal recessive disorders characterized by a near absence of adipose tissue, extreme insulin resistance, hypertriglyceridemia, hepatic steatosis and early onset of diabetes.

Sequence similarities

Belongs to the caveolin family.

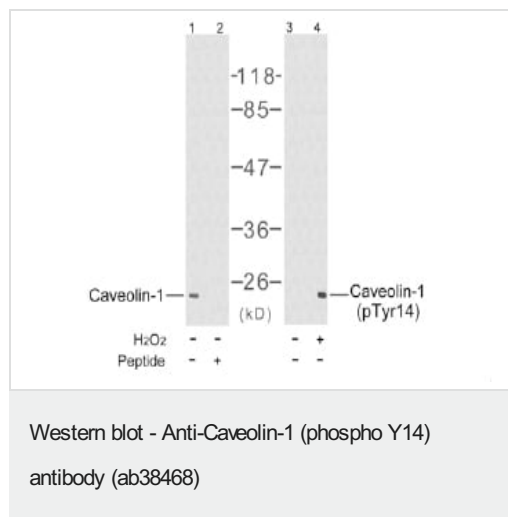
Post-translational modifications

The initiator methionine for isoform Beta is removed during or just after translation. The new N-terminal amino acid is then N-acetylated.

Cellular localization

Golgi apparatus membrane. Cell membrane. Membrane > caveola. Membrane raft. Colocalized with DPP4 in membrane rafts. Potential hairpin-like structure in the membrane. Membrane protein of caveolae.

Images



Lanes 1-2 : Caveolin-1 Antibody

Lanes 3-4 : Anti-Caveolin-1 (phospho Y14) antibody (ab38468) at 1/500 dilution

Lane 1 : NIH 3T3 cell extract

Lane 2 : NIH 3T3 cell extract. Pre-incubated with synthesized peptide

Lane 3 : NIH 3T3 cell extract.

Lane 4 : NIH 3T3 cell extract. Treated with H₂O₂.

Predicted band size: 20 kDa

Observed band size: 20 kDa

Please note: All products are "FOR RESEARCH USE ONLY. NOT FOR USE IN DIAGNOSTIC PROCEDURES"

Our Abpromise to you: Quality guaranteed and expert technical support

- Replacement or refund for products not performing as stated on the datasheet
- Valid for 12 months from date of delivery
- Response to your inquiry within 24 hours

- We provide support in Chinese, English, French, German, Japanese and Spanish
- Extensive multi-media technical resources to help you
- We investigate all quality concerns to ensure our products perform to the highest standards

If the product does not perform as described on this datasheet, we will offer a refund or replacement. For full details of the Abpromise, please visit <https://www.abcam.com/abpromise> or contact our technical team.

Terms and conditions

- Guarantee only valid for products bought direct from Abcam or one of our authorized distributors