


## Product datasheet

# Anti-CBF1 interacting corepressor/CIR1 antibody ab113203

2 Images

### Overview

<b>Product name</b>	Anti-CBF1 interacting corepressor/CIR1 antibody
<b>Description</b>	Rabbit polyclonal to CBF1 interacting corepressor/CIR1
<b>Host species</b>	Rabbit
<b>Tested applications</b>	<b>Suitable for:</b> WB, IP
<b>Species reactivity</b>	<b>Reacts with:</b> Human <b>Predicted to work with:</b> Chimpanzee 
<b>Immunogen</b>	Synthetic peptide corresponding to Human CBF1 interacting corepressor/CIR1 aa 400-500. Database link: <a href="#">Q86X95</a>
<b>Positive control</b>	HeLa, Jurkat and 293T cell lysates.
<b>General notes</b>	<p>The Life Science industry has been in the grips of a reproducibility crisis for a number of years. Abcam is leading the way in addressing this with our range of recombinant monoclonal antibodies and knockout edited cell lines for gold-standard validation. Please check that this product meets your needs before purchasing.</p> <p>If you have any questions, special requirements or concerns, please send us an inquiry and/or contact our Support team ahead of purchase. Recommended alternatives for this product can be found below, along with publications, customer reviews and Q&amp;As</p>

### Properties

<b>Form</b>	Liquid
<b>Storage instructions</b>	Shipped at 4°C. Upon delivery aliquot and store at -20°C. Avoid freeze / thaw cycles.
<b>Storage buffer</b>	pH: 7 Preservative: 0.09% Sodium azide Constituent: 99.91% Tris citrate/phosphate
<b>Purity</b>	pH 7 to 8 Immunogen affinity purified
<b>Clonality</b>	Polyclonal
<b>Isotype</b>	IgG

## Applications

### The Abpromise guarantee

Our **Abpromise guarantee** covers the use of ab113203 in the following tested applications.

The application notes include recommended starting dilutions; optimal dilutions/concentrations should be determined by the end user.

Application	Abreviews	Notes
WB		1/2000 - 1/10000. Predicted molecular weight: 52 kDa.
IP		Use at 2-10 µg/mg of lysate.

## Target

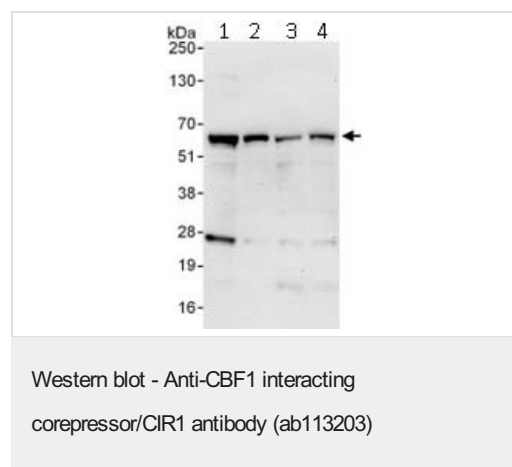
### Relevance

CBF1 interacting corepressor may modulate splice site selection during alternative splicing of pre-mRNAs. It regulates transcription and acts as corepressor for RBPSUH; recruits RBPSUH to the Sin3-histone deacetylase complex (HDAC).

### Cellular localization

Nuclear

## Images



**All lanes :** Anti-CBF1 interacting corepressor/CIR1 antibody (ab113203) at 0.1 µg/ml

**Lane 1 :** HeLa cell Lysate at 50 µg

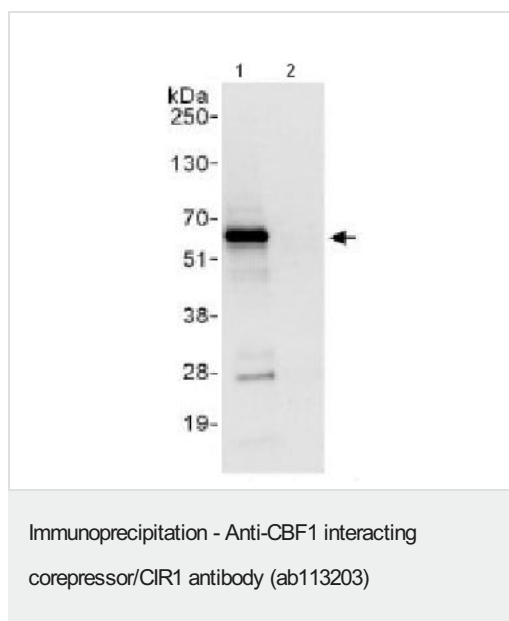
**Lane 2 :** HeLa cell Lysate at 15 µg

**Lane 3 :** Jurkat cell Lysate at 50 µg

**Lane 4 :** 293T cell Lysate at 50 µg

**Predicted band size:** 52 kDa

**Exposure time:** 30 seconds



Detection of CBF1 interacting corepressor/CIR1 by Western Blot of Immunoprecipitate.

ab113203 at 1 µg/ml staining CBF1 interacting corepressor/CIR1 in HeLa whole cell lysate immunoprecipitated using ab113203 at 6 µg/mg lysate (1 mg/IP; 20% of IP loaded/lane). Detection: Chemiluminescence with exposure time of 3 seconds.

**Please note:** All products are "FOR RESEARCH USE ONLY. NOT FOR USE IN DIAGNOSTIC PROCEDURES"

### Our Abpromise to you: Quality guaranteed and expert technical support

- Replacement or refund for products not performing as stated on the datasheet
- Valid for 12 months from date of delivery
- Response to your inquiry within 24 hours
- We provide support in Chinese, English, French, German, Japanese and Spanish
- Extensive multi-media technical resources to help you
- We investigate all quality concerns to ensure our products perform to the highest standards

If the product does not perform as described on this datasheet, we will offer a refund or replacement. For full details of the Abpromise, please visit <https://www.abcam.com/abpromise> or contact our technical team.

### Terms and conditions

- Guarantee only valid for products bought direct from Abcam or one of our authorized distributors