


Product datasheet

Anti-cbx7 antibody ab21873

★★★★★ [7 Abreviews](#) [49 References](#) [3 Images](#)

Overview

Product name	Anti-cbx7 antibody
Description	Rabbit polyclonal to cbx7
Host species	Rabbit
Specificity	Replenishment batches of our polyclonal antibody, ab21873 are tested in WB. Previous batches were additionally validated in IHC-P. This application is still expected to work and is covered by our Abpromise guarantee. You may also be interested in our alternative recombinant antibody, ab178411 .
Tested applications	Suitable for: WB, IHC-P
Species reactivity	Reacts with: Human Predicted to work with: Mouse, Rat, Cow, Chimpanzee 
Immunogen	Synthetic peptide within Human cbx7 aa 200 to the C-terminus (C terminal) conjugated to keyhole limpet haemocyanin. The exact sequence is proprietary. Database link: O95931 (Peptide available as ab22424)
General notes	<p>The Life Science industry has been in the grips of a reproducibility crisis for a number of years. Abcam is leading the way in addressing this with our range of recombinant monoclonal antibodies and knockout edited cell lines for gold-standard validation. Please check that this product meets your needs before purchasing.</p> <p>If you have any questions, special requirements or concerns, please send us an inquiry and/or contact our Support team ahead of purchase. Recommended alternatives for this product can be found below, along with publications, customer reviews and Q&As</p>

Properties

Form	Liquid
Storage instructions	Shipped at 4°C. Store at +4°C short term (1-2 weeks). Upon delivery aliquot. Store at -20°C or -80°C. Avoid freeze / thaw cycle.
Storage buffer	pH: 7.40 Preservative: 0.02% Sodium azide Constituent: PBS

Batches of this product that have a concentration < 1mg/ml may have BSA added as a stabilising

agent. If you would like information about the formulation of a specific lot, please contact our scientific support team who will be happy to help.

Purity	Immunogen affinity purified
Clonality	Polyclonal
Isotype	IgG

Applications

The Abpromise guarantee Our **Abpromise guarantee** covers the use of ab21873 in the following tested applications. The application notes include recommended starting dilutions; optimal dilutions/concentrations should be determined by the end user.

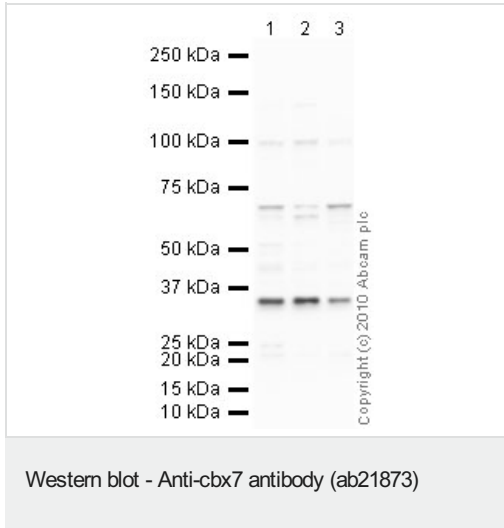
Application	Abreviews	Notes
WB	★★★★★ (2)	Use a concentration of 1 µg/ml. Detects a band of approximately 35 kDa (predicted molecular weight: 28 kDa).
IHC-P		Use a concentration of 1 µg/ml.

Target

Relevance Control of cell proliferation by Polycomb group proteins (PcG) is an important facet of cellular homeostasis and its disruption can promote tumorigenesis. CBX7 is a novel PcG protein which is found to control the growth of normal cells. CBX7 is a gene that encodes a Polycomb protein, as shown by sequence homology, its interaction with Ring1 and its localization to nuclear Polycomb bodies. CBX7 extends the lifespan of a wide range of normal human cells and immortalizes mouse fibroblasts by downregulating expression of the *Ink4a/Arf* locus. CBX7 does not interfere or colocalize with Bmi1, and both can exert their actions independently of each other as shown by reverse genetics. CBX7 was highly expressed in three different prostate cancer cell lines and present at elevated levels in normal prostate. (Gil et al., 2004).

Cellular localization Nuclear

Images



All lanes : Anti-cbx7 antibody (ab21873) at 1 µg

Lane 1 : HeLa (Human epithelial carcinoma cell line) Nuclear Lysate

Lane 2 : Jurkat nuclear extract lysate ([ab14844](#))

Lane 3 : Hep G2 nuclear extract lysate ([ab14660](#))

Lysates/proteins at 10 µg per lane.

Secondary

All lanes : Goat polyclonal to Rabbit IgG - H&L - Pre-Adsorbed (HRP) at 1/3000 dilution

Developed using the ECL technique.

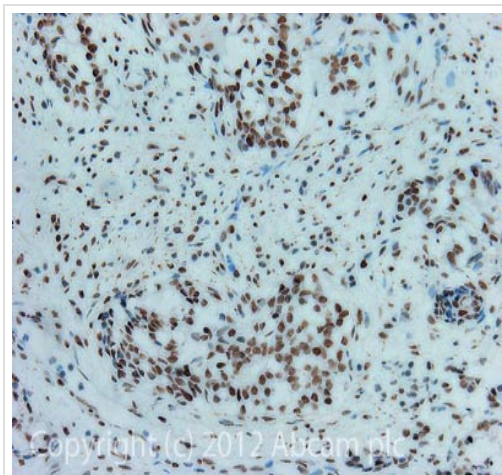
Performed under reducing conditions.

Predicted band size: 28 kDa

Observed band size: 34 kDa

Additional bands at: 100 kDa, 70 kDa. We are unsure as to the identity of these extra bands.

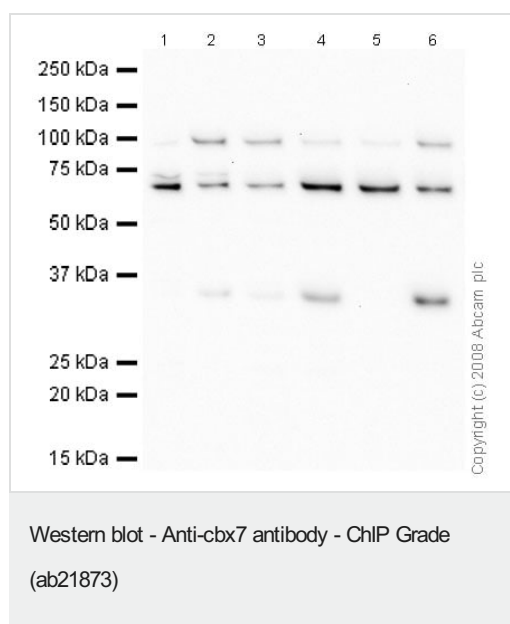
Exposure time: 30 seconds



Immunohistochemistry (Formalin/PFA-fixed paraffin-embedded sections) - Anti-cbx7 antibody - ChIP Grade (ab21873)

IHC image of cbx7 staining in Human normal prostate formalin fixed paraffin embedded tissue section, performed on a Leica BondTM system using the standard protocol F. The section was pre-treated using heat mediated antigen retrieval with sodium citrate buffer (pH6, epitope retrieval solution 1) for 20 mins. The section was then incubated with ab21873, 1 µg/ml, for 15 mins at room temperature and detected using an HRP conjugated compact polymer system. DAB was used as the chromogen. The section was then counterstained with haematoxylin and mounted with DPX.

For other IHC staining systems (automated and non-automated) customers should optimize variable parameters such as antigen retrieval conditions, primary antibody concentration and antibody incubation times.



All lanes : Anti-cbx7 antibody (ab21873) at 1 µg/ml

Lane 1 : HeLa (Human epithelial carcinoma cell line) Whole Cell Lysate

Lane 2 : HeLa (Human epithelial carcinoma cell line) Nuclear Lysate

Lane 3 : Jurkat (Human T cell lymphoblast-like cell line) Whole Cell Lysate

Lane 4 : Jurkat nuclear extract lysate ([ab14844](#))

Lane 5 : HepG2 (Human hepatocellular liver carcinoma cell line) Whole Cell Lysate

Lane 6 : Hep G2 nuclear extract lysate ([ab14660](#))

Lysates/proteins at 10 µg per lane.

Secondary

All lanes : Goat Polyclonal to rabbit IgG - H&L - Pre adsorbed (HRP) at 1/3000 dilution

Performed under reducing conditions.

Predicted band size: 28 kDa

Observed band size: 34 kDa

Additional bands at: 100 kDa, 70 kDa. We are unsure as to the identity of these extra bands.

Please note: All products are "FOR RESEARCH USE ONLY. NOT FOR USE IN DIAGNOSTIC PROCEDURES"

Our Abpromise to you: Quality guaranteed and expert technical support

- Replacement or refund for products not performing as stated on the datasheet
- Valid for 12 months from date of delivery
- Response to your inquiry within 24 hours
- We provide support in Chinese, English, French, German, Japanese and Spanish
- Extensive multi-media technical resources to help you
- We investigate all quality concerns to ensure our products perform to the highest standards

If the product does not perform as described on this datasheet, we will offer a refund or replacement. For full details of the Abpromise, please visit <https://www.abcam.com/abpromise> or contact our technical team.

Terms and conditions

- Guarantee only valid for products bought direct from Abcam or one of our authorized distributors