

Product datasheet

Anti-CCDC125 antibody ab122750

3 Images

Overview

Product name	Anti-CCDC125 antibody
Description	Rabbit polyclonal to CCDC125
Host species	Rabbit
Tested applications	Suitable for: IHC-P, WB, ICC/IF
Species reactivity	Reacts with: Human
Immunogen	antigen sequence: VLNQRYLEAL AMLDIKQQKM AQENMCCDKS GFAEASGLEL AVLGACLCHG PGGNPCSCAR MAASTRKLLL QLKQELEILQ KSKEEAYVMA DAFRIAFE, corresponding to amino acids 234-331 of Human CCDC125. Run BLAST with Expasy Run BLAST with NCBI
Positive control	Human colon tissue; U 2 OS cells; RT 4, U 251 MG, Human liver and tonsil lysates.
General notes	<p>The Life Science industry has been in the grips of a reproducibility crisis for a number of years. Abcam is leading the way in addressing this with our range of recombinant monoclonal antibodies and knockout edited cell lines for gold-standard validation. Please check that this product meets your needs before purchasing.</p> <p>If you have any questions, special requirements or concerns, please send us an inquiry and/or contact our Support team ahead of purchase. Recommended alternatives for this product can be found below, along with publications, customer reviews and Q&As</p>

Properties

Form	Liquid
Storage instructions	Shipped at 4°C. Store at -20°C or -80°C. Avoid freeze / thaw cycle. Store undiluted.
Storage buffer	pH: 7.20 Preservative: 0.02% Sodium azide Constituents: 59% PBS, 40% Glycerol (glycerin, glycerine)
Purity	Immunogen affinity purified
Clonality	Polyclonal
Isotype	IgG

Applications

The Abpromise guarantee

Our **Abpromise guarantee** covers the use of ab122750 in the following tested applications.

The application notes include recommended starting dilutions; optimal dilutions/concentrations should be determined by the end user.

Application	Abreviews	Notes
IHC-P		1/20 - 1/50. Perform heat mediated antigen retrieval with citrate buffer pH 6 before commencing with IHC staining protocol.
WB		Use a concentration of 0.04 - 0.4 µg/ml.
ICC/IF		Use a concentration of 1 - 4 µg/ml. using PFA/Triton X-100 Fixation/Permeabilization.

Target

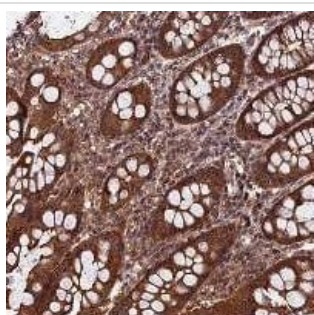
Function

May be involved in the regulation of cell migration.

Cellular localization

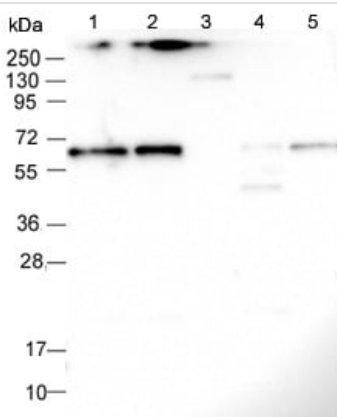
Cytoplasm.

Images



Immunohistochemistry (Formalin/PFA-fixed paraffin-embedded sections) - Anti-CCDC125 antibody (ab122750)

ab122750 at 1/20 dilution, staining CCDC125 in Paraffin-embedded Human colon tissue by Immunohistochemistry.



Western blot - Anti-CCDC125 antibody (ab122750)

All lanes : Anti-CCDC125 antibody (ab122750) at 1/250 dilution

Lane 1 : RT 4 lysate

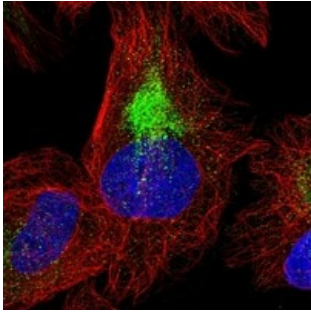
Lane 2 : U 251 MG lysate

Lane 3 : Human Plasma lysate

Lane 4 : Human liver lysate

Lane 5 : Human tonsil lysate

Developed using the ECL technique.



ab122750 at 4 $\mu\text{g/ml}$ staining CCDC125 in PFA/Triton X-100 fixed/permeabilized U 2 OS cells by Immunofluorescence (green).

Immunocytochemistry/ Immunofluorescence - Anti-CCDC125 antibody (ab122750)

Please note: All products are "FOR RESEARCH USE ONLY. NOT FOR USE IN DIAGNOSTIC PROCEDURES"

Our Abpromise to you: Quality guaranteed and expert technical support

- Replacement or refund for products not performing as stated on the datasheet
- Valid for 12 months from date of delivery
- Response to your inquiry within 24 hours
- We provide support in Chinese, English, French, German, Japanese and Spanish
- Extensive multi-media technical resources to help you
- We investigate all quality concerns to ensure our products perform to the highest standards

If the product does not perform as described on this datasheet, we will offer a refund or replacement. For full details of the Abpromise, please visit <https://www.abcam.com/abpromise> or contact our technical team.

Terms and conditions

- Guarantee only valid for products bought direct from Abcam or one of our authorized distributors