

Product datasheet

Anti-CCL21 antibody [MM0146-2H26] ab89396

2 Images

Overview

Product name	Anti-CCL21 antibody [MM0146-2H26]
Description	Mouse monoclonal [MM0146-2H26] to CCL21
Host species	Mouse
Tested applications	Suitable for: WB, IHC-P
Species reactivity	Reacts with: Human
Immunogen	Recombinant full length protein corresponding to Human CCL21. Database link: O00585
Positive control	WB: Human placenta tissue lysate. IHC-P: Human placenta tissue.
General notes	<p>Reconstituted antibody should be aliquoted and can be stored frozen at < -20 for at least six months without detectable loss of activity. Avoid repeated freeze-thaw cycles.</p> <p>The Life Science industry has been in the grips of a reproducibility crisis for a number of years. Abcam is leading the way in addressing this with our range of recombinant monoclonal antibodies and knockout edited cell lines for gold-standard validation. Please check that this product meets your needs before purchasing.</p> <p>If you have any questions, special requirements or concerns, please send us an inquiry and/or contact our Support team ahead of purchase. Recommended alternatives for this product can be found below, along with publications, customer reviews and Q&As</p>

Properties

Form	Lyophilized: Reconstitute the antibody with 200 µl sterile PBS to give a final concentration of 0.5 mg/ml.
Storage instructions	Shipped at 4°C. Store at -80°C.
Storage buffer	Constituent: PBS
Purity	Protein G purified
Purification notes	The IgG fraction of culture supernatant was purified by Protein G affinity chromatography and filtered through a 0.2 µm filter.
Clonality	Monoclonal
Clone number	MM0146-2H26
Isotype	IgG1

Applications

The Abpromise guarantee

Our **Abpromise guarantee** covers the use of ab89396 in the following tested applications.

The application notes include recommended starting dilutions; optimal dilutions/concentrations should be determined by the end user.

Application	Abreviews	Notes
WB		1/500 - 1/1000. Predicted molecular weight: 15 kDa.
IHC-P		Use at an assay dependent concentration.

Target

Function

Inhibits hemopoiesis and stimulates chemotaxis. Chemotactic in vitro for thymocytes and activated T-cells, but not for B-cells, macrophages, or neutrophils. Shows preferential activity towards naive T-cells. May play a role in mediating homing of lymphocytes to secondary lymphoid organs.

Tissue specificity

Highly expressed in high endothelial venules of lymph nodes, spleen and appendix. Intermediate levels found in small intestine, thyroid gland and trachea. Low level expression in thymus, bone marrow, liver, and pancreas. Also found in tonsil, fetal heart and fetal spleen.

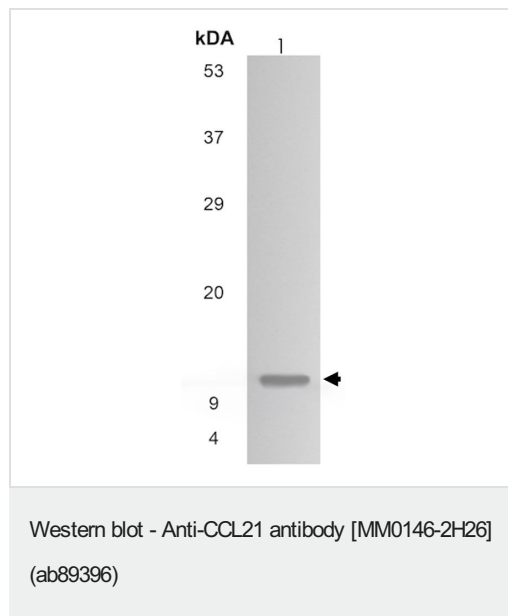
Sequence similarities

Belongs to the intercrine beta (chemokine CC) family.

Cellular localization

Secreted.

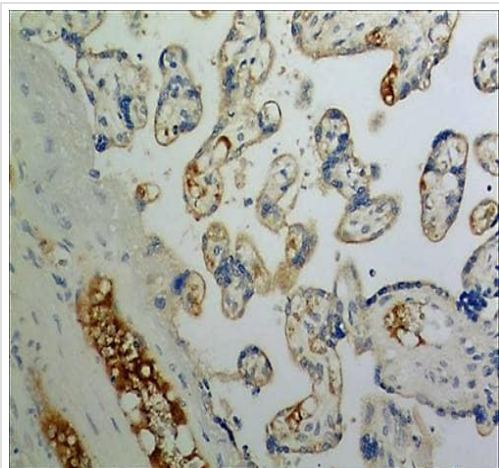
Images



Anti-CCL21 antibody [MM0146-2H26] (ab89396) at 1/500 dilution
+ Human placenta tissue lysate

Predicted band size: 15 kDa

Observed band size: 12 kDa



Immunohistochemistry (Formalin/PFA-fixed paraffin-embedded sections) - Anti-CCL21 antibody [MMO146-2H26] (ab89396)

Immunohistochemistry (Formalin/PFA-fixed paraffin-embedded sections) analysis of human placental tissue section (4µm) labelling CCL21 with ab89396. Tissue was treated with 15µg/ml Proteinase K for antigen retrieval and fixed with 4% PFA. A HRP-conjugated anti-mouse IgG was used as the secondary antibody (30 minutes at room temperature) followed by DAB color development.

Please note: All products are "FOR RESEARCH USE ONLY. NOT FOR USE IN DIAGNOSTIC PROCEDURES"

Our Abpromise to you: Quality guaranteed and expert technical support

- Replacement or refund for products not performing as stated on the datasheet
- Valid for 12 months from date of delivery
- Response to your inquiry within 24 hours
- We provide support in Chinese, English, French, German, Japanese and Spanish
- Extensive multi-media technical resources to help you
- We investigate all quality concerns to ensure our products perform to the highest standards

If the product does not perform as described on this datasheet, we will offer a refund or replacement. For full details of the Abpromise, please visit <https://www.abcam.com/abpromise> or contact our technical team.

Terms and conditions

- Guarantee only valid for products bought direct from Abcam or one of our authorized distributors