

Product datasheet

Anti-CCL27 antibody [EPR17284-217] ab181323

Recombinant RabMAb

3 Images

Overview

Product name	Anti-CCL27 antibody [EPR17284-217]
Description	Rabbit monoclonal [EPR17284-217] to CCL27
Host species	Rabbit
Tested applications	Suitable for: WB, IP
Species reactivity	Reacts with: Mouse
Immunogen	Recombinant full length protein. This information is proprietary to Abcam and/or its suppliers.
Positive control	WB: Mouse skin lysate. IP: Mouse skin lysate.
General notes	<p>This product is a recombinant monoclonal antibody, which offers several advantages including:</p> <ul style="list-style-type: none"> - High batch-to-batch consistency and reproducibility - Improved sensitivity and specificity - Long-term security of supply - Animal-free production <p>For more information see here.</p> <p>Our RabMAb® technology is a patented hybridoma-based technology for making rabbit monoclonal antibodies. For details on our patents, please refer to RabMAb® patents.</p>

Properties

Form	Liquid
Storage instructions	Shipped at 4°C. Store at +4°C short term (1-2 weeks). Upon delivery aliquot. Store at -20°C long term. Avoid freeze / thaw cycle.
Storage buffer	Preservative: 0.01% Sodium azide Constituents: PBS, 40% Glycerol (glycerin, glycerine), 0.05% BSA
Purity	Protein A purified
Clonality	Monoclonal
Clone number	EPR17284-217
Isotype	IgG

Applications

Applications

The Abpromise guarantee

Our **Abpromise guarantee** covers the use of ab181323 in the following tested applications.

The application notes include recommended starting dilutions; optimal dilutions/concentrations should be determined by the end user.

Application	Abreviews	Notes
WB		1/1000. Detects a band of approximately 13 kDa (predicted molecular weight: 13 kDa).
IP		1/30.

Target

Function

Chemotactic factor that attracts skin-associated memory T-lymphocytes. May play a role in mediating homing of lymphocytes to cutaneous sites. Binds to CCR10.

Tissue specificity

Testis, thymus, placenta, ovary and skin.

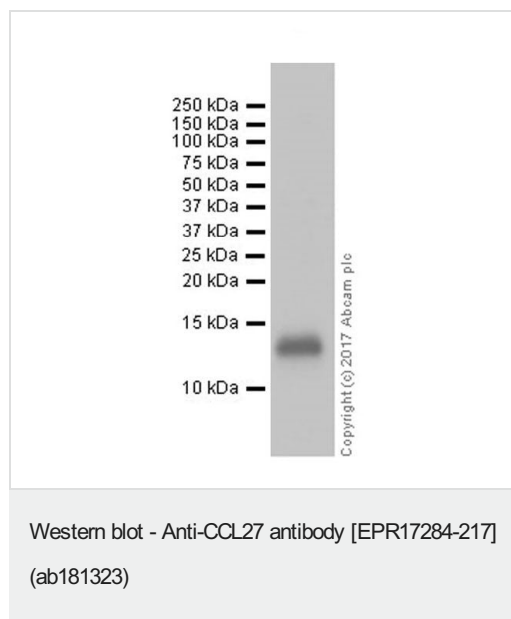
Sequence similarities

Belongs to the intercrine beta (chemokine CC) family.

Cellular localization

Secreted.

Images



Anti-CCL27 antibody [EPR17284-217] (ab181323) at 1/1000 dilution + Mouse skin lysate at 20 µg

Secondary

Goat Anti-Rabbit IgG H&L (HRP) ([ab97051](#)) at 1/20000 dilution

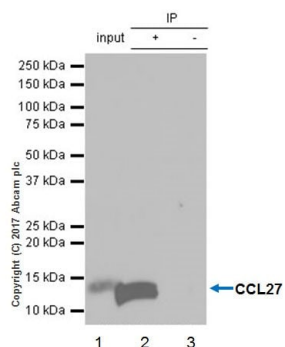
Developed using the ECL technique.

Predicted band size: 13 kDa

Observed band size: 13 kDa

Exposure time: 5 seconds

Blocking/Dilution buffer: 5% NFDM/TBST.



Immunoprecipitation - Anti-CCL27 antibody
[EPR17284-217] (ab181323)

CCL27 was immunoprecipitated from 0.35 mg of mouse skin lysate with ab181323 at 1/30 dilution. Western blot was performed from the immunoprecipitate using ab181323 at 1/1000 dilution. VeriBlot for IP Detection Reagent (HRP) ([ab131366](#)), was used for detection at 1/10000 dilution.

Lane 1: Mouse skin lysate 10 µg (Input).

Lane 2: ab181323 IP in mouse skin lysate (+).

Lane 3: Rabbit monoclonal IgG ([ab172730](#)) instead of ab181323 in mouse skin lysate (-).

Blocking and dilution buffer and concentration: 5% NFDm/TBST.

Exposure time: 3 minutes.

Why choose a recombinant antibody?



Research with confidence
Consistent and reproducible results



Long-term and scalable supply
Recombinant technology



Success from the first experiment
Confirmed specificity



Ethical standards compliant
Animal-free production

Anti-CCL27 antibody [EPR17284-217] (ab181323)

Please note: All products are "FOR RESEARCH USE ONLY. NOT FOR USE IN DIAGNOSTIC PROCEDURES"

Our Abpromise to you: Quality guaranteed and expert technical support

- Replacement or refund for products not performing as stated on the datasheet
- Valid for 12 months from date of delivery
- Response to your inquiry within 24 hours
- We provide support in Chinese, English, French, German, Japanese and Spanish
- Extensive multi-media technical resources to help you

- We investigate all quality concerns to ensure our products perform to the highest standards

If the product does not perform as described on this datasheet, we will offer a refund or replacement. For full details of the Abpromise, please visit <https://www.abcam.com/abpromise> or contact our technical team.

Terms and conditions

- Guarantee only valid for products bought direct from Abcam or one of our authorized distributors