




Product datasheet

Anti-CCL4/MIP-1 beta antibody ab106548

1 Image

Overview

Product name	Anti-CCL4/MIP-1 beta antibody
Description	Rabbit polyclonal to CCL4/MIP-1 beta
Host species	Rabbit
Tested applications	Suitable for: WB
Species reactivity	Reacts with: Pig Predicted to work with: Rat, Rabbit, Horse, Cow, Cat, Dog, Chimpanzee, Macaque monkey, Opossum 
Immunogen	Recombinant full length protein corresponding to Pig CCL4/MIP-1 beta aa 1 to the C-terminus. Mature full length chain without signal peptide. Database link: Q711P4 <div>  Run BLAST with  Run BLAST with </div>
Positive control	Recombinant Pig CCL4/MIP-1 beta.
General notes	<p>The Life Science industry has been in the grips of a reproducibility crisis for a number of years. Abcam is leading the way in addressing this with our range of recombinant monoclonal antibodies and knockout edited cell lines for gold-standard validation. Please check that this product meets your needs before purchasing.</p> <p>If you have any questions, special requirements or concerns, please send us an inquiry and/or contact our Support team ahead of purchase. Recommended alternatives for this product can be found below, along with publications, customer reviews and Q&As</p>

Properties

Form	Liquid
Storage instructions	Shipped at 4°C. Upon delivery aliquot. Store at -20°C or -80°C. Avoid freeze / thaw cycle.
Storage buffer	Preservative: 0.01% Sodium azide Constituents: 0.42% Potassium phosphate, 0.88% Sodium chloride
Purity	Protein A purified
Purification notes	ab106548 was Protein A purified from monospecific antiserum by chromatography
Clonality	Polyclonal
Isotype	IgG

Applications

The Abpromise guarantee

Our **Abpromise guarantee** covers the use of ab106548 in the following tested applications.

The application notes include recommended starting dilutions; optimal dilutions/concentrations should be determined by the end user.

Application	Abreviews	Notes
WB		1/500. Predicted molecular weight: 10 kDa.

Target

Function

Monokine with inflammatory and chemokinetic properties. Binds to CCR5. One of the major HIV-suppressive factors produced by CD8+ T-cells. Recombinant MIP-1-beta induces a dose-dependent inhibition of different strains of HIV-1, HIV-2, and simian immunodeficiency virus (SIV). The processed form MIP-1-beta(3-69) retains the abilities to induce down-modulation of surface expression of the chemokine receptor CCR5 and to inhibit the CCR5-mediated entry of HIV-1 in T-cells. MIP-1-beta(3-69) is also a ligand for CCR1 and CCR2 isoform B.

Sequence similarities

Belongs to the intercrine beta (chemokine CC) family.

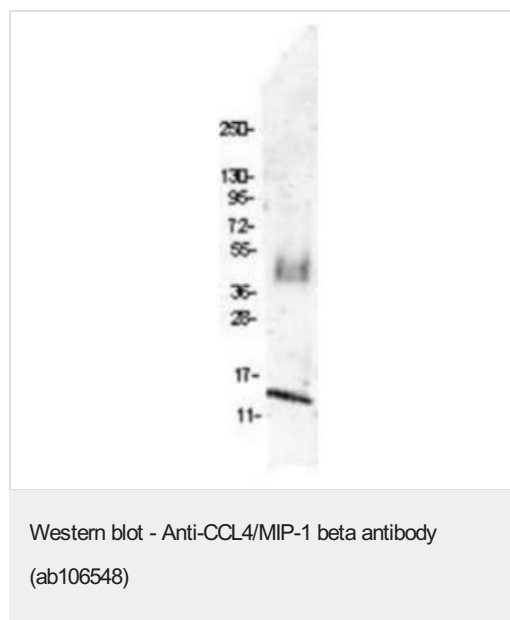
Post-translational modifications

N-terminal processed form MIP-1-beta(3-69) is produced by proteolytic cleavage after secretion from peripheral blood lymphocytes.

Cellular localization

Secreted.

Images



Anti-CCL4/MIP-1 beta antibody (ab106548) at 4 µg/ml +
Recombinant Pig CCL4/MIP-1 beta.

Secondary

IRDye800™ Conjugated Goat Anti-Rabbit IgG at 1/20000 dilution

Predicted band size: 10 kDa

Please note: All products are "FOR RESEARCH USE ONLY. NOT FOR USE IN DIAGNOSTIC PROCEDURES"

Our Abpromise to you: Quality guaranteed and expert technical support

- Replacement or refund for products not performing as stated on the datasheet

- Valid for 12 months from date of delivery
- Response to your inquiry within 24 hours
- We provide support in Chinese, English, French, German, Japanese and Spanish
- Extensive multi-media technical resources to help you
- We investigate all quality concerns to ensure our products perform to the highest standards

If the product does not perform as described on this datasheet, we will offer a refund or replacement. For full details of the Abpromise, please visit <https://www.abcam.com/abpromise> or contact our technical team.

Terms and conditions

- Guarantee only valid for products bought direct from Abcam or one of our authorized distributors