


### Anti-CCT6A antibody ab110905

[2 References](#) [2 Images](#)

#### Overview

<b>Product name</b>	Anti-CCT6A antibody
<b>Description</b>	Rabbit polyclonal to CCT6A
<b>Host species</b>	Rabbit
<b>Tested applications</b>	<b>Suitable for:</b> WB, IHC-P
<b>Species reactivity</b>	<b>Reacts with:</b> Human <b>Predicted to work with:</b> Mouse, Rat 
<b>Immunogen</b>	Synthetic peptide derived from an internal sequence of Human CCT6A.
<b>General notes</b>	<p>The Life Science industry has been in the grips of a reproducibility crisis for a number of years. Abcam is leading the way in addressing this with our range of recombinant monoclonal antibodies and knockout edited cell lines for gold-standard validation. Please check that this product meets your needs before purchasing.</p> <p>If you have any questions, special requirements or concerns, please send us an inquiry and/or contact our Support team ahead of purchase. Recommended alternatives for this product can be found below, along with publications, customer reviews and Q&amp;As</p>

#### Properties

<b>Form</b>	Liquid
<b>Storage instructions</b>	Shipped at 4°C. Store at -20°C. Stable for 12 months at -20°C.
<b>Storage buffer</b>	<p>pH: 7.40</p> <p>Preservative: 0.02% Sodium azide</p> <p>Constituents: 49.1% PBS, 0.88% Sodium chloride, 50% Glycerol (glycerin, glycerine)</p> <p>PBS (without Mg<sup>2+</sup> and Ca<sup>2+</sup>)</p>
<b>Purity</b>	Immunogen affinity purified
<b>Purification notes</b>	ab110905 was affinity purified from rabbit antiserum by affinity chromatography using epitope specific immunogen.
<b>Clonality</b>	Polyclonal
<b>Isotype</b>	IgG

## Applications

### The Abpromise guarantee

Our **Abpromise guarantee** covers the use of ab110905 in the following tested applications.

The application notes include recommended starting dilutions; optimal dilutions/concentrations should be determined by the end user.

Application	Abreviews	Notes
WB		1/500 - 1/1000. Predicted molecular weight: 58 kDa.
IHC-P		1/50 - 1/100. Perform heat mediated antigen retrieval with citrate buffer pH 6 before commencing with IHC staining protocol.

## Target

### Function

Molecular chaperone; assists the folding of proteins upon ATP hydrolysis. Known to play a role, in vitro, in the folding of actin and tubulin.

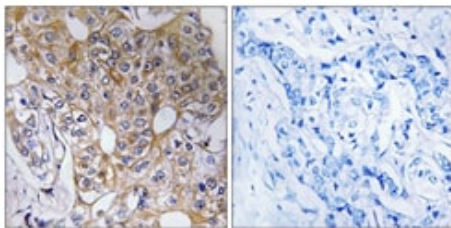
### Sequence similarities

Belongs to the TCP-1 chaperonin family.

### Cellular localization

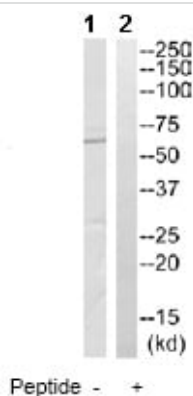
Cytoplasm.

## Images



Immunohistochemistry (Formalin/PFA-fixed paraffin-embedded sections) - Anti-CCT6A antibody (ab110905)

ab110905, at a 1/50 dilution, staining CCT6A in paraffin embedded Human breast carcinoma tissue by Immunohistochemistry. The image on the right is from tissue treated with the synthesized peptide.



Western blot - Anti-CCT6A antibody (ab110905)

**All lanes :** Anti-CCT6A antibody (ab110905) at 1/500 dilution

**Lane 1 :** HepG2 cell extracts

**Lane 2 :** HepG2 cell extracts with immunizing peptide at 10 µg

Lysates/proteins at 30 µg per lane.

**Predicted band size:** 58 kDa

**Please note:** All products are "FOR RESEARCH USE ONLY. NOT FOR USE IN DIAGNOSTIC PROCEDURES"

### **Our Abpromise to you: Quality guaranteed and expert technical support**

---

- Replacement or refund for products not performing as stated on the datasheet
- Valid for 12 months from date of delivery
- Response to your inquiry within 24 hours
  
- We provide support in Chinese, English, French, German, Japanese and Spanish
- Extensive multi-media technical resources to help you
- We investigate all quality concerns to ensure our products perform to the highest standards

If the product does not perform as described on this datasheet, we will offer a refund or replacement. For full details of the Abpromise, please visit <https://www.abcam.com/abpromise> or contact our technical team.

### **Terms and conditions**

---

- Guarantee only valid for products bought direct from Abcam or one of our authorized distributors