




## Product datasheet

# Anti-CD10 antibody [ABM4A52] ab210932

[1 References](#) [2 Images](#)

### Overview

<b>Product name</b>	Anti-CD10 antibody [ABM4A52]
<b>Description</b>	Mouse monoclonal [ABM4A52] to CD10
<b>Host species</b>	Mouse
<b>Tested applications</b>	<b>Suitable for:</b> IHC-P, WB
<b>Species reactivity</b>	<b>Reacts with:</b> Human <b>Predicted to work with:</b> Mouse, Rat, Rabbit, Orangutan 
<b>Immunogen</b>	Recombinant fragment corresponding to Human CD10 aa 250-500. Database link: <a href="#">P08473</a> <div>  <a href="#">Run BLAST with</a>  <a href="#">Run BLAST with</a> </div>
<b>Positive control</b>	Jurkat and Ramos cell lysates. Human renal cell carcinoma tissue.
<b>General notes</b>	<p>The Life Science industry has been in the grips of a reproducibility crisis for a number of years. Abcam is leading the way in addressing this with our range of recombinant monoclonal antibodies and knockout edited cell lines for gold-standard validation. Please check that this product meets your needs before purchasing.</p> <p>If you have any questions, special requirements or concerns, please send us an inquiry and/or contact our Support team ahead of purchase. Recommended alternatives for this product can be found below, along with publications, customer reviews and Q&amp;As</p>

### Properties

<b>Form</b>	Liquid
<b>Storage instructions</b>	Shipped at 4°C. Store at +4°C short term (1-2 weeks). Upon delivery aliquot. Store at -20°C long term. Avoid freeze / thaw cycle.
<b>Storage buffer</b>	Preservative: 0.05% Sodium azide Constituents: 99% PBS, 0.05% BSA
<b>Purity</b>	Protein G purified
<b>Clonality</b>	Monoclonal
<b>Clone number</b>	ABM4A52
<b>Isotype</b>	IgG2b
<b>Light chain type</b>	kappa

## Applications

### The Abpromise guarantee

Our **Abpromise guarantee** covers the use of ab210932 in the following tested applications.

The application notes include recommended starting dilutions; optimal dilutions/concentrations should be determined by the end user.

Application	Abreviews	Notes
IHC-P		Use a concentration of 5 µg/ml.
WB		Use a concentration of 0.5 µg/ml. Predicted molecular weight: 86 kDa.

## Target

### Function

Thermolysin-like specificity, but is almost confined on acting on polypeptides of up to 30 amino acids. Biologically important in the destruction of opioid peptides such as Met- and Leu-enkephalins by cleavage of a Gly-Phe bond. Able to cleave angiotensin-1, angiotensin-2 and angiotensin 1-9. Involved in the degradation of atrial natriuretic factor (ANF). Displays UV-inducible elastase activity toward skin preelastic and elastic fibers.

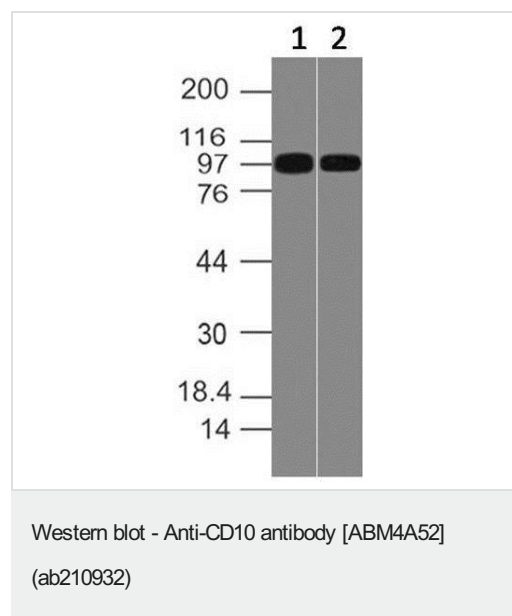
### Sequence similarities

Belongs to the peptidase M13 family.

### Cellular localization

Cell membrane.

## Images

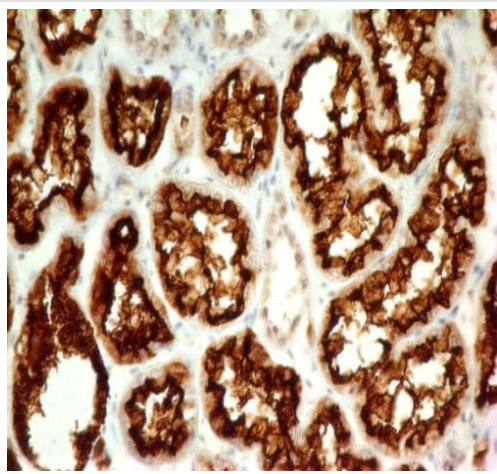


**All lanes :** Anti-CD10 antibody [ABM4A52] (ab210932) at 0.5 µg/ml

**Lane 1 :** Jurkat cell lysate

**Lane 2 :** Ramos cell lysate

**Predicted band size:** 86 kDa



Immunohistochemical analysis of paraffin-embedded human renal cell carcinoma tissue, labeling CD10 using ab210932 at 5 µg/mL.

Immunohistochemistry (Formalin/PFA-fixed paraffin-embedded sections) - Anti-CD10 antibody  
[ABM4A52] (ab210932)

**Please note:** All products are "FOR RESEARCH USE ONLY. NOT FOR USE IN DIAGNOSTIC PROCEDURES"

### Our Abpromise to you: Quality guaranteed and expert technical support

---

- Replacement or refund for products not performing as stated on the datasheet
- Valid for 12 months from date of delivery
- Response to your inquiry within 24 hours
- We provide support in Chinese, English, French, German, Japanese and Spanish
- Extensive multi-media technical resources to help you
- We investigate all quality concerns to ensure our products perform to the highest standards

If the product does not perform as described on this datasheet, we will offer a refund or replacement. For full details of the Abpromise, please visit <https://www.abcam.com/abpromise> or contact our technical team.

### Terms and conditions

---

- Guarantee only valid for products bought direct from Abcam or one of our authorized distributors