

## Product datasheet

### Anti-CD105 antibody [105C02] ab44967

KO VALIDATED

★★★★★ 2 Abreviews 12 References 1 Image

#### Overview

Product name	Anti-CD105 antibody [105C02]
Description	Mouse monoclonal [105C02] to CD105
Host species	Mouse
Tested applications	<b>Suitable for:</b> WB
Species reactivity	<b>Reacts with:</b> Human
Immunogen	Full length protein corresponding to CD105. Purified GP160 from cell membrane glycoproteins of fresh non-T/non-B acute lymphoblastic leukemia cells.
General notes	<p>The Life Science industry has been in the grips of a reproducibility crisis for a number of years. Abcam is leading the way in addressing this with our range of recombinant monoclonal antibodies and knockout edited cell lines for gold-standard validation. Please check that this product meets your needs before purchasing.</p> <p>If you have any questions, special requirements or concerns, please send us an inquiry and/or contact our Support team ahead of purchase. Recommended alternatives for this product can be found below, along with publications, customer reviews and Q&amp;As</p>

#### Properties

Form	Liquid
Storage instructions	Shipped at 4°C. Store at +4°C short term (1-2 weeks). Store at -20°C or -80°C. Avoid freeze / thaw cycle.
Storage buffer	pH: 7.40 Preservative: 0.1% Sodium azide Constituent: PBS
Purity	Protein G purified
Clonality	Monoclonal
Clone number	105C02
Isotype	IgG1

## Applications

### The Abpromise guarantee

Our **Abpromise guarantee** covers the use of ab44967 in the following tested applications.

The application notes include recommended starting dilutions; optimal dilutions/concentrations should be determined by the end user.

Application	Abreviews	Notes
WB		1/1000. Detects a band of approximately 95 kDa.

## Target

### Function

Major glycoprotein of vascular endothelium. May play a critical role in the binding of endothelial cells to integrins and/or other RGD receptors.

### Tissue specificity

Endoglin is restricted to endothelial cells in all tissues except bone marrow.

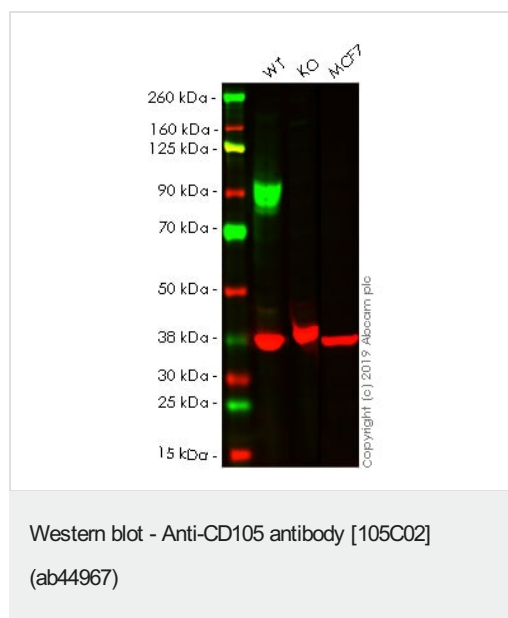
### Involvement in disease

Defects in ENG are the cause of hereditary hemorrhagic telangiectasia type 1 (HHT1) [MIM:187300, 108010]; also known as Osler-Rendu-Weber syndrome 1 (ORW1). HHT1 is an autosomal dominant multisystemic vascular dysplasia, characterized by recurrent epistaxis, muco-cutaneous telangiectases, gastro-intestinal hemorrhage, and pulmonary (PAVM), cerebral (CAVM) and hepatic arteriovenous malformations; all secondary manifestations of the underlying vascular dysplasia. Although the first symptom of HHT1 in children is generally nose bleed, there is an important clinical heterogeneity.

### Cellular localization

Membrane.

## Images



**All lanes** : Anti-CD105 antibody [105C02] (ab44967) at 1/1000 dilution

**Lane 1** : Wild-type HeLa whole cell lysate

**Lane 2** : CD105 knockout HeLa whole cell lysate

**Lane 3** : MCF7 whole cell lysate

Lysates/proteins at 20 µg per lane.

**Observed band size:** 95 kDa

Lanes 1 - 3: Merged signal (red and green). Green - ab44967 observed at 95 kDa. Red - loading control, **ab181602**, observed at 37 kDa.

ab44967 was shown to specifically react with CD105 in wild-type HeLa cells as signal was lost in CD105 knockout cells. Wild-type and CD105 knockout samples were subjected to SDS-PAGE. ab44967 and **ab181602** (Rabbit anti GAPDH loading control) were

incubated overnight at 4°C at 1/1000 dilution and 1/20000 dilution respectively. Blots were developed with Goat anti-Mouse IgG H&L (IRDye® 800CW) preabsorbed **ab216772** and Goat anti-Rabbit IgG H&L (IRDye® 680RD) preabsorbed **ab216777** secondary antibodies at 1/20000 dilution for 1 hour at room temperature before imaging.

**Please note:** All products are "FOR RESEARCH USE ONLY. NOT FOR USE IN DIAGNOSTIC PROCEDURES"

### **Our Abpromise to you: Quality guaranteed and expert technical support**

---

- Replacement or refund for products not performing as stated on the datasheet
- Valid for 12 months from date of delivery
- Response to your inquiry within 24 hours
- We provide support in Chinese, English, French, German, Japanese and Spanish
- Extensive multi-media technical resources to help you
- We investigate all quality concerns to ensure our products perform to the highest standards

If the product does not perform as described on this datasheet, we will offer a refund or replacement. For full details of the Abpromise, please visit <https://www.abcam.com/abpromise> or contact our technical team.

### **Terms and conditions**

---

- Guarantee only valid for products bought direct from Abcam or one of our authorized distributors