

Product datasheet

Anti-CD11a antibody [I21/7] ab25383

Recombinant

[1 References](#) [2 Images](#)

Overview

Product name	Anti-CD11a antibody [I21/7]
Description	Rat monoclonal [I21/7] to CD11a
Host species	Rat
Tested applications	Suitable for: Flow Cyt Unsuitable for: IP
Species reactivity	Reacts with: Mouse
Immunogen	Tissue, cells or virus. This information is proprietary to Abcam and/or its suppliers.
Positive control	Flow Cyt: Mouse splenocytes.
General notes	<p>This antibody clone is manufactured by Abcam. If you require a custom buffer formulation or conjugation for your experiments, please contact orders@abcam.com.</p> <p>This product is a recombinant monoclonal antibody, which offers several advantages including:</p> <ul style="list-style-type: none">- High batch-to-batch consistency and reproducibility- Improved sensitivity and specificity- Long-term security of supply- Animal-free production <p>For more information see here.</p>

Properties

Form	Liquid
Storage instructions	Shipped at 4°C. Store at +4°C short term (1-2 weeks). Upon delivery aliquot. Store at -20°C long term. Avoid freeze / thaw cycle.
Storage buffer	pH: 7.2 Preservative: 0.01% Sodium azide Constituents: PBS, 0.05% BSA, 40% Glycerol (glycerin, glycerine)
Purity	Ion Exchange Chromatography
Clonality	Monoclonal
Clone number	I21/7
Isotype	IgG2a

Light chain type

kappa

Applications

The Abpromise guarantee

Our **Abpromise guarantee** covers the use of ab25383 in the following tested applications.

The application notes include recommended starting dilutions; optimal dilutions/concentrations should be determined by the end user.

Application	Abreviews	Notes
Flow Cyt		Use a concentration of 0.963 µg/ml.

Application notes

Is unsuitable for IP.

Target

Function

Integrin alpha-L/beta-2 is a receptor for ICAM1, ICAM2, ICAM3 and ICAM4. It is involved in a variety of immune phenomena including leukocyte-endothelial cell interaction, cytotoxic T-cell mediated killing, and antibody dependent killing by granulocytes and monocytes.

Tissue specificity

Leukocytes.

Sequence similarities

Belongs to the integrin alpha chain family.
Contains 7 FG-GAP repeats.
Contains 1 VWFA domain.

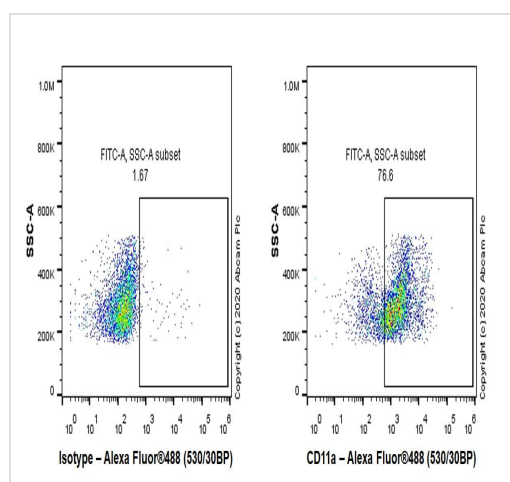
Domain

The integrin I-domain (insert) is a VWFA domain. Integrins with I-domains do not undergo protease cleavage.

Cellular localization

Membrane.

Images



Flow cytometric analysis of mouse splenocyte cells labelling CD11a with ab25383 at 0.963µg/ml (Right panel) compared with a rat monoclonal IgG isotype(Left panel). Goat F(ab)2 Anti-Rat IgG Fc (Alexa Fluor® 488, **ab150161**) at 1/2000 dilution was used as the secondary antibody. Gated on viable cells.

Flow Cytometry - Anti-CD11a antibody [I21/7]

(ab25383)

Why choose a recombinant antibody?

Research with confidence
Consistent and reproducible results

Long-term and scalable supply
Recombinant technology

Success from the first experiment
Confirmed specificity

Ethical standards compliant
Animal-free production

Anti-CD11a antibody [I21/7] (ab25383)

Please note: All products are "FOR RESEARCH USE ONLY. NOT FOR USE IN DIAGNOSTIC PROCEDURES"

Our Abpromise to you: Quality guaranteed and expert technical support

- Replacement or refund for products not performing as stated on the datasheet
- Valid for 12 months from date of delivery
- Response to your inquiry within 24 hours
- We provide support in Chinese, English, French, German, Japanese and Spanish
- Extensive multi-media technical resources to help you
- We investigate all quality concerns to ensure our products perform to the highest standards

If the product does not perform as described on this datasheet, we will offer a refund or replacement. For full details of the Abpromise, please visit <https://www.abcam.com/abpromise> or contact our technical team.

Terms and conditions

- Guarantee only valid for products bought direct from Abcam or one of our authorized distributors