


## Product datasheet

### Anti-CD13 antibody [SP182] ab183358

Recombinant RabMAb

★★★★★ [2 Abreviews](#) [1 References](#) [13 Images](#)

#### Overview

Product name	Anti-CD13 antibody [SP182]
Description	Rabbit monoclonal [SP182] to CD13
Host species	Rabbit
Tested applications	<b>Suitable for:</b> IHC-P <b>Unsuitable for:</b> Flow Cyt
Species reactivity	<b>Reacts with:</b> Human <b>Predicted to work with:</b> Rabbit, Pig 
Immunogen	Synthetic peptide. This information is proprietary to Abcam and/or its suppliers.
Positive control	IHC-P: Human kidney, tonsil, hepatoma, thymus, lung, liver, placenta, bladder, bladder TCC, cerebellum, and cervix tissue.
General notes	<p>This product is a recombinant monoclonal antibody, which offers several advantages including:</p> <ul style="list-style-type: none"> <li>- High batch-to-batch consistency and reproducibility</li> <li>- Improved sensitivity and specificity</li> <li>- Long-term security of supply</li> <li>- Animal-free production</li> </ul> <p>For more information <a href="#">see here</a>.</p> <p><b>This product is FOR RESEARCH USE ONLY. For commercial use, please contact <a href="mailto:partnerships@abcam.com">partnerships@abcam.com</a>.</b></p>

#### Properties

Form	Liquid
Storage instructions	Shipped at 4°C. Store at +4°C short term (1-2 weeks). Upon delivery aliquot. Store at -20°C long term. Avoid freeze / thaw cycle.
Storage buffer	pH: 7.60 Preservative: 0.1% Sodium azide Constituents: PBS, 1% BSA
Purity	Protein A/G purified
Purification notes	Purified from TCS by protein A/G.

<b>Clonality</b>	Monoclonal
<b>Clone number</b>	SP182
<b>Isotype</b>	IgG

## Applications

**The Abpromise guarantee** Our **Abpromise guarantee** covers the use of ab183358 in the following tested applications. The application notes include recommended starting dilutions; optimal dilutions/concentrations should be determined by the end user.

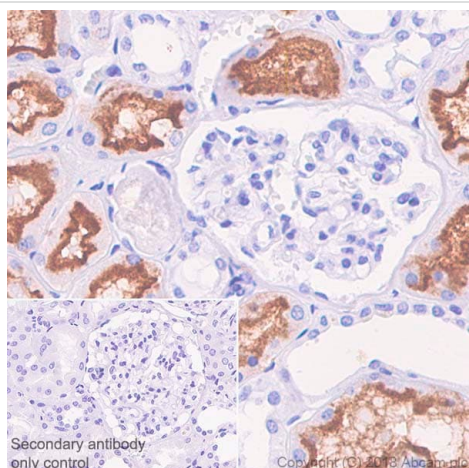
Application	Abreviews	Notes
IHC-P		1/100. Antigen Retrieval: Boil tissue section in EDTA buffer, pH 8.0 for 10 min followed by cooling at room temperature for 20 min.

**Application notes** Is unsuitable for Flow Cyt.

## Target

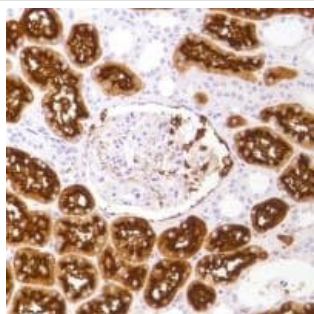
<b>Function</b>	Broad specificity aminopeptidase. Plays a role in the final digestion of peptides generated from hydrolysis of proteins by gastric and pancreatic proteases. May play a critical role in the pathogenesis of cholesterol gallstone disease. May be involved in the metabolism of regulatory peptides of diverse cell types including small intestinal and tubular epithelial cells, macrophages, granulocytes and synaptic membranes from the CNS. Found to cleave antigen peptides bound to major histocompatibility complex class II molecules of presenting cells and to degrade neurotransmitters at synaptic junctions. Is also implicated as a regulator of IL-8 bioavailability in the endometrium, and therefore may contribute to the regulation of angiogenesis. Is used as a marker for acute myeloid leukemia and plays a role in tumor invasion. In case of human coronavirus 229E (HCoV-229E) infection, serves as receptor for HCoV-229E spike glycoprotein. Mediates as well human cytomegalovirus (HCMV) infection.
<b>Tissue specificity</b>	Expressed in epithelial cells of the kidney, intestine, and respiratory tract; granulocytes, monocytes, fibroblasts, endothelial cells, cerebral pericytes at the blood-brain barrier, synaptic membranes of cells in the CNS. Also expressed in endometrial stromal cells, but not in the endometrial glandular cells. Found in the vasculature of tissues that undergo angiogenesis and in malignant gliomas and lymph node metastases from multiple tumor types but not in blood vessels of normal tissues. A soluble form has been found in plasma. It is found to be elevated in plasma and effusions of cancer patients.
<b>Sequence similarities</b>	Belongs to the peptidase M1 family.
<b>Domain</b>	Amino acids 260-353 are essential to mediate susceptibility to infection with HCoV-229E (in porcine/human chimeric studies) and more specifically amino acids 288-295 (mutagenesis studies).
<b>Post-translational modifications</b>	Sulfated. N- and O-glycosylated. May undergo proteolysis and give rise to a soluble form.
<b>Cellular localization</b>	Cell membrane. Cytoplasm > cytosol. A soluble form has also been detected.

## Images



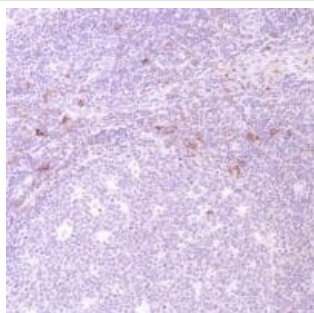
Immunohistochemistry (Formalin/PFA-fixed paraffin-embedded sections) - Anti-CD13 antibody [SP182] (ab183358)

Immunohistochemistry (Formalin/PFA-fixed paraffin-embedded sections) analysis of Human kidney tissue sections labeling CD13 with ab183358 at 1/100 dilution (1.29 µg/ml). Heat mediated antigen retrieval was performed with Tris-EDTA buffer (pH 9.0, epitope retrieval solution 2) for 10 mins. Rabbit specific IHC polymer detection kit HRP/DAB (**ab209101**) was used as the secondary antibody. Negative control: PBS instead of the primary antibody. Hematoxylin was used as a counterstain.



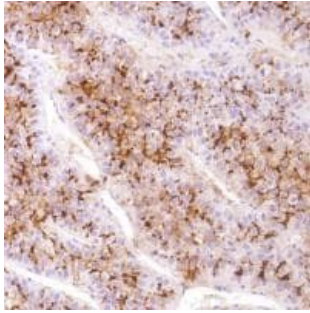
Immunohistochemistry (Formalin/PFA-fixed paraffin-embedded sections) - Anti-CD13 antibody [SP182] (ab183358)

Immunohistochemical analysis of formalin fixed, paraffin embedded human kidney tissue sections labeling CD13 using ab183358 at a 1/100 dilution.



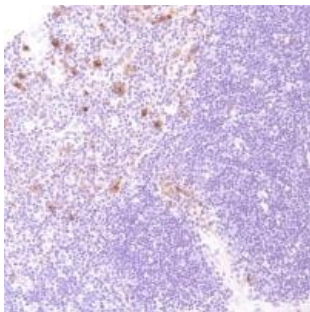
Immunohistochemistry (Formalin/PFA-fixed paraffin-embedded sections) - Anti-CD13 antibody [SP182] (ab183358)

Immunohistochemical analysis of formalin fixed, paraffin embedded human tonsil tissue sections labeling CD13 using ab183358 at a 1/100 dilution.



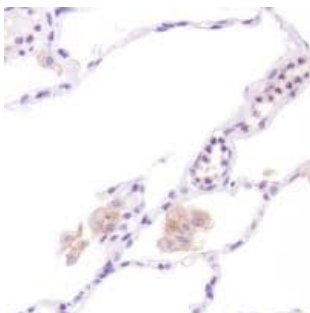
Immunohistochemical analysis of formalin fixed, paraffin embedded Human hepatoma tissue sections labeling CD13 using ab183358 at a 1/100 dilution.

Immunohistochemistry (Formalin/PFA-fixed paraffin-embedded sections) - Anti-CD13 antibody [SP182] (ab183358)



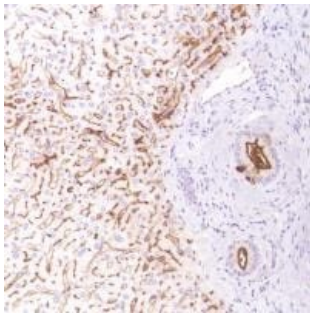
Immunohistochemical analysis of formalin fixed, paraffin embedded human thymus tissue sections labeling CD13 using ab183358 at a 1/100 dilution.

Immunohistochemistry (Formalin/PFA-fixed paraffin-embedded sections) - Anti-CD13 antibody [SP182] (ab183358)



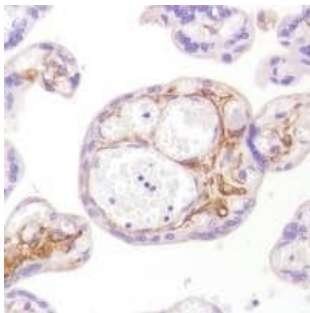
Immunohistochemical analysis of formalin fixed, paraffin embedded human lung tissue sections labeling CD13 using ab183358 at a 1/100 dilution.

Immunohistochemistry (Formalin/PFA-fixed paraffin-embedded sections) - Anti-CD13 antibody [SP182] (ab183358)



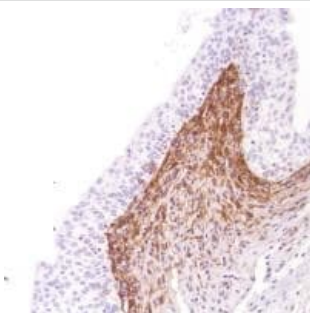
Immunohistochemistry (Formalin/PFA-fixed paraffin-embedded sections) - Anti-CD13 antibody [SP182] (ab183358)

Immunohistochemical analysis of formalin fixed, paraffin embedded human liver tissue sections labeling CD13 using ab183358 at a 1/100 dilution.



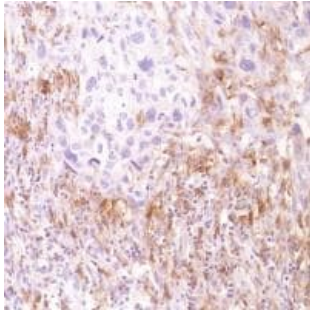
Immunohistochemistry (Formalin/PFA-fixed paraffin-embedded sections) - Anti-CD13 antibody [SP182] (ab183358)

Immunohistochemical analysis of formalin fixed, paraffin embedded human placenta tissue sections labeling CD13 using ab183358 at a 1/100 dilution.



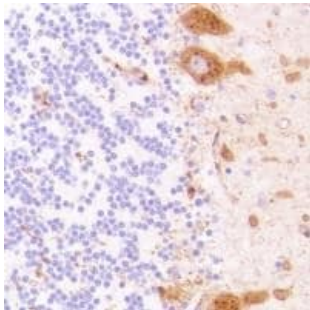
Immunohistochemistry (Formalin/PFA-fixed paraffin-embedded sections) - Anti-CD13 antibody [SP182] (ab183358)

Immunohistochemical analysis of formalin fixed, paraffin embedded human bladder tissue sections labeling CD13 using ab183358 at a 1/100 dilution.



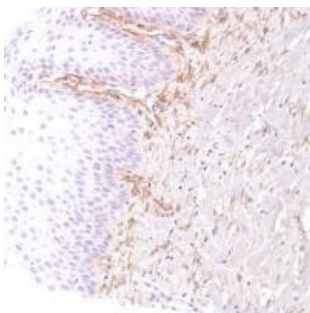
Immunohistochemistry (Formalin/PFA-fixed paraffin-embedded sections) - Anti-CD13 antibody [SP182] (ab183358)

Immunohistochemical analysis of formalin fixed, paraffin embedded human bladder TCC tissue sections labeling CD13 using ab183358 at a 1/100 dilution.



Immunohistochemistry (Formalin/PFA-fixed paraffin-embedded sections) - Anti-CD13 antibody [SP182] (ab183358)

Immunohistochemical analysis of formalin fixed, paraffin embedded human cerebellum tissue sections labeling CD13 using ab183358 at a 1/100 dilution.



Immunohistochemistry (Formalin/PFA-fixed paraffin-embedded sections) - Anti-CD13 antibody [SP182] (ab183358)

Immunohistochemical analysis of formalin fixed, paraffin embedded human cervix tissue sections labeling CD13 using ab183358 at a 1/100 dilution.

### Why choose a recombinant antibody?



**Research with confidence**  
Consistent and reproducible results



**Long-term and scalable supply**  
Recombinant technology



**Success from the first experiment**  
Confirmed specificity



**Ethical standards compliant**  
Animal-free production

Anti-CD13 antibody [SP182] (ab183358)

**Please note:** All products are "FOR RESEARCH USE ONLY. NOT FOR USE IN DIAGNOSTIC PROCEDURES"

### Our Abpromise to you: Quality guaranteed and expert technical support

---

- Replacement or refund for products not performing as stated on the datasheet
- Valid for 12 months from date of delivery
- Response to your inquiry within 24 hours
- We provide support in Chinese, English, French, German, Japanese and Spanish
- Extensive multi-media technical resources to help you
- We investigate all quality concerns to ensure our products perform to the highest standards

If the product does not perform as described on this datasheet, we will offer a refund or replacement. For full details of the Abpromise, please visit <https://www.abcam.com/abpromise> or contact our technical team.

### Terms and conditions

---

- Guarantee only valid for products bought direct from Abcam or one of our authorized distributors