

Product datasheet

Anti-CD146 antibody [EPR3207(2)] ab134065

Recombinant RabMAb

★★★★☆ [1 Abreviews](#) [5 References](#) [2 Images](#)

Overview

Product name	Anti-CD146 antibody [EPR3207(2)]
Description	Rabbit monoclonal [EPR3207(2)] to CD146
Host species	Rabbit
Tested applications	Suitable for: WB Unsuitable for: Flow Cyt, IHC-P or IP
Species reactivity	Reacts with: Human
Immunogen	Synthetic peptide within Human CD146 aa 200-300. The exact sequence is proprietary.
Positive control	A375, fetal artery and HUVEC cell lysates; HeLa cells.
General notes	<p>This product is a recombinant monoclonal antibody, which offers several advantages including:</p> <ul style="list-style-type: none">- High batch-to-batch consistency and reproducibility- Improved sensitivity and specificity- Long-term security of supply- Animal-free production <p>For more information see here.</p> <p>Our RabMAb[®] technology is a patented hybridoma-based technology for making rabbit monoclonal antibodies. For details on our patents, please refer to RabMAb[®] patents.</p> <p>Mouse, Rat: We have preliminary internal testing data to indicate this antibody may not react with these species. Please contact us for more information.</p>

Properties

Form	Liquid
Storage instructions	Shipped at 4°C. Store at -20°C. Stable for 12 months at -20°C.
Storage buffer	pH: 7.2 Preservative: 0.05% Sodium azide Constituents: 0.1% BSA, 40% Glycerol (glycerin, glycerine), 9.85% Tris glycine, 50% Tissue culture supernatant
Purity	Tissue culture supernatant
Clonality	Monoclonal

Clone number EPR3207(2)
Isotype IgG

Applications

The Abpromise guarantee Our **Abpromise guarantee** covers the use of ab134065 in the following tested applications. The application notes include recommended starting dilutions; optimal dilutions/concentrations should be determined by the end user.

Application	Abreviews	Notes
WB	★★★★★ (1)	1/1000 - 1/10000. Predicted molecular weight: 72 kDa.

Application notes Is unsuitable for Flow Cyt, IHC-P or IP.

Target

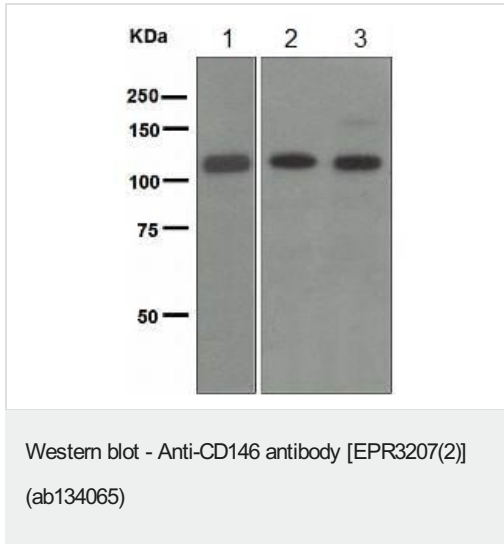
Function Plays a role in cell adhesion, and in cohesion of the endothelial monolayer at intercellular junctions in vascular tissue. Its expression may allow melanoma cells to interact with cellular elements of the vascular system, thereby enhancing hematogeneous tumor spread. Could be an adhesion molecule active in neural crest cells during embryonic development. Acts as surface receptor that triggers tyrosine phosphorylation of FYN and PTK2, and a transient increase in the intracellular calcium concentration.

Tissue specificity Detected in endothelial cells in vascular tissue throughout the body. May appear at the surface of neural crest cells during their embryonic migration. Appears to be limited to vascular smooth muscle in normal adult tissues. Associated with tumor progression and the development of metastasis in human malignant melanoma. Expressed most strongly on metastatic lesions and advanced primary tumors and is only rarely detected in benign melanocytic nevi and thin primary melanomas with a low probability of metastasis.

Sequence similarities Contains 3 Ig-like C2-type (immunoglobulin-like) domains.
Contains 2 Ig-like V-type (immunoglobulin-like) domains.

Cellular localization Membrane.

Images



All lanes : Anti-CD146 antibody [EPR3207(2)] (ab134065) at 1/1000 dilution

Lane 1 : A375 cell lysate

Lane 2 : Fetal artery lysate

Lane 3 : HUVEC cell lysate

Lysates/proteins at 10 µg per lane.

Secondary

All lanes : HRP labelled goat anti-rabbit at 1/2000 dilution

Predicted band size: 72 kDa

Why choose a recombinant antibody?

<p>Research with confidence Consistent and reproducible results</p>	<p>Long-term and scalable supply Recombinant technology</p>
<p>Success from the first experiment Confirmed specificity</p>	<p>Ethical standards compliant Animal-free production</p>

Anti-CD146 antibody [EPR3207(2)] (ab134065)

Please note: All products are "FOR RESEARCH USE ONLY. NOT FOR USE IN DIAGNOSTIC PROCEDURES"

Our Abpromise to you: Quality guaranteed and expert technical support

- Replacement or refund for products not performing as stated on the datasheet
- Valid for 12 months from date of delivery
- Response to your inquiry within 24 hours
- We provide support in Chinese, English, French, German, Japanese and Spanish
- Extensive multi-media technical resources to help you
- We investigate all quality concerns to ensure our products perform to the highest standards

If the product does not perform as described on this datasheet, we will offer a refund or replacement. For full details of the Abpromise, please visit <https://www.abcam.com/abpromise> or contact our technical team.

Terms and conditions

- Guarantee only valid for products bought direct from Abcam or one of our authorized distributors