

Product datasheet

Anti-CD16 antibody [EPR16784] - C-terminal ab198507

Recombinant RabMAb

[1 References](#) [7 Images](#)

Overview

Product name	Anti-CD16 antibody [EPR16784] - C-terminal
Description	Rabbit monoclonal [EPR16784] to CD16 - C-terminal
Host species	Rabbit
Specificity	Rat species is recommended based on IHC result, we do not guarantee it for western blot.
Tested applications	Suitable for: IHC-P, WB
Species reactivity	Reacts with: Rat, Human
Immunogen	Synthetic peptide. This information is proprietary to Abcam and/or its suppliers.
Positive control	IHC-P: Human liver, human thymus and rat liver tissues. WB: Human spleen tissue lysate.
General notes	<p>This product is a recombinant monoclonal antibody, which offers several advantages including:</p> <ul style="list-style-type: none"> - High batch-to-batch consistency and reproducibility - Improved sensitivity and specificity - Long-term security of supply - Animal-free production <p>For more information see here.</p> <p>Our RabMAb[®] technology is a patented hybridoma-based technology for making rabbit monoclonal antibodies. For details on our patents, please refer to RabMAb[®] patents.</p>

Properties

Form	Liquid
Storage instructions	Shipped at 4°C. Store at +4°C short term (1-2 weeks). Upon delivery aliquot. Store at -20°C long term. Avoid freeze / thaw cycle.
Storage buffer	<p>pH: 7.2</p> <p>Preservative: 0.01% Sodium azide</p> <p>Constituents: 40% Glycerol (glycerin, glycerine), 0.05% BSA, 59% PBS</p>
Purity	Protein A purified
Clonality	Monoclonal
Clone number	EPR16784
Isotype	IgG

Applications

The Abpromise guarantee

Our **Abpromise guarantee** covers the use of ab198507 in the following tested applications.

The application notes include recommended starting dilutions; optimal dilutions/concentrations should be determined by the end user.

Application	Abreviews	Notes
IHC-P		1/500. Perform heat mediated antigen retrieval with Tris/EDTA buffer pH 9.0 before commencing with IHC staining protocol.
WB		1/1000. Predicted molecular weight: 29 kDa. Rat species is recommended based on IHC result, we do not guarantee it for western blot.

Target

Function

Receptor for the Fc region of IgG. Binds complexed or aggregated IgG and also monomeric IgG. Mediates antibody-dependent cellular cytotoxicity (ADCC) and other antibody-dependent responses, such as phagocytosis.

Tissue specificity

Expressed on natural killer cells, macrophages, subpopulation of T-cells, immature thymocytes and placental trophoblasts.

Sequence similarities

Contains 2 Ig-like C2-type (immunoglobulin-like) domains.

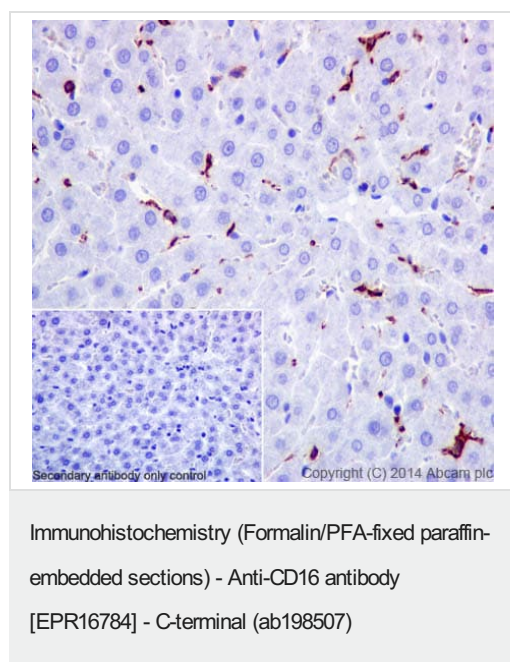
Post-translational modifications

Glycosylated. Contains high mannose- and complex-type oligosaccharides. The soluble form is produced by a proteolytic cleavage.

Cellular localization

Cell membrane. Secreted. Exists also as a soluble receptor.

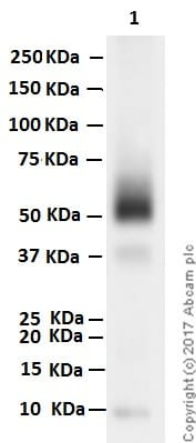
Images



Immunohistochemical analysis of paraffin-embedded Rat liver tissue labeling CD16 with ab198507 at 1/500 dilution followed by Goat Anti-Rabbit IgG H&L (HRP) ([ab97051](#)) at 1/500 dilution. Cytoplasm staining on kupffer cell of rat liver tissue is observed. Counter stained with Hematoxylin.

Negative control: Using PBS instead of primary antibody.

Perform heat mediated antigen retrieval with Tris/EDTA buffer pH 9.0 before commencing with IHC staining protocol.



Western blot - Anti-CD16 antibody [EPR16784] - C-terminal (ab198507)

Anti-CD16 antibody [EPR16784] - C-terminal (ab198507) at 1/1000 dilution + Human spleen tissue lysate at 20 µg

Secondary

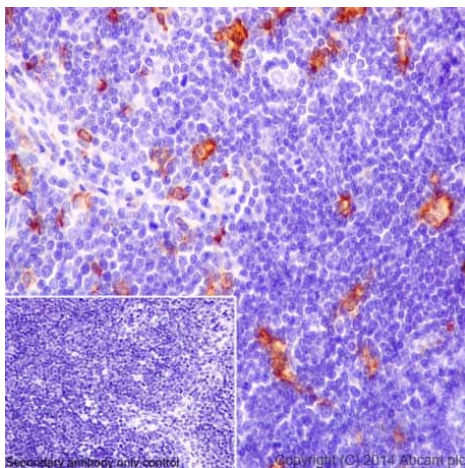
Goat Anti-Rabbit IgG (HRP) with minimal cross-reactivity with human IgG at 1/2000 dilution

Predicted band size: 29 kDa

Observed band size: 40-60 kDa

Exposure time: 5 seconds

Blocking and dilution buffer: 5% NFDM/TBST.

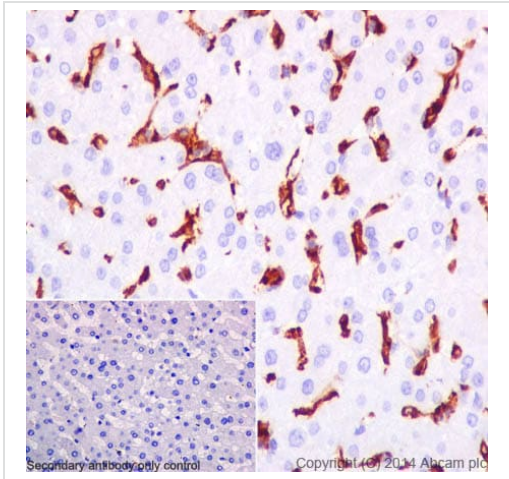


Immunohistochemistry (Formalin/PFA-fixed paraffin-embedded sections) - Anti-CD16 antibody [EPR16784] - C-terminal (ab198507)

Immunohistochemical analysis of paraffin-embedded Human thymus tissue labeling CD16 with ab198507 at 1/500 dilution followed by Goat Anti-Rabbit IgG H&L (HRP) ([ab97051](#)) at 1/500 dilution. Cytoplasm staining on macrophage of Human thymus tissue is observed. Counter stained with Hematoxylin.

Negative control: Using PBS instead of primary antibody.

Perform heat mediated antigen retrieval with Tris/EDTA buffer pH 9.0 before commencing with IHC staining protocol.



Immunohistochemistry (Formalin/PFA-fixed paraffin-embedded sections) - Anti-CD16 antibody [EPR16784] - C-terminal (ab198507)

Immunohistochemical analysis of paraffin-embedded Human liver tissue labeling CD16 with ab198507 at 1/500 dilution followed by Goat Anti-Rabbit IgG H&L (HRP) ([ab97051](#)) at 1/500 dilution. Cytoplasm staining on kupffer cell of Human liver tissue is observed. Counter stained with Hematoxylin.

Negative control: Using PBS instead of primary antibody.

Perform heat mediated antigen retrieval with Tris/EDTA buffer pH 9.0 before commencing with IHC staining protocol.

Tissue Microarray (TMA) data for ab198507			
Rat normal tissue samples			
Rat cardiac muscle	×	Rat pancreas	×
Rat cerebrum	×	Rat skeletal muscle	×
Rat colon	× (immune cells ✓)	Rat skin	×
Rat kidney	× (immune cells ✓)	Rat spleen	× (immune cells ✓)
Rat liver	× (Kupffer cells ✓)	Rat stomach	× (immune cells ✓)
Rat lung	×	Rat testis	×

Immunohistochemistry (Formalin/PFA-fixed paraffin-embedded sections) - Anti-CD16 antibody [EPR16784] - C-terminal (ab198507)

Tissue Microarrays stained for "Anti-CD16 antibody [EPR16784] - C-terminal" using "ab198507" in immunohistochemical analysis.

This table provides a detailed overview of positive (tick mark) and negative (cross mark) staining per sample type tested. The sections were pre-treated using Heat mediated antigen retrieval using Bond™ Epitope Retrieval Solution 2 (pH 9.0) for 20 minutes. The sections were incubated with ab198507 for 30 mins at room temperature followed by a ready to use Rabbit specific IHC polymer detection kit HRP/DAB ([ab209101](#)). The immunostaining was performed on a Leica Biosystems BOND® RX instrument.

Tissue Microarray (TMA) data for ab198507					
Human normal tissue samples			Human malignant tissue samples		
Human cardiac muscle	x	Human placenta	x (immune cells ✓)	Clear cell carcinoma of human kidney	x (immune cells ✓)
Human cerebrum	x (glucyte ✓)	Human skeletal muscle	x	Human bladder cancer	x (immune cells ✓)
Human colon	x (immune cells ✓)	Human skin	x	Human breast carcinoma	x (immune cells ✓)
Human endometrium	x (immune cells ✓)	Human spleen	✓	Human cervical carcinoma	x (immune cells ✓)
Human kidney	x (immune cells ✓)	Human stomach	x (immune cells ✓)	Human colon carcinoma	x (immune cells ✓)
Human liver	x (lupifer cells ✓)	Human testis	x (immune cells ✓)	Human endometrial carcinoma	x (immune cells ✓)
Human lung	x (immune cells ✓)	Human thyroid	x (immune cells ✓)	Human gastric adenocarcinoma	x (immune cells ✓)
Human mammary gland	x (immune cells ✓)	Human thymus	✓	Human glioma	✓
Human pancreas	x (immune cells ✓)	Human tonsil	✓		
				Human hepatocellular carcinoma	x (immune cells ✓)
				Human lung carcinoma	x (immune cells ✓)
				Human melanoma	x (immune cells ✓)
				Human ovarian carcinoma	x (immune cells ✓)
				Human pancreatic carcinoma	x (immune cells ✓)
				Human prostatic hyperplasia	x (immune cells ✓)
				Human thyroid carcinoma	x (immune cells ✓)

Immunohistochemistry (Formalin/PFA-fixed paraffin-embedded sections) - Anti-CD16 antibody
[EPR16784] - C-terminal (ab198507)

Tissue Microarrays stained for "Anti-CD16 antibody [EPR16784] - C-terminal" using "ab198507" in immunohistochemical analysis.

This table provides a detailed overview of positive (tick mark) and negative (cross mark) staining per sample type tested. The sections were pre-treated using Heat mediated antigen retrieval using Bond™ Epitope Retrieval Solution 2 (pH 9.0) for 20 minutes. The sections were incubated with ab198507 for 30 mins at room temperature followed by a ready to use Rabbit specific IHC polymer detection kit HRP/DAB (**ab209101**). The immunostaining was performed on a Leica Biosystems BOND® RX instrument.

Why choose a recombinant antibody?



Research with confidence
Consistent and reproducible results



Long-term and scalable supply
Recombinant technology



Success from the first experiment
Confirmed specificity



Ethical standards compliant
Animal-free production

Anti-CD16 antibody [EPR16784] - C-terminal
(ab198507)

Please note: All products are "FOR RESEARCH USE ONLY. NOT FOR USE IN DIAGNOSTIC PROCEDURES"

Our Abpromise to you: Quality guaranteed and expert technical support

- Replacement or refund for products not performing as stated on the datasheet
- Valid for 12 months from date of delivery
- Response to your inquiry within 24 hours
- We provide support in Chinese, English, French, German, Japanese and Spanish
- Extensive multi-media technical resources to help you
- We investigate all quality concerns to ensure our products perform to the highest standards

If the product does not perform as described on this datasheet, we will offer a refund or replacement. For full details of the Abpromise, please visit <https://www.abcam.com/abpromise> or contact our technical team.

Terms and conditions

- Guarantee only valid for products bought direct from Abcam or one of our authorized distributors