



Product datasheet

Anti-CD160 antibody ab202845

[4 References](#) [3 Images](#)

Overview

Product name	Anti-CD160 antibody
Description	Rabbit polyclonal to CD160
Host species	Rabbit
Tested applications	Suitable for: WB, IHC-P
Species reactivity	Reacts with: Rat, Human
Immunogen	Synthetic peptide within Human CD160 aa 50-150 conjugated to keyhole limpet haemocyanin. The exact immunogen sequence used to generate this antibody is proprietary information. If additional detail on the immunogen is needed to determine the suitability of the antibody for your needs, please contact our Scientific Support team to discuss your requirements. Database link: O95971-1  Run BLAST with  Run BLAST with
Positive control	Rat kidney tissue lysates; Human cervical carcinoma and Rat brain tissues.
General notes	<p>The Life Science industry has been in the grips of a reproducibility crisis for a number of years. Abcam is leading the way in addressing this with our range of recombinant monoclonal antibodies and knockout edited cell lines for gold-standard validation. Please check that this product meets your needs before purchasing.</p> <p>If you have any questions, special requirements or concerns, please send us an inquiry and/or contact our Support team ahead of purchase. Recommended alternatives for this product can be found below, along with publications, customer reviews and Q&As</p>

Properties

Form	Liquid
Storage instructions	Shipped at 4°C. Store at +4°C short term (1-2 weeks). Upon delivery aliquot. Store at -20°C long term. Avoid freeze / thaw cycle.
Storage buffer	pH: 7.40 Preservative: 0.02% Proclin 300 Constituents: 50% Glycerol (glycerin, glycerine), 1% BSA, 48.98% TBS, 1X
Purity	Protein A purified
Clonality	Polyclonal
Isotype	IgG

Applications

The Abpromise guarantee

Our **Abpromise guarantee** covers the use of ab202845 in the following tested applications.

The application notes include recommended starting dilutions; optimal dilutions/concentrations should be determined by the end user.

Application	Abreviews	Notes
WB		1/200. Predicted molecular weight: 20 kDa.
IHC-P		1/100 - 1/500.

Target

Function

Receptor showing broad specificity for both classical and non-classical MHC class I molecules.

Tissue specificity

Expressed in spleen, peripheral blood, and small intestine. Expression is restricted to functional NK and T cytotoxic lymphocytes.

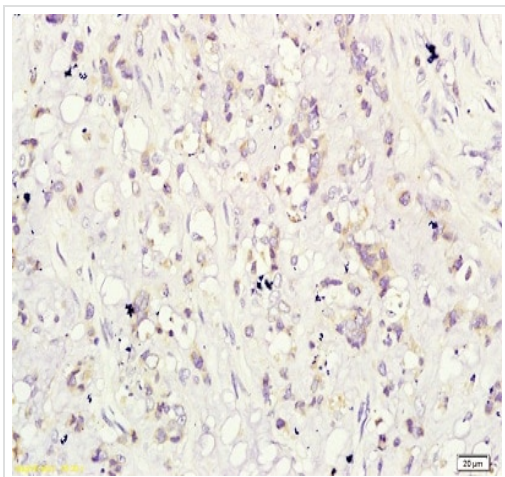
Sequence similarities

Contains 1 Ig-like V-type (immunoglobulin-like) domain.

Cellular localization

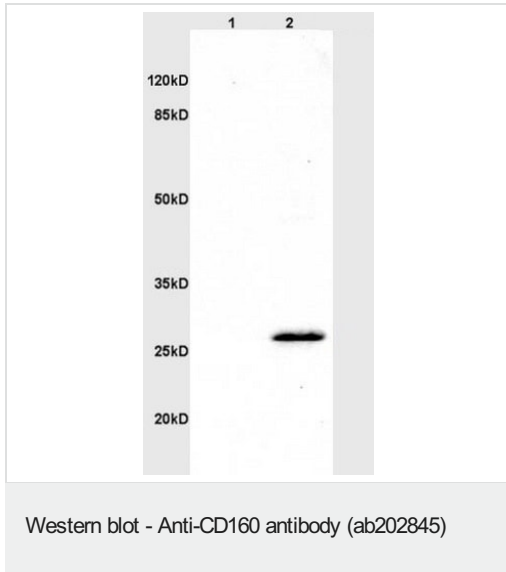
Cell membrane.

Images



Immunohistochemical analysis of formalin-fixed paraffin-embedded Human cervical carcinoma tissue labeling CD160 with ab202845 at 1/200 dilution, followed by conjugation to the secondary antibody and DAB staining.

Immunohistochemistry (Formalin/PFA-fixed paraffin-embedded sections) - Anti-CD160 antibody (ab202845)



All lanes : Anti-CD160 antibody (ab202845) at 1/200 dilution

Lane 1 : Rat brain tissue lysate

Lane 2 : Rat kidney tissue lysate

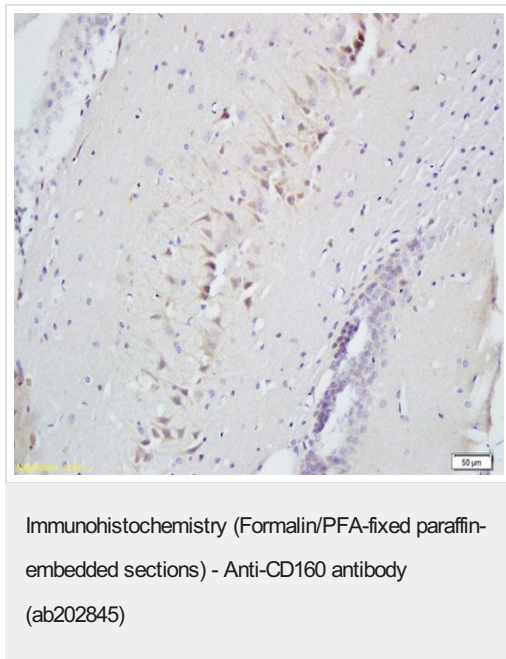
Secondary

All lanes : Goat Anti-Rabbit IgG Antibody (H+L), HRP Conjugated at 1/3000 dilution

Predicted band size: 20 kDa

Observed band size: 27 kDa

12% Gel.



Immunohistochemical analysis of formalin-fixed paraffin-embedded Rat brain tissue labeling CD160 with ab202845 at 1/200 dilution followed by conjugation to the secondary antibody and DAB staining.

Please note: All products are "FOR RESEARCH USE ONLY. NOT FOR USE IN DIAGNOSTIC PROCEDURES"

Our Abpromise to you: Quality guaranteed and expert technical support

- Replacement or refund for products not performing as stated on the datasheet
- Valid for 12 months from date of delivery

- Response to your inquiry within 24 hours
- We provide support in Chinese, English, French, German, Japanese and Spanish
- Extensive multi-media technical resources to help you
- We investigate all quality concerns to ensure our products perform to the highest standards

If the product does not perform as described on this datasheet, we will offer a refund or replacement. For full details of the Abpromise, please visit <https://www.abcam.com/abpromise> or contact our technical team.

Terms and conditions

- Guarantee only valid for products bought direct from Abcam or one of our authorized distributors