

Product datasheet

Anti-CD16+CD32 antibody [93] - Low endotoxin, Azide free ab171202

[2 Images](#)

Overview

Product name	Anti-CD16+CD32 antibody [93] - Low endotoxin, Azide free
Description	Rat monoclonal [93] to CD16+CD32 - Low endotoxin, Azide free
Host species	Rat
Tested applications	Suitable for: ICC/IF, Flow Cyt
Species reactivity	Reacts with: Mouse, Human
Immunogen	The details of the immunogen for this antibody are not available.
Positive control	Flow cyt: Mouse splenocyte suspensions. ICC/IF: Raw264.7 cells
General notes	Endotoxin Level: Less than 0.001 ng/µg antibody, as determined by the LAL assay.

The Life Science industry has been in the grips of a reproducibility crisis for a number of years. Abcam is leading the way in addressing this with our range of recombinant monoclonal antibodies and knockout edited cell lines for gold-standard validation. Please check that this product meets your needs before purchasing.

If you have any questions, special requirements or concerns, please send us an inquiry and/or contact our Support team ahead of purchase. Recommended alternatives for this product can be found below, along with publications, customer reviews and Q&As

Properties

Form	Liquid
Storage instructions	Shipped at 4°C. Store at +4°C short term (1-2 weeks). Upon delivery aliquot. Store at -20°C long term. Avoid freeze / thaw cycle.
Storage buffer	pH: 7.2 Constituent: PBS
Carrier free	Yes
Purity	Protein G purified
Clonality	Monoclonal
Clone number	93

Isotype	IgG2a
Light chain type	lambda

Applications

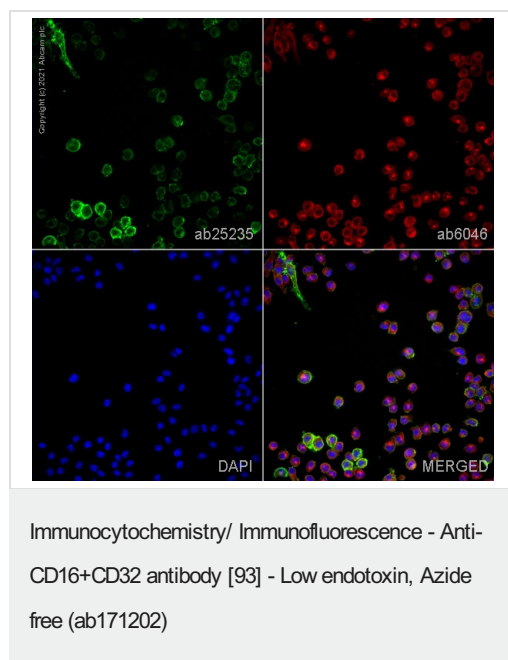
The Abpromise guarantee Our **Abpromise guarantee** covers the use of ab171202 in the following tested applications. The application notes include recommended starting dilutions; optimal dilutions/concentrations should be determined by the end user.

Application	Abreviews	Notes
ICC/IF		Use a concentration of 10 µg/ml.
Flow Cyt		Use 0.5µg for 10 ⁵⁻⁸ cells. (in a final volume of 100 µL). ab18450 - Rat monoclonal IgG2a, is suitable for use as an isotype control with this antibody.

Target

Relevance	Function: Binds to the Fc region of immunoglobulins gamma. Low affinity receptor. By binding to IgG it initiates cellular responses against pathogens and soluble antigens. Promotes phagocytosis of opsonized antigens. Tissue specificity: Found on monocytes, neutrophils and eosinophil platelets. Similarity: Contains 2 Ig-like C2-type (immunoglobulin-like) domains. PTM: Phosphorylated by SRC-type Tyr-kinases such as LYN, BLK, FYN, HCK and SYK.
Cellular localization	CD32: Type I membrane protein. CD16: Attached to the membrane by a GPI anchor. Exists also as a soluble receptor, produced by a proteolytic cleavage.

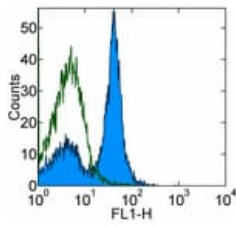
Images



This data was developed using the same antibody clone in a different buffer formulation containing PBS and sodium azide (**ab25235**)

ab25235 staining CD16 + CD32 in Raw264.7 cells. The cells were fixed with 4% paraformaldehyde (10 min), permeabilized with 0.1% PBS-Tween for 5 minutes and then blocked with 1% BSA/10% normal goat serum/0.3M glycine in 0.1%PBS-Tween for 1h. The cells were then incubated overnight at 4°C with **ab25235** at 10µg/ml and **ab6046**, Rabbit polyclonal to beta Tubulin - Loading Control. Cells were then incubated with **ab150165**, Goat polyclonal Secondary Antibody to Rat IgG - H&L (Alexa Fluor® 488), pre-adsorbed at 1/1000 dilution (shown in green) and **ab150080**, Goat polyclonal Secondary Antibody to Rabbit IgG - H&L (Alexa Fluor® 594) at 1/1000 dilution (shown in pseudocolour red). Nuclear DNA was labelled with DAPI (shown in blue).

Image was acquired with a high-content analyser (Operetta CLS, Perkin Elmer) and a maximum intensity projection of confocal sections is shown.



Flow cytometric analysis of BALB/c splenocytes with 0.25 µg Rat IgG2a K Isotype Control (open histogram) or 0.25 µg ab171202 (filled histogram) followed by Anti-Rat IgG FITC. Total viable cells were used for analysis.

Flow Cytometry - Anti-CD16+CD32 antibody [93] -
Low endotoxin, Azide free (ab171202)

Please note: All products are "FOR RESEARCH USE ONLY. NOT FOR USE IN DIAGNOSTIC PROCEDURES"

Our Abpromise to you: Quality guaranteed and expert technical support

- Replacement or refund for products not performing as stated on the datasheet
- Valid for 12 months from date of delivery
- Response to your inquiry within 24 hours
- We provide support in Chinese, English, French, German, Japanese and Spanish
- Extensive multi-media technical resources to help you
- We investigate all quality concerns to ensure our products perform to the highest standards

If the product does not perform as described on this datasheet, we will offer a refund or replacement. For full details of the Abpromise, please visit <https://www.abcam.com/abpromise> or contact our technical team.

Terms and conditions

- Guarantee only valid for products bought direct from Abcam or one of our authorized distributors