

Product datasheet

Anti-CD1b antibody [EPR7252] ab150410

Recombinant RabMAb

2 Images

Overview

Product name	Anti-CD1b antibody [EPR7252]
Description	Rabbit monoclonal [EPR7252] to CD1b
Host species	Rabbit
Tested applications	Suitable for: WB Unsuitable for: ICC/IF, IHC-P or IP
Species reactivity	Reacts with: Human
Immunogen	Synthetic peptide within Human CD1b aa 300-400 (C terminal). The exact sequence is proprietary.
Positive control	Human fetal thymus cell lysate
General notes	<p>This product is a recombinant monoclonal antibody, which offers several advantages including:</p> <ul style="list-style-type: none">- High batch-to-batch consistency and reproducibility- Improved sensitivity and specificity- Long-term security of supply- Animal-free production <p>For more information see here.</p> <p>Our RabMAb[®] technology is a patented hybridoma-based technology for making rabbit monoclonal antibodies. For details on our patents, please refer to RabMAb[®] patents.</p> <p>Mouse, Rat: We have preliminary internal testing data to indicate this antibody may not react with these species. Please contact us for more information.</p>

Properties

Form	Liquid
Storage instructions	Shipped at 4°C. Upon delivery aliquot and store at -20°C. Avoid freeze / thaw cycles.
Storage buffer	pH: 7.2 Preservative: 0.01% Sodium azide Constituents: 9% PBS, 40% Glycerol (glycerin, glycerine), 0.05% BSA, 50% Tissue culture supernatant
Purity	Tissue culture supernatant

Clonality	Monoclonal
Clone number	EPR7252
Isotype	IgG

Applications

The Abpromise guarantee Our **Abpromise guarantee** covers the use of ab150410 in the following tested applications. The application notes include recommended starting dilutions; optimal dilutions/concentrations should be determined by the end user.

Application	Abreviews	Notes
WB		1/1000 - 1/10000. Predicted molecular weight: 37 kDa.

Application notes Is unsuitable for ICC/IF, IHC-P or IP.

Target

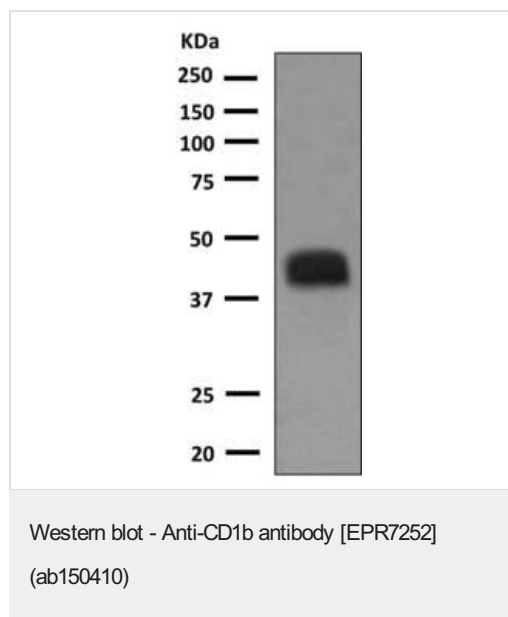
Function Antigen-presenting protein that binds self and non-self lipid and glycolipid antigens and presents them to T-cell receptors on natural killer T-cells.

Tissue specificity Expressed on cortical thymocytes, on certain T-cell leukemias, and in various other tissues.

Sequence similarities Contains 1 Ig-like (immunoglobulin-like) domain.

Cellular localization Cell membrane. Endosome membrane. Lysosome membrane. Subject to intracellular trafficking between the cell membrane, endosomes and lysosomes. Localizes to cell surface lipid rafts.

Images







Anti-CD1b antibody [EPR7252] (ab150410) at 1/1000 dilution + Human fetal thymus cell lysate at 10 µg

Predicted band size: 37 kDa

Observed band size: 45 kDa

Why choose a recombinant antibody?

 Research with confidence Consistent and reproducible results	 Long-term and scalable supply Recombinant technology
 Success from the first experiment Confirmed specificity	 Ethical standards compliant Animal-free production

Anti-CD1b antibody [EPR7252] (ab150410)

Please note: All products are "FOR RESEARCH USE ONLY. NOT FOR USE IN DIAGNOSTIC PROCEDURES"

Our Abpromise to you: Quality guaranteed and expert technical support

- Replacement or refund for products not performing as stated on the datasheet
- Valid for 12 months from date of delivery
- Response to your inquiry within 24 hours
- We provide support in Chinese, English, French, German, Japanese and Spanish
- Extensive multi-media technical resources to help you
- We investigate all quality concerns to ensure our products perform to the highest standards

If the product does not perform as described on this datasheet, we will offer a refund or replacement. For full details of the Abpromise, please visit <https://www.abcam.com/abpromise> or contact our technical team.

Terms and conditions

- Guarantee only valid for products bought direct from Abcam or one of our authorized distributors