

Product datasheet

Anti-CD20 antibody [L26] ab9475

★★★★★ [7 Abreviews](#) [61 References](#) [3 Images](#)

Overview

Product name	Anti-CD20 antibody [L26]
Description	Mouse monoclonal [L26] to CD20
Host species	Mouse
Tested applications	Suitable for: IHC-P, Flow Cyt
Species reactivity	Reacts with: Human
Immunogen	Tissue, cells or virus corresponding to Human CD20. Human tonsil B cells.
Positive control	Tonsil.
General notes	<p>The Life Science industry has been in the grips of a reproducibility crisis for a number of years. Abcam is leading the way in addressing this with our range of recombinant monoclonal antibodies and knockout edited cell lines for gold-standard validation. Please check that this product meets your needs before purchasing.</p> <p>If you have any questions, special requirements or concerns, please send us an inquiry and/or contact our Support team ahead of purchase. Recommended alternatives for this product can be found below, along with publications, customer reviews and Q&As</p>

Properties

Form	Liquid
Storage instructions	Shipped at 4°C. Store at +4°C short term (1-2 weeks). Store at -20°C or -80°C. Avoid freeze / thaw cycle.
Storage buffer	<p>pH: 7.30</p> <p>Preservative: 0.1% Sodium azide</p> <p>Contains PBS, BSA, Tween</p>
Purity	Tissue culture supernatant
Clonality	Monoclonal
Clone number	L26
Myeloma	unknown
Isotype	IgG2a
Light chain type	kappa

Applications

The Abpromise guarantee

Our **Abpromise guarantee** covers the use of ab9475 in the following tested applications.

The application notes include recommended starting dilutions; optimal dilutions/concentrations should be determined by the end user.

Application	Abreviews	Notes
IHC-P	★★★★★ (4)	1/50 - 1/100. Perform heat mediated antigen retrieval with citrate buffer pH 6 before commencing with IHC staining protocol.
Flow Cyt		Use 0.1µg for 10 ⁶ cells. ab170191 - Mouse monoclonal IgG2a, is suitable for use as an isotype control with this antibody.

Target

Function

This protein may be involved in the regulation of B-cell activation and proliferation.

Tissue specificity

Expressed on B-cells.

Involvement in disease

Defects in MS4A1 are the cause of immunodeficiency common variable type 5 (CVID5) [MIM:613495]; also called antibody deficiency due to CD20 defect. CVID5 is a primary immunodeficiency characterized by antibody deficiency, hypogammaglobulinemia, recurrent bacterial infections and an inability to mount an antibody response to antigen. The defect results from a failure of B-cell differentiation and impaired secretion of immunoglobulins; the numbers of circulating B cells is usually in the normal range, but can be low.

Sequence similarities

Belongs to the MS4A family.

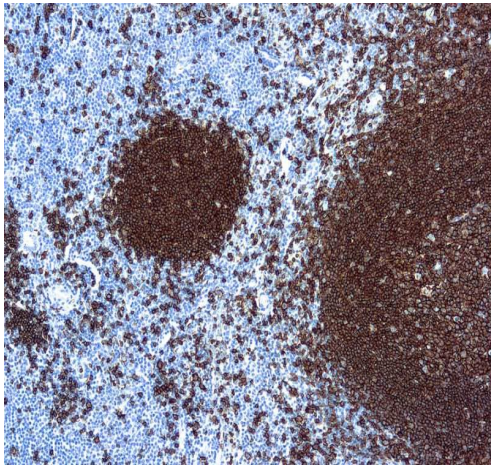
Post-translational modifications

Phosphorylated. Might be functionally regulated by protein kinase(s).

Cellular localization

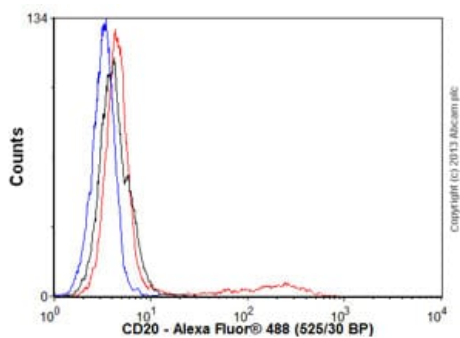
Membrane.

Images



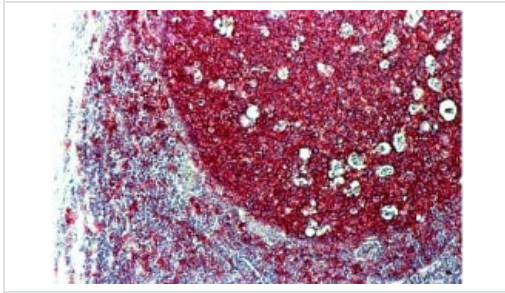
Immunohistochemistry (Formalin/PFA-fixed paraffin-embedded sections) - Anti-CD20 antibody [L26] (ab9475)

Formalin-fixed, paraffin-embedded human tonsil tissue stained for CD20 using ab9475 at 1/50 dilution in immunohistochemical analysis. Antigen retrieval with citrate buffer pH 6.0.



Flow Cytometry - Anti-CD20 antibody [L26] (ab9475)

Human peripheral blood lymphocytes stained with ab9475 (red line). Human whole blood was processed using a modified protocol based on Chow *et al*, 2005 (PMID: 16080188). In brief, human whole blood was fixed in 4% formaldehyde (methanol-free) for 10 min at 22°C. Red blood cells were then lysed by the addition of Triton X-100 (final concentration - 0.1%) for 15 min at 37°C. For experimentation, cells were treated with 50% methanol (-20°C) for 15 min at 4°C. Cells were then incubated with the antibody (ab9475, 0.1µg/1x10⁶ cells) for 30 min at 4°C. The secondary antibody used was Alexa Fluor® 488 goat anti-mouse IgG (H&L) (**ab150113**) at 1/2000 dilution for 30 min at 4°C. Isotype control antibody (black line) was mouse IgG2a [ICIGG2A] (**ab91361**, 0.1µg/1x10⁶ cells) used under the same conditions. Unlabelled sample (blue line) was also used as a control. Acquisition of >30,000 total events were collected using a 20mW Argon ion laser (488nm) and 525/30 bandpass filter. Gating strategy - peripheral blood lymphocytes.



ab9475 - immunohistochemistry

Formalin fixed paraffin embedded human tonsil stained with CD20, B cell using ABC and Fast Red chromagen.

Immunohistochemistry (Formalin/PFA-fixed paraffin-embedded sections) - Anti-CD20 antibody [L26] (ab9475)

Please note: All products are "FOR RESEARCH USE ONLY. NOT FOR USE IN DIAGNOSTIC PROCEDURES"

Our Abpromise to you: Quality guaranteed and expert technical support

- Replacement or refund for products not performing as stated on the datasheet
- Valid for 12 months from date of delivery
- Response to your inquiry within 24 hours
- We provide support in Chinese, English, French, German, Japanese and Spanish
- Extensive multi-media technical resources to help you
- We investigate all quality concerns to ensure our products perform to the highest standards

If the product does not perform as described on this datasheet, we will offer a refund or replacement. For full details of the Abpromise, please visit <https://www.abcam.com/abpromise> or contact our technical team.

Terms and conditions

- Guarantee only valid for products bought direct from Abcam or one of our authorized distributors