

Product datasheet

Anti-CD229 antibody ab113285

[3 Images](#)

Overview

Product name	Anti-CD229 antibody
Description	Rabbit polyclonal to CD229
Host species	Rabbit
Specificity	At least three isoforms are known to exist. ab113285 is predicted to not cross-react with other family members.
Tested applications	Suitable for: ICC/IF, WB, ICC
Species reactivity	Reacts with: Human
Immunogen	An 18 amino acid peptide near the C terminus of Human CD229.
Positive control	293 cell lysate.
General notes	<p>The Life Science industry has been in the grips of a reproducibility crisis for a number of years. Abcam is leading the way in addressing this with our range of recombinant monoclonal antibodies and knockout edited cell lines for gold-standard validation. Please check that this product meets your needs before purchasing.</p> <p>If you have any questions, special requirements or concerns, please send us an inquiry and/or contact our Support team ahead of purchase. Recommended alternatives for this product can be found below, along with publications, customer reviews and Q&As</p>

Properties

Form	Liquid
Storage instructions	Shipped at 4°C. Store at 4°C (stable for up to 12 months).
Storage buffer	pH: 7.2 Preservative: 0.02% Sodium azide Constituent: 99% PBS
Purity	Immunogen affinity purified
Purification notes	ab113285 is purified by affinity chromatography via a peptide column.
Clonality	Polyclonal
Isotype	IgG

Applications

Applications

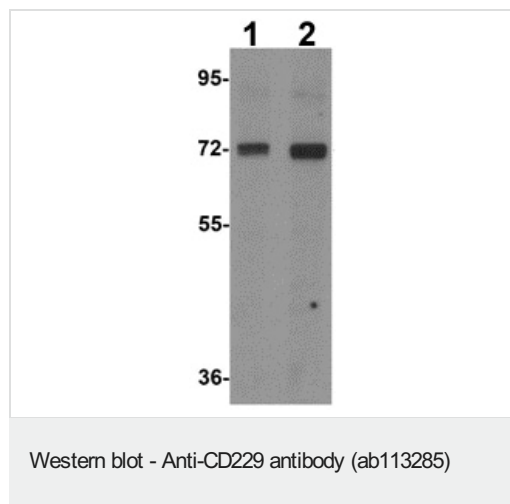
The Abpromise guarantee Our **Abpromise guarantee** covers the use of ab113285 in the following tested applications. The application notes include recommended starting dilutions; optimal dilutions/concentrations should be determined by the end user.

Application	Abreviews	Notes
ICC/IF		Use a concentration of 20 µg/ml.
WB		Use a concentration of 1 - 2 µg/ml. Predicted molecular weight: 72 kDa.
ICC		1/10.

Target

Function	May participate in adhesion reactions between T lymphocytes and accessory cells by homophilic interaction.
Sequence similarities	Contains 2 Ig-like C2-type (immunoglobulin-like) domains. Contains 2 Ig-like V-type (immunoglobulin-like) domains.
Cellular localization	Membrane.

Images



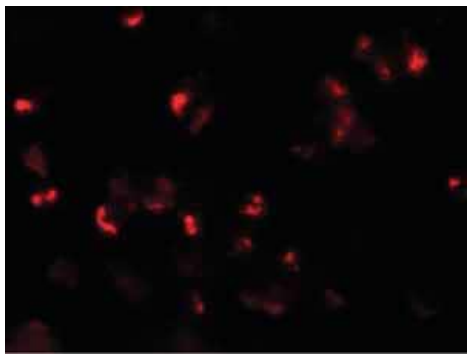
Lane 1 : Anti-CD229 antibody (ab113285) at 1 µg/ml

Lane 2 : Anti-CD229 antibody (ab113285) at 2 µg/ml

All lanes : 293 cell lysate

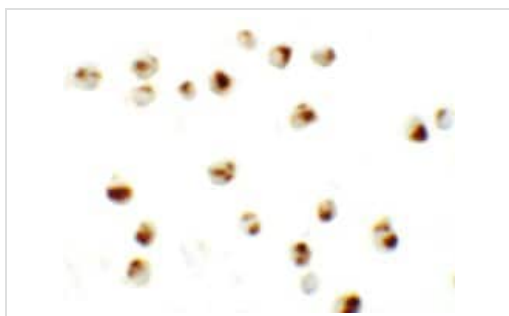
Lysates/proteins at 15 µg/ml per lane.

Predicted band size: 72 kDa



Immunofluorescence of CD229 in 293 cells with ab113285 at 20 ug/mL.

Immunocytochemistry/ Immunofluorescence - Anti-CD229 antibody (ab113285)



Immunocytochemical analysis of 293 cells, staining CD229 with ab113285 at 10 µg/ml.

Immunocytochemistry - Anti-CD229 antibody (ab113285)

Please note: All products are "FOR RESEARCH USE ONLY. NOT FOR USE IN DIAGNOSTIC PROCEDURES"

Our Abpromise to you: Quality guaranteed and expert technical support

- Replacement or refund for products not performing as stated on the datasheet
- Valid for 12 months from date of delivery
- Response to your inquiry within 24 hours
- We provide support in Chinese, English, French, German, Japanese and Spanish
- Extensive multi-media technical resources to help you
- We investigate all quality concerns to ensure our products perform to the highest standards

If the product does not perform as described on this datasheet, we will offer a refund or replacement. For full details of the Abpromise, please visit <https://www.abcam.com/abpromise> or contact our technical team.

Terms and conditions

- Guarantee only valid for products bought direct from Abcam or one of our authorized distributors