




Product datasheet

Anti-CD28 antibody ab203084

[3 References](#) [4 Images](#)

Overview

Product name	Anti-CD28 antibody
Description	Rabbit polyclonal to CD28
Host species	Rabbit
Tested applications	Suitable for: IHC-P, Flow Cyt
Species reactivity	Reacts with: Mouse, Rat Predicted to work with: Human 
Immunogen	Synthetic peptide within Mouse CD28 aa 1-100 conjugated to keyhole limpet haemocyanin. The exact immunogen sequence used to generate this antibody is proprietary information. If additional detail on the immunogen is needed to determine the suitability of the antibody for your needs, please contact our Scientific Support team to discuss your requirements. Database link: P31041  Run BLAST with  Run BLAST with
Positive control	Mouse splenocytes; rat colitis and mouse lung tissues.
General notes	<p>The Life Science industry has been in the grips of a reproducibility crisis for a number of years. Abcam is leading the way in addressing this with our range of recombinant monoclonal antibodies and knockout edited cell lines for gold-standard validation. Please check that this product meets your needs before purchasing.</p> <p>If you have any questions, special requirements or concerns, please send us an inquiry and/or contact our Support team ahead of purchase. Recommended alternatives for this product can be found below, along with publications, customer reviews and Q&As</p>

Properties

Form	Liquid
Storage instructions	Shipped at 4°C. Store at +4°C short term (1-2 weeks). Upon delivery aliquot. Store at -20°C long term. Avoid freeze / thaw cycle.
Storage buffer	pH: 7.40 Preservative: 0.02% Proclin 300 Constituents: 50% Glycerol (glycerin, glycerine), 1% BSA, 48.98% TBS, 1X
Purity	Protein A purified
Clonality	Polyclonal

Isotype

IgG

Applications

The Abpromise guarantee

Our **Abpromise guarantee** covers the use of ab203084 in the following tested applications.

The application notes include recommended starting dilutions; optimal dilutions/concentrations should be determined by the end user.

Application	Abreviews	Notes
IHC-P		1/100 - 1/500. When using a fluorescent probe the recommended dilution is 1/50 – 1/200.
Flow Cyt		1/20 - 1/100.

Target

Function

Involved in T-cell activation, the induction of cell proliferation and cytokine production and promotion of T-cell survival.

Tissue specificity

Expressed in T-cells and plasma cells, but not in less mature B-cells.

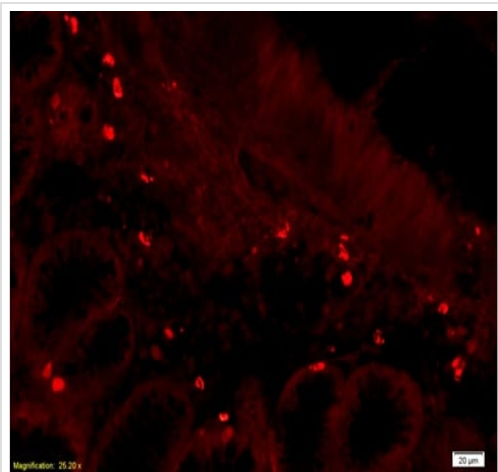
Sequence similarities

Contains 1 Ig-like V-type (immunoglobulin-like) domain.

Cellular localization

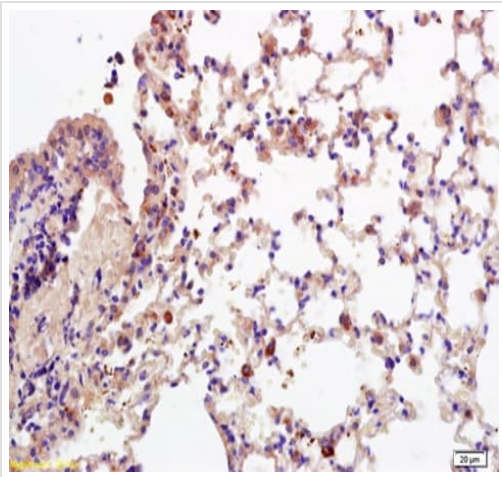
Membrane.

Images



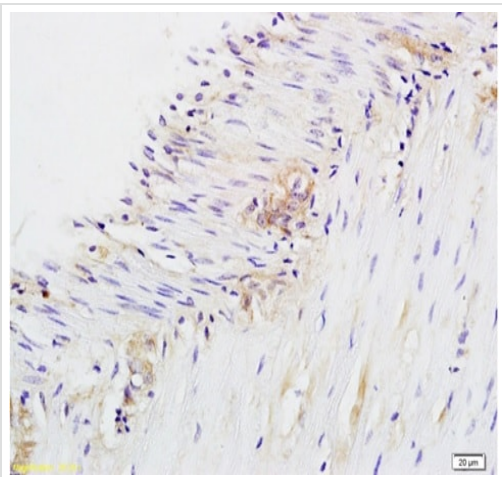
Immunohistochemical analysis of formalin-fixed, paraffin embedded rat colitis tissue labeling CD28 with ab203084 at 1/200 dilution followed by Goat Anti-Rabbit IgG, Cy3 conjugated at 1/200 dilution for 40 minutes at 37°C.

Immunohistochemistry (Formalin/PFA-fixed paraffin-embedded sections) - Anti-CD28 antibody (ab203084)



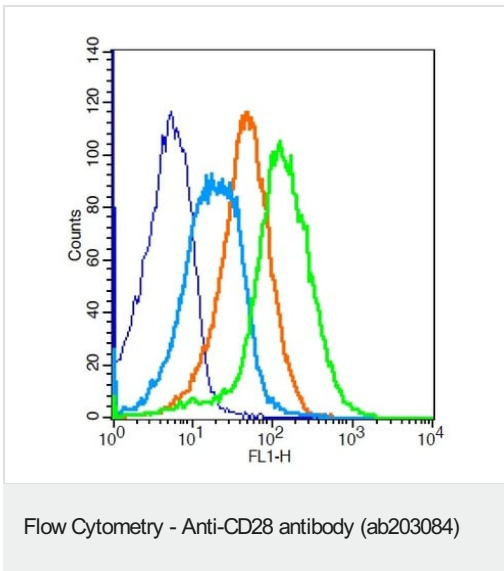
Immunohistochemistry (Formalin/PFA-fixed paraffin-embedded sections) - Anti-CD28 antibody (ab203084)

Immunohistochemical analysis of formalin-fixed, paraffin-embedded mouse lung tissue labeling CD28 with ab203084 at 1/200 dilution followed by conjugation to the secondary antibody and DAB staining.



Immunohistochemistry (Formalin/PFA-fixed paraffin-embedded sections) - Anti-CD28 antibody (ab203084)

Immunohistochemical analysis of formalin-fixed, paraffin-embedded rat colitis tissue labeling CD28 with ab203084 at 1/200 dilution followed by conjugation to the secondary antibody and DAB staining.



Flow cytometric analysis of Mouse thymocytes labeling CD28 with ab203084 at 1/100 dilution for 30 minutes followed by incubation with a FITC conjugated secondary (green) for 30 minutes compared to control cells (blue), secondary only (light blue) and isotype control (orange).

Please note: All products are "FOR RESEARCH USE ONLY. NOT FOR USE IN DIAGNOSTIC PROCEDURES"

Our Abpromise to you: Quality guaranteed and expert technical support

- Replacement or refund for products not performing as stated on the datasheet
- Valid for 12 months from date of delivery
- Response to your inquiry within 24 hours
- We provide support in Chinese, English, French, German, Japanese and Spanish
- Extensive multi-media technical resources to help you
- We investigate all quality concerns to ensure our products perform to the highest standards

If the product does not perform as described on this datasheet, we will offer a refund or replacement. For full details of the Abpromise, please visit <https://www.abcam.com/abpromise> or contact our technical team.

Terms and conditions

- Guarantee only valid for products bought direct from Abcam or one of our authorized distributors