


## Product datasheet

# Anti-CD28 antibody [CD28.2] - Low endotoxin, Azide free ab85986

[11 References](#) [2 Images](#)

### Overview

<b>Product name</b>	Anti-CD28 antibody [CD28.2] - Low endotoxin, Azide free
<b>Description</b>	Mouse monoclonal [CD28.2] to CD28 - Low endotoxin, Azide free
<b>Host species</b>	Mouse
<b>Tested applications</b>	<b>Suitable for:</b> Flow Cyt
<b>Species reactivity</b>	<b>Reacts with:</b> Human <b>Predicted to work with:</b> Non human primates 
<b>Immunogen</b>	Tissue, cells or virus corresponding to CD28. Human CD28 transfected murine T cell hybridoma.
<b>Positive control</b>	Flow Cyt: CD28 positive lymphocytes.
<b>General notes</b>	<p>The Life Science industry has been in the grips of a reproducibility crisis for a number of years. Abcam is leading the way in addressing this with our range of recombinant monoclonal antibodies and knockout edited cell lines for gold-standard validation. Please check that this product meets your needs before purchasing.</p> <p>If you have any questions, special requirements or concerns, please send us an inquiry and/or contact our Support team ahead of purchase. Recommended alternatives for this product can be found below, along with publications, customer reviews and Q&amp;As</p>

### Properties

<b>Form</b>	Liquid
<b>Storage instructions</b>	Shipped at 4°C. Store at +4°C short term (1-2 weeks). Upon delivery aliquot. Store at -20°C long term.
<b>Storage buffer</b>	pH: 7.20 Constituents: 0.14% Monobasic dihydrogen sodium phosphate, 0.87% Sodium chloride
	Azide free.
<b>Carrier free</b>	Yes
<b>Purity</b>	Affinity purified
<b>Purification notes</b>	This purified format is guaranteed to be >90% pure as determined by SDS-PAGE analysis. Endotoxin level is less than or equal to 0.01 EU/ug, as determined by the LaL assay.

Clonality	Monoclonal
Clone number	CD28.2
Isotype	IgG1

## Applications

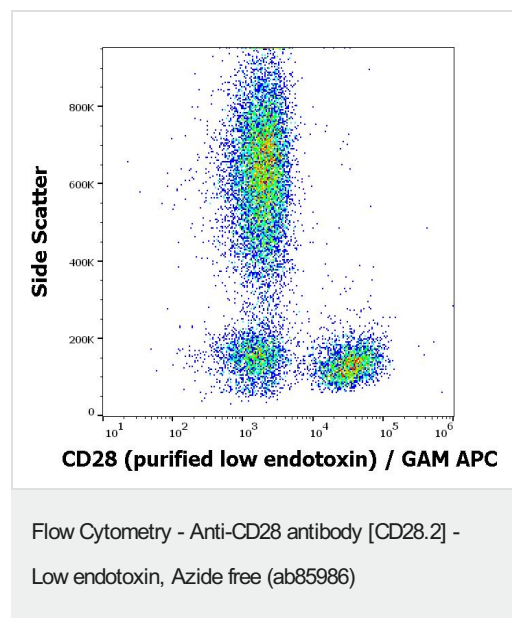
**The Abpromise guarantee** Our **Abpromise guarantee** covers the use of ab85986 in the following tested applications. The application notes include recommended starting dilutions; optimal dilutions/concentrations should be determined by the end user.

Application	Abreviews	Notes
Flow Cyt		Use a concentration of 1 - 12 µg/ml.

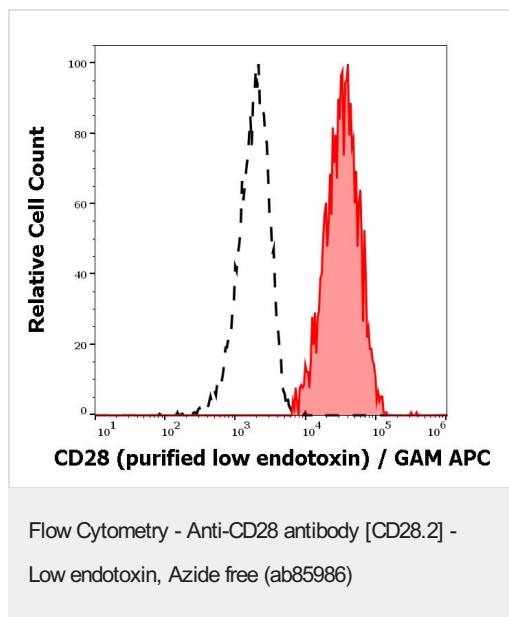
## Target

<b>Function</b>	Involved in T-cell activation, the induction of cell proliferation and cytokine production and promotion of T-cell survival.
<b>Tissue specificity</b>	Expressed in T-cells and plasma cells, but not in less mature B-cells.
<b>Sequence similarities</b>	Contains 1 Ig-like V-type (immunoglobulin-like) domain.
<b>Cellular localization</b>	Membrane.

## Images



Flow cytometry surface staining pattern of human peripheral blood stained using ab85986 GAM APC.



Separation of human CD28 positive lymphocytes (red-filled) from neutrophil granulocytes (black-dashed) in flow cytometry analysis (surface staining) of human peripheral whole blood stained using ab85986 GAM APC.

**Please note:** All products are "FOR RESEARCH USE ONLY. NOT FOR USE IN DIAGNOSTIC PROCEDURES"

### Our Abpromise to you: Quality guaranteed and expert technical support

- Replacement or refund for products not performing as stated on the datasheet
- Valid for 12 months from date of delivery
- Response to your inquiry within 24 hours
- We provide support in Chinese, English, French, German, Japanese and Spanish
- Extensive multi-media technical resources to help you
- We investigate all quality concerns to ensure our products perform to the highest standards

If the product does not perform as described on this datasheet, we will offer a refund or replacement. For full details of the Abpromise, please visit <https://www.abcam.com/abpromise> or contact our technical team.

### Terms and conditions

- Guarantee only valid for products bought direct from Abcam or one of our authorized distributors