

Product datasheet

Anti-CD3 zeta antibody [EP286Y] ab40804

Recombinant RabMAb

★★★★★ [1 Abreviews](#) [8 References](#) [3 Images](#)

Overview

Product name	Anti-CD3 zeta antibody [EP286Y]
Description	Rabbit monoclonal [EP286Y] to CD3 zeta
Host species	Rabbit
Tested applications	Suitable for: Flow Cyt (Intra), ICC/IF
Species reactivity	Reacts with: Human
Immunogen	Synthetic peptide within Human CD3 zeta aa 100 to the C-terminus (C terminal). The exact sequence is proprietary.
Positive control	ICC/IF: Daudi (Human Burkitt's lymphoma lymphoblast)
General notes	<p>We are constantly working hard to ensure we provide our customers with best in class antibodies. As a result of this work we are pleased to now offer this antibody in purified format. We are in the process of updating our datasheets. The purified format is designated 'PUR' on our product labels. If you have any questions regarding this update, please contact our Scientific Support team.</p> <p>This product is a recombinant monoclonal antibody, which offers several advantages including:</p> <ul style="list-style-type: none">- High batch-to-batch consistency and reproducibility- Improved sensitivity and specificity- Long-term security of supply- Animal-free production <p>For more information see here.</p> <p>Our RabMAb[®] technology is a patented hybridoma-based technology for making rabbit monoclonal antibodies. For details on our patents, please refer to RabMAb[®] patents.</p>

Properties

Form	Liquid
Storage instructions	Shipped at 4°C. Store at +4°C short term (1-2 weeks). Upon delivery aliquot. Store at -20°C. Avoid freeze / thaw cycle.
Storage buffer	pH: 7.20 Preservative: 0.01% Sodium azide Constituents: 59% PBS, 40% Glycerol (glycerin, glycerine), 0.05% BSA

Purity	Protein A purified
Clonality	Monoclonal
Clone number	EP286Y
Isotype	IgG

Applications

The Abpromise guarantee Our **Abpromise guarantee** covers the use of ab40804 in the following tested applications.

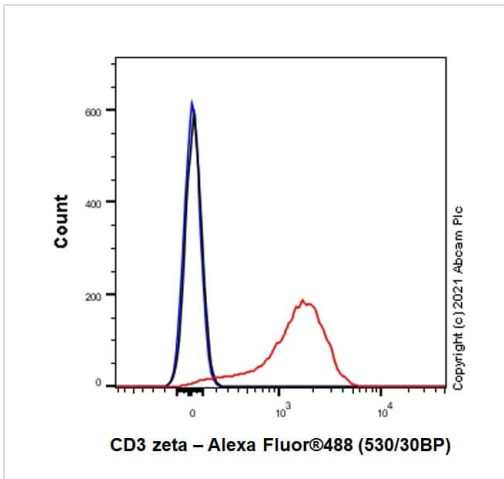
The application notes include recommended starting dilutions; optimal dilutions/concentrations should be determined by the end user.

Application	Abreviews	Notes
Flow Cyt (Intra)		1/20. ab172730 - Rabbit monoclonal IgG, is suitable for use as an isotype control with this antibody.
ICC/IF		1/50.

Target

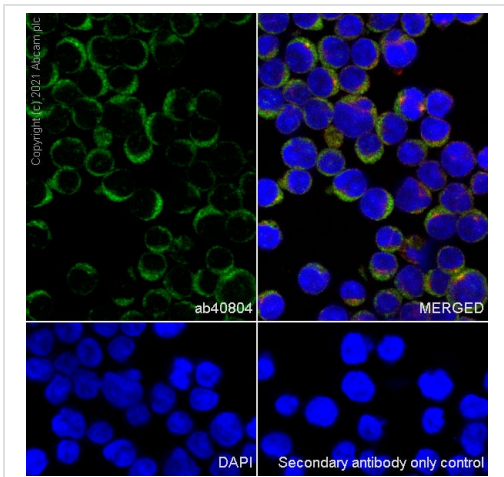
Function	Probable role in assembly and expression of the TCR complex as well as signal transduction upon antigen triggering.
Involvement in disease	Defects in CD247 are the cause of immunodeficiency due to defect in CD3-zeta (CD3ZID) [MIM:610163]. An immunological deficiency characterized by T-cells impaired immune response to alloantigens, tetanus toxoid and mitogens.
Sequence similarities	Belongs to the CD3Z/FCER1G family. Contains 3 ITAM domains.
Domain	The ITAM domains mediate interaction with SHB.
Post-translational modifications	Phosphorylated on Tyr residues after T-cell receptor triggering.
Cellular localization	Membrane.

Images



Flow Cytometry (Intracellular) - Anti-CD3 zeta antibody [EP286Y] (ab40804)





Flow Cytometry analysis of Jurkat (Human T cell leukemia T lymphocyte) cells labelling CD3 zeta with Purified ab40804 at 1:20 dilution (10 µg/ml) (Red). Cells were fixed with 4% Paraformaldehyde and permeabilised with 90% Methanol. A Goat anti rabbit IgG (Alexa Fluor™ 488, **ab150077**) secondary antibody was used at 1:2000. Isotype control - Rabbit monoclonal IgG (Black). Unlabelled control - Cell without incubation with primary antibody and secondary antibody (Blue).



Immunocytochemistry/ Immunofluorescence - Anti-CD3 zeta antibody [EP286Y] (ab40804)

Immunocytochemistry analysis of Daudi (Human Burkitt's lymphoma lymphoblast) cells labelling CD3 zeta with Purified ab40804 at 1/50 dilution (4.5 µg/mL). Cells were fixed in 100% Methanol and permeabilized with 0.1% tritonX-100. Cells were counterstained with Ab195889 Anti-alpha Tubulin antibody [DM1A] - Microtubule Marker (Alexa Fluor® 594) 1/200 (2.5 µg/mL). Goat anti rabbit IgG (Alexa Fluor® 488, **ab150077**) was used as the secondary antibody at 1/1000 (2 µg/mL) dilution. DAPI (blue) was used as nuclear counterstain. PBS instead of the primary antibody was used as the secondary antibody only control.

Why choose a recombinant antibody?

 <p>Research with confidence Consistent and reproducible results</p>	 <p>Long-term and scalable supply Recombinant technology</p>
 <p>Success from the first experiment Confirmed specificity</p>	 <p>Ethical standards compliant Animal-free production</p>

Anti-CD3 zeta antibody [EP286Y] (ab40804)

Please note: All products are "FOR RESEARCH USE ONLY. NOT FOR USE IN DIAGNOSTIC PROCEDURES"

Our Abpromise to you: Quality guaranteed and expert technical support

- Replacement or refund for products not performing as stated on the datasheet
- Valid for 12 months from date of delivery
- Response to your inquiry within 24 hours
- We provide support in Chinese, English, French, German, Japanese and Spanish
- Extensive multi-media technical resources to help you
- We investigate all quality concerns to ensure our products perform to the highest standards

If the product does not perform as described on this datasheet, we will offer a refund or replacement. For full details of the Abpromise, please visit <https://www.abcam.com/abpromise> or contact our technical team.

Terms and conditions

- Guarantee only valid for products bought direct from Abcam or one of our authorized distributors