

Product datasheet

Anti-CD300C antibody [EPR16470] ab195811

Recombinant RabMAb

[4 Images](#)

Overview

Product name	Anti-CD300C antibody [EPR16470]
Description	Rabbit monoclonal [EPR16470] to CD300C
Host species	Rabbit
Tested applications	Suitable for: WB
Species reactivity	Reacts with: Mouse, Rat, Human
Immunogen	Synthetic peptide. This information is proprietary to Abcam and/or its suppliers.
Positive control	THP1, Human fetal spleen and fetal brain, Mouse heart, kidney and spleen, Rat heart and spleen, RAW 264.7, PC12 and NIH 3T3 lysates; Jurkat cells.
General notes	<p>This product is a recombinant monoclonal antibody, which offers several advantages including:</p> <ul style="list-style-type: none">- High batch-to-batch consistency and reproducibility- Improved sensitivity and specificity- Long-term security of supply- Animal-free production <p>For more information see here.</p> <p>Our RabMAb[®] technology is a patented hybridoma-based technology for making rabbit monoclonal antibodies. For details on our patents, please refer to RabMAb[®] patents.</p>

Properties

Form	Liquid
Storage instructions	Shipped at 4°C. Store at +4°C short term (1-2 weeks). Upon delivery aliquot. Store at -20°C long term. Avoid freeze / thaw cycle.
Storage buffer	pH: 7.2 Preservative: 0.01% Sodium azide Constituents: 40% Glycerol (glycerin, glycerine), 59% PBS, 0.05% BSA
Purity	Protein A purified
Clonality	Monoclonal
Clone number	EPR16470
Isotype	IgG

Applications

The Abpromise guarantee

Our **Abpromise guarantee** covers the use of ab195811 in the following tested applications.

The application notes include recommended starting dilutions; optimal dilutions/concentrations should be determined by the end user.

Application	Abreviews	Notes
WB		1/1000. Detects a band of approximately 40 kDa (predicted molecular weight: 25 kDa).

Target

Tissue specificity

Present on the surface of monocytes, neutrophils, a proportion of peripheral blood T- and B-lymphocytes and lymphocytic cell lines.

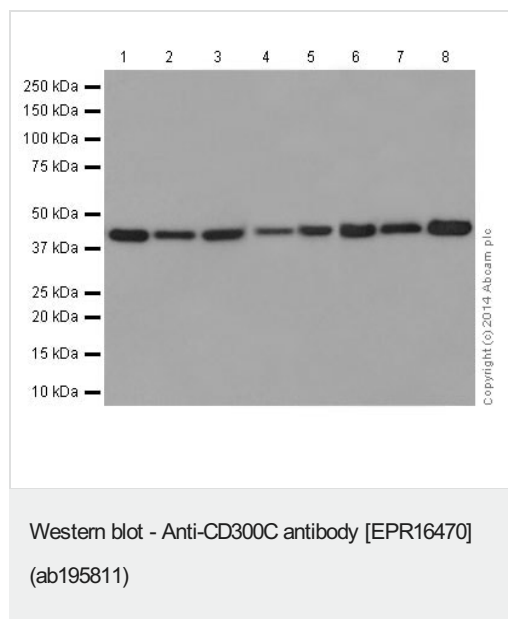
Sequence similarities

Belongs to the CD300 family.
Contains 1 Ig-like V-type (immunoglobulin-like) domain.

Cellular localization

Cell membrane.

Images



All lanes : Anti-CD300C antibody [EPR16470] (ab195811) at 1/1000 dilution

Lane 1 : Mouse heart tissue lysate

Lane 2 : Mouse kidney tissue lysate

Lane 3 : Mouse spleen tissue lysate

Lane 4 : Rat heart tissue lysate

Lane 5 : Rat spleen tissue lysate

Lane 6 : RAW 264.7 cell lysate

Lane 7 : PC12 lysate

Lane 8 : NIH/3T3 cell lysate

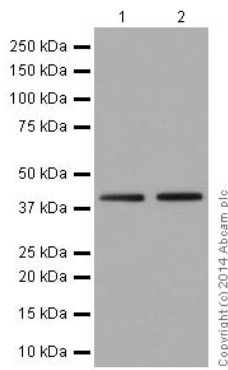
Lysates/proteins at 10 µg per lane.

Secondary

All lanes : Goat Anti-Rabbit IgG, (H+L), Peroxidase conjugate at 1/1000 dilution

Predicted band size: 25 kDa

The observed MW is consistent with what has been described in the literature (PMID:20656921)



Western blot - Anti-CD300C antibody [EPR16470] (ab195811)

All lanes : Anti-CD300C antibody [EPR16470] (ab195811) at 1/1000 dilution

Lane 1 : Human fetal spleen lysate

Lane 2 : Human fetal brain lysate

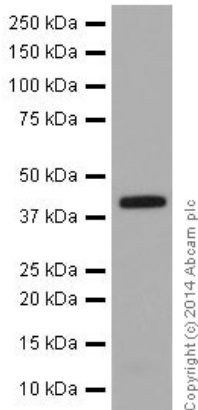
Lysates/proteins at 10 µg per lane.

Secondary

All lanes : Anti-Rabbit IgG (HRP), specific to the non-reduced form of IgG at 1/1000 dilution

Predicted band size: 25 kDa

The observed MW is consistent with what has been described in the literature (PMID:20656921)



Western blot - Anti-CD300C antibody [EPR16470] (ab195811)

Anti-CD300C antibody [EPR16470] (ab195811) at 1/1000 dilution + THP1 cell lysate at 10 µg

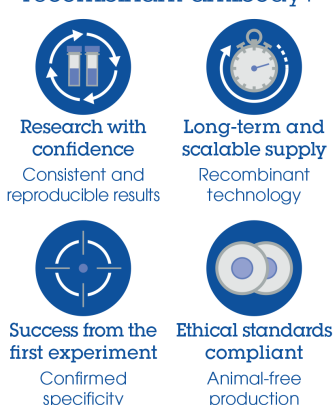
Secondary

Goat Anti-Rabbit IgG, (H+L), Peroxidase conjugate at 1/1000 dilution

Predicted band size: 25 kDa

The observed MW is consistent with what has been described in the literature (PMID:20656921)

Why choose a recombinant antibody?



Research with confidence
Consistent and reproducible results

Long-term and scalable supply
Recombinant technology

Success from the first experiment
Confirmed specificity

Ethical standards compliant
Animal-free production

Anti-CD300C antibody [EPR16470] (ab195811)

Please note: All products are "FOR RESEARCH USE ONLY. NOT FOR USE IN DIAGNOSTIC PROCEDURES"

Our Abpromise to you: Quality guaranteed and expert technical support

- Replacement or refund for products not performing as stated on the datasheet
- Valid for 12 months from date of delivery
- Response to your inquiry within 24 hours
- We provide support in Chinese, English, French, German, Japanese and Spanish
- Extensive multi-media technical resources to help you
- We investigate all quality concerns to ensure our products perform to the highest standards

If the product does not perform as described on this datasheet, we will offer a refund or replacement. For full details of the Abpromise, please visit <https://www.abcam.com/abpromise> or contact our technical team.

Terms and conditions

- Guarantee only valid for products bought direct from Abcam or one of our authorized distributors