

## Product datasheet

### Anti-CD32B + CD32A + CD32C antibody [EP6243] ab131051

Recombinant RabMAb

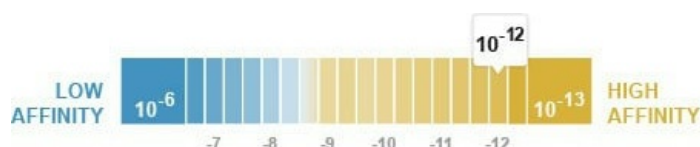
4 Images

#### Overview

Product name	Anti-CD32B + CD32A + CD32C antibody [EP6243]
Description	Rabbit monoclonal [EP6243] to CD32B + CD32A + CD32C
Host species	Rabbit
Tested applications	<b>Suitable for:</b> WB, IHC-P, ICC/IF <b>Unsuitable for:</b> Flow Cyt or IP
Species reactivity	<b>Reacts with:</b> Human
Immunogen	Synthetic peptide within Human CD32A aa 1-100 (extracellular). The exact sequence is proprietary.
Positive control	WB: Daudi and Raji cells. IHC-P: Human spleen and tonsil tissue. ICC/IF: Raji cells.
General notes	<p>This product has switched from a hybridoma to recombinant production method on 13th September 2023.</p> <p>This product is a recombinant monoclonal antibody, which offers several advantages including:</p> <ul style="list-style-type: none"><li>- High batch-to-batch consistency and reproducibility</li><li>- Improved sensitivity and specificity</li><li>- Long-term security of supply</li><li>- Animal-free production</li></ul> <p>For more information <a href="#">see here</a>.</p> <p>Our RabMAb<sup>®</sup> technology is a patented hybridoma-based technology for making rabbit monoclonal antibodies. For details on our patents, please refer to <a href="#">RabMAb<sup>®</sup> patents</a>.</p>

#### Properties

Form	Liquid
Storage instructions	Shipped at 4°C. Store at -20°C. Stable for 12 months at -20°C.
Dissociation constant (K <sub>D</sub> )	K <sub>D</sub> = 4.40 x 10 <sup>-12</sup> M



[Learn more about K<sub>D</sub>](#)

<b>Storage buffer</b>	pH: 7.20 Preservative: 0.01% Sodium azide Constituents: 59% PBS, 40% Glycerol (glycerin, glycerine), 0.05% BSA
<b>Purity</b>	Protein A purified
<b>Clonality</b>	Monoclonal
<b>Clone number</b>	EP6243
<b>Isotype</b>	IgG

## Applications

**The Abpromise guarantee** Our [Abpromise guarantee](#) covers the use of ab131051 in the following tested applications. The application notes include recommended starting dilutions; optimal dilutions/concentrations should be determined by the end user.

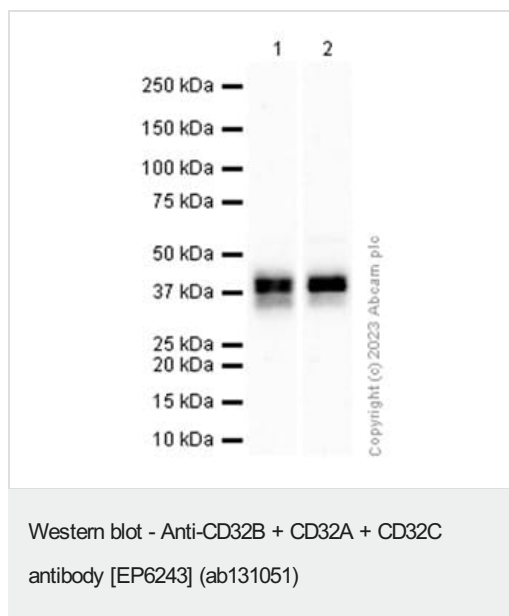
Application	Abreviews	Notes
<b>WB</b>		1/10000. Detects a band of approximately 37-43 kDa (predicted molecular weight: 34 kDa).
<b>IHC-P</b>		1/2000. Perform heat mediated antigen retrieval before commencing with IHC staining protocol.
<b>ICC/IF</b>		1/50.

**Application notes** Is unsuitable for Flow Cyt or IP.

## Target

**Cellular localization** CD32B: Cell membrane. CD32A: Cell membrane. CD32C: Cytoplasm and Cell membrane.

## Images



**All lanes :** Anti-CD32B + CD32A + CD32C antibody [EP6243] (ab131051) at 1/10000 dilution

**Lane 1 :** Daudi (Human Burkitt's lymphoma lymphoblast) whole cell lysate

**Lane 2 :** Raji (Human Burkitt's lymphoma B lymphocyte) whole cell lysate

Lysates/proteins at 20 µg per lane.

## Secondary

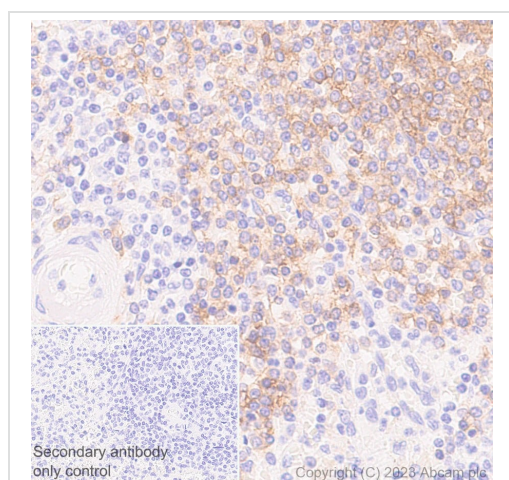
**All lanes :** Goat Anti-Rabbit IgG H&L (HRP) ([ab97051](#)) at 1/20000 dilution

Performed under reducing conditions.

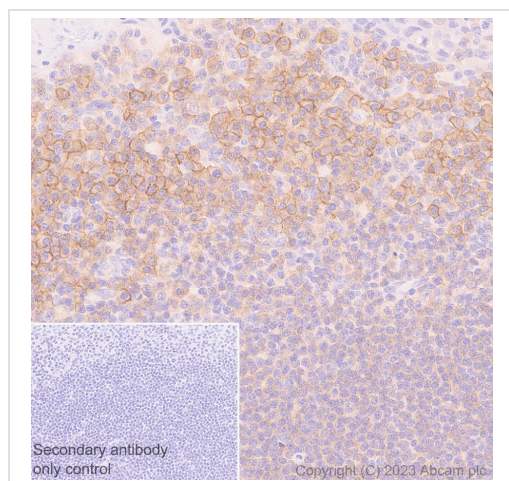
**Predicted band size:** 34 kDa

**Observed band size:** 34-37 kDa

Blocking and diluting buffer and concentration: 5% NFDM/TBST.

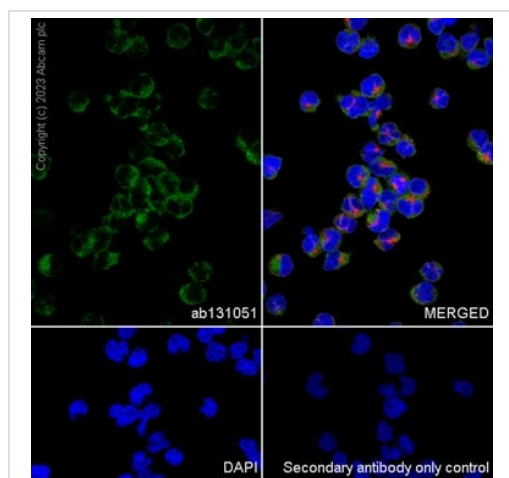


Immunohistochemical analysis of paraffin-embedded Human spleen tissue labeling CD32B + CD32A + CD32C with ab131051 at 1/2000 dilution. The immunostaining was performed on a Leica Biosystems BOND® RX instrument. Counterstained with Hematoxylin. Heat mediated antigen retrieval was performed with Citrate buffer (pH 6.0) for 20 mins.



Immunohistochemical analysis of paraffin-embedded Human tonsil tissue labeling CD32B + CD32A + CD32C with ab131051 at 1/2000 dilution. The immunostaining was performed on a Leica Biosystems BOND® RX instrument. Counterstained with Hematoxylin. Heat mediated antigen retrieval was performed with Citrate buffer (pH 6.0) for 20 mins.

Immunohistochemistry (Formalin/PFA-fixed paraffin-embedded sections) - Anti-CD32B + CD32A + CD32C antibody [EP6243] (ab131051)



Immunofluorescent analysis of 4% Paraformaldehyde-fixed, 0.1% TritonX-100 permeabilized Raji cells labelling CD32B + CD32A + CD32C with ab131051 at 1/50 dilution, followed by Goat Anti-Rabbit IgG H&L (Alexa Fluor® 488) preadsorbed (**ab150081**) at 1/1000 dilution at RT for 45 min. Alexa Fluor® 594 Anti-alpha Tubulin antibody [DM1A] - Microtubule Marker (**ab195889**) at 1/200 dilution, was co-incubated with ab131051 overnight at 4° C. Nucleus were visualized using DAPI.

Immunocytochemistry/ Immunofluorescence - Anti-CD32B + CD32A + CD32C antibody [EP6243] (ab131051)

**Please note:** All products are "FOR RESEARCH USE ONLY. NOT FOR USE IN DIAGNOSTIC PROCEDURES"

#### Our Abpromise to you: Quality guaranteed and expert technical support

- Replacement or refund for products not performing as stated on the datasheet
- Valid for 12 months from date of delivery

- Response to your inquiry within 24 hours
- We provide support in Chinese, English, French, German, Japanese and Spanish
- Extensive multi-media technical resources to help you
- We investigate all quality concerns to ensure our products perform to the highest standards

If the product does not perform as described on this datasheet, we will offer a refund or replacement. For full details of the Abpromise, please visit <https://www.abcam.com/abpromise> or contact our technical team.

#### **Terms and conditions**

---

- Guarantee only valid for products bought direct from Abcam or one of our authorized distributors