




Product datasheet

Anti-CD40 antibody ab13545

★★★★★ [7 Abreviews](#) [23 References](#) [4 Images](#)

Overview

Product name	Anti-CD40 antibody
Description	Rabbit polyclonal to CD40
Host species	Rabbit
Specificity	The antibody specificity is confirmed by specific peptide inhibition in immunoblotting studies.
Tested applications	Suitable for: IHC-P, WB
Species reactivity	Reacts with: Mouse, Rat, Sheep, Rabbit, Guinea pig, Hamster, Cow, Human, Pig, Monkey Predicted to work with: Chicken, Dog 
Immunogen	Synthetic peptide: CQPVTQEDGKESRISVQERQ conjugated to KLH, corresponding to amino acids 258-277 of Human CD40.  Run BLAST with  Run BLAST with
General notes	Storage below -20°C is not recommended. For maximum product recovery centrifuge the product vial before removing cap. Shipped on gel packs. The Life Science industry has been in the grips of a reproducibility crisis for a number of years. Abcam is leading the way in addressing this with our range of recombinant monoclonal antibodies and knockout edited cell lines for gold-standard validation. Please check that this product meets your needs before purchasing. If you have any questions, special requirements or concerns, please send us an inquiry and/or contact our Support team ahead of purchase. Recommended alternatives for this product can be found below, along with publications, customer reviews and Q&As

Properties

Form	Liquid
Storage instructions	Shipped at 4°C. Upon delivery aliquot and store at -20°C. Avoid freeze / thaw cycles.
Storage buffer	Preservative: 0.09% Sodium azide Constituents: PBS, 50% Glycerol (glycerin, glycerine)
Purity	Affinity purified
Purification notes	Peptide affinity purified.
Clonality	Polyclonal

Isotype

IgG

Applications

The Abpromise guarantee

Our **Abpromise guarantee** covers the use of ab13545 in the following tested applications.

The application notes include recommended starting dilutions; optimal dilutions/concentrations should be determined by the end user.

Application	Abreviews	Notes
IHC-P	★★★★★ (5)	Use at an assay dependent concentration.
WB	★★★★★ (2)	1/1000. Detects a band of approximately 40 kDa (predicted molecular weight: 34 kDa).

Target

Function

Receptor for TNFSF5/CD40LG.

Tissue specificity

B-cells and in primary carcinomas.

Involvement in disease

Defects in CD40 are the cause of hyper-IgM immunodeficiency syndrome type 3 (HIGM3) [MIM:606843]; also known as hyper-IgM syndrome 3. HIGM3 is an autosomal recessive disorder which includes an inability of B cells to undergo isotype switching, one of the final differentiation steps in the humoral immune system, an inability to mount an antibody-specific immune response, and a lack of germinal center formation.

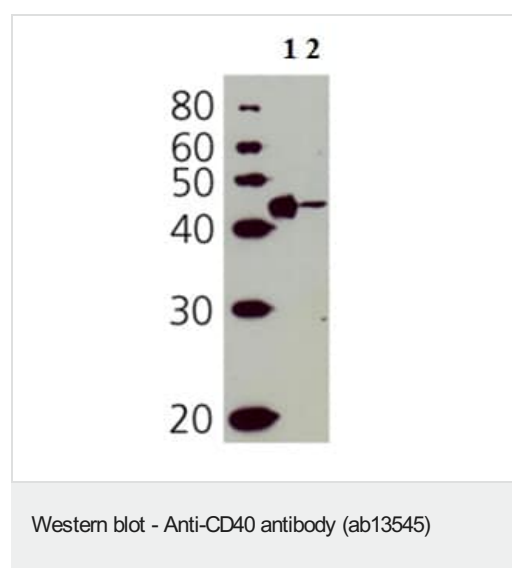
Sequence similarities

Contains 4 TNFR-Cys repeats.

Cellular localization

Secreted and Cell membrane.

Images

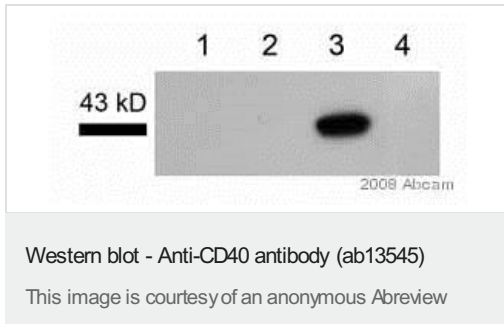


All lanes : Anti-CD40 antibody (ab13545) at 1/200 dilution

Lane 1 : ESK4 cell lysate

Lane 2 : Molt 4 cell lysate

Predicted band size: 34 kDa



All lanes : Anti-CD40 antibody (ab13545) at 1/5000 dilution

Lane 1 : Human B chronic lymphocytic leukaemia cells, nuclear fraction

Lane 2 : Human B chronic lymphocytic leukaemia cells, cytoskeletal fraction

Lane 3 : Human B chronic lymphocytic leukaemia cells, membrane fraction

Lane 4 : Human B chronic lymphocytic leukaemia cells, cytosolic fraction

Lysates/proteins at 18 µg per lane.

Secondary

All lanes : HRP conjugated goat anti-rabbit

Developed using the ECL technique.

Performed under reducing conditions.

Predicted band size: 34 kDa

Observed band size: 42 kDa

Exposure time: 3 minutes

The primary antibody was incubated with the membrane for 16 hours at 4°C.



Western blot - Anti-CD40 antibody (ab13545)

Anti-CD40 antibody (ab13545) at 1/1000 dilution + Recombinant human CD40 protein (Fc Chimera Active) ([ab83917](#)) at 1 µg

Secondary

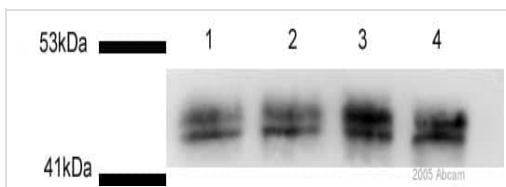
Goat Anti-Rabbit IgG H&L (HRP) preadsorbed ([ab97080](#)) at 1/5000 dilution

Developed using the ECL technique.

Performed under reducing conditions.

Predicted band size: 34 kDa

Exposure time: 8 minutes



Western blot - Anti-CD40 antibody (ab13545)

All lanes : Anti-CD40 antibody (ab13545) at 1/1000 dilution

Lanes 1-2 : Control human HCAEC cells - whole cell lysate

Lanes 3-4 : Treated human HCAEC cells - whole cell lysate

Secondary

All lanes : HRP conjugated Goat Anti-Rabbit IgG

Developed using the ECL technique.

Performed under reducing conditions.

Predicted band size: 34 kDa

Observed band size: 45 kDa

Exposure time: 20 seconds

This image is courtesy of an Abreview submitted on **10 August 2005**.

Please note: All products are "FOR RESEARCH USE ONLY. NOT FOR USE IN DIAGNOSTIC PROCEDURES"

Our Promise to you: Quality guaranteed and expert technical support

- Replacement or refund for products not performing as stated on the datasheet
- Valid for 12 months from date of delivery

- Response to your inquiry within 24 hours
- We provide support in Chinese, English, French, German, Japanese and Spanish
- Extensive multi-media technical resources to help you
- We investigate all quality concerns to ensure our products perform to the highest standards

If the product does not perform as described on this datasheet, we will offer a refund or replacement. For full details of the Abpromise, please visit <https://www.abcam.com/abpromise> or contact our technical team.

Terms and conditions

- Guarantee only valid for products bought direct from Abcam or one of our authorized distributors