


## Product datasheet

### Anti-CD40 antibody ab58391

★★★★★ [3 Abreviews](#) [5 References](#) [2 Images](#)

#### Overview

Product name	Anti-CD40 antibody
Description	Rabbit polyclonal to CD40
Host species	Rabbit
Tested applications	<b>Suitable for:</b> WB, IHC-P
Species reactivity	<b>Reacts with:</b> Human, African green monkey <b>Predicted to work with:</b> Mouse 
Immunogen	Synthetic peptide derived from the C-terminal of CD40 (Human)
General notes	<p>The Life Science industry has been in the grips of a reproducibility crisis for a number of years. Abcam is leading the way in addressing this with our range of recombinant monoclonal antibodies and knockout edited cell lines for gold-standard validation. Please check that this product meets your needs before purchasing.</p> <p>If you have any questions, special requirements or concerns, please send us an inquiry and/or contact our Support team ahead of purchase. Recommended alternatives for this product can be found below, along with publications, customer reviews and Q&amp;As</p>

#### Properties

Form	Liquid
Storage instructions	Shipped at 4°C. Store at -20°C. Stable for 12 months at -20°C.
Storage buffer	<p>pH: 7.40</p> <p>Preservative: 0.02% Sodium azide</p> <p>Constituents: PBS, 50% Glycerol, 0.87% Sodium chloride</p> <p>Without Mg+2 and Ca+2</p>
Purity	Immunogen affinity purified
Purification notes	Purified from rabbit antiserum.
Clonality	Polyclonal
Isotype	IgG

#### Applications

## The Abpromise guarantee

Our **Abpromise guarantee** covers the use of ab58391 in the following tested applications.

The application notes include recommended starting dilutions; optimal dilutions/concentrations should be determined by the end user.

Application	Abreviews	Notes
WB	★★★★★ (1)	1/500 - 1/1000. Detects a band of approximately 31 kDa (predicted molecular weight: 31 kDa).
IHC-P		Use at an assay dependent concentration.

## Target

### Function

Receptor for TNFSF5/CD40LG.

### Tissue specificity

B-cells and in primary carcinomas.

### Involvement in disease

Defects in CD40 are the cause of hyper-IgM immunodeficiency syndrome type 3 (HIGM3) [MIM:606843]; also known as hyper-IgM syndrome 3. HIGM3 is an autosomal recessive disorder which includes an inability of B cells to undergo isotype switching, one of the final differentiation steps in the humoral immune system, an inability to mount an antibody-specific immune response, and a lack of germinal center formation.

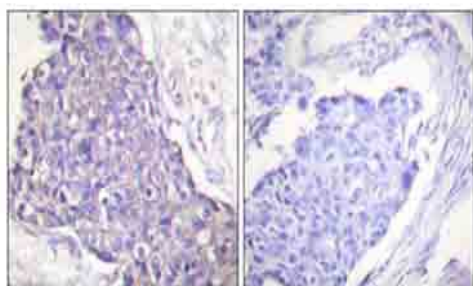
### Sequence similarities

Contains 4 TNFR-Cys repeats.

### Cellular localization

Secreted and Cell membrane.

## Images



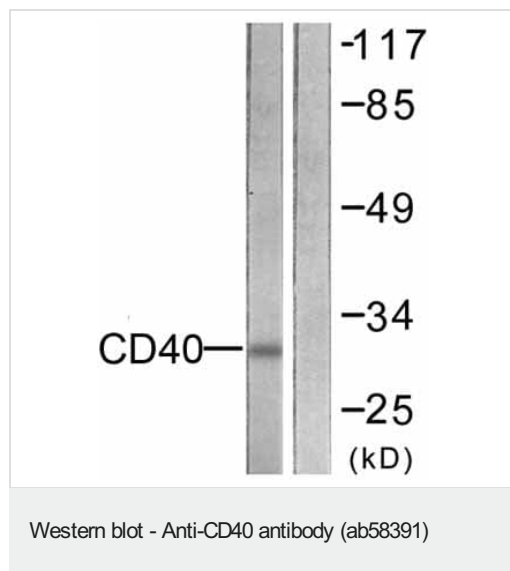
Peptide

-

+

Immunohistochemistry (Formalin/PFA-fixed paraffin-embedded sections) - Anti-CD40 antibody (ab58391)

ab58391, at 1/50 dilution, staining human CD40 in breast carcinoma tissue, by immunohistochemistry, in the presence or absence of the immunizing peptide. Paraffin embedded tissue.



**All lanes :** Anti-CD40 antibody (ab58391) at 1/500 dilution

**Lane 1 :** COS7 cell extract with no immunizing peptide

**Lane 2 :** COS7 cell extract with immunizing peptide

**Predicted band size:** 31 kDa

**Observed band size:** 31 kDa

**Please note:** All products are "FOR RESEARCH USE ONLY. NOT FOR USE IN DIAGNOSTIC PROCEDURES"

### Our Abpromise to you: Quality guaranteed and expert technical support

---

- Replacement or refund for products not performing as stated on the datasheet
- Valid for 12 months from date of delivery
- Response to your inquiry within 24 hours
- We provide support in Chinese, English, French, German, Japanese and Spanish
- Extensive multi-media technical resources to help you
- We investigate all quality concerns to ensure our products perform to the highest standards

If the product does not perform as described on this datasheet, we will offer a refund or replacement. For full details of the Abpromise, please visit <https://www.abcam.com/abpromise> or contact our technical team.

### Terms and conditions

---

- Guarantee only valid for products bought direct from Abcam or one of our authorized distributors