


Product datasheet

Anti-CD62E antibody ab18981

★★★★★ [2 Abreviews](#) [38 References](#) [3 Images](#)

Overview

Product name	Anti-CD62E antibody
Description	Rabbit polyclonal to CD62E
Host species	Rabbit
Tested applications	Suitable for: IHC-P, WB, Flow Cyt
Species reactivity	Reacts with: Human Predicted to work with: Rat 
Immunogen	Synthetic peptide corresponding to Human CD62E. Surrounding aa 584. Database link: P16581 (Peptide available as ab113900)
Positive control	WB: Jurkat cell lysate. Flow Cyt: Jurkat cells. IHC-P: Human placenta
General notes	<p>This product is manufactured by BioVision, an Abcam company and was previously called 3631 E-Selectin Antibody.</p> <p>The Life Science industry has been in the grips of a reproducibility crisis for a number of years. Abcam is leading the way in addressing this with our range of recombinant monoclonal antibodies and knockout edited cell lines for gold-standard validation. Please check that this product meets your needs before purchasing.</p> <p>If you have any questions, special requirements or concerns, please send us an inquiry and/or contact our Support team ahead of purchase. Recommended alternatives for this product can be found below, along with publications, customer reviews and Q&As</p>

Properties

Form	Liquid
Storage instructions	Shipped at 4°C. Upon delivery aliquot and store at -20°C or -80°C. Avoid repeated freeze / thaw cycles.
Storage buffer	Preservative: 0.03% Proclin 300 Constituents: PBS, 30% Glycerol (glycerin, glycerine), 0.5% BSA, 0.15% EDTA
Purity	Affinity purified
Clonality	Polyclonal
Isotype	IgG

Applications

The Abpromise guarantee

Our [Abpromise guarantee](#) covers the use of ab18981 in the following tested applications.

The application notes include recommended starting dilutions; optimal dilutions/concentrations should be determined by the end user.

Application	Abreviews	Notes
IHC-P		Use a concentration of 5 µg/ml. Perform heat mediated antigen retrieval with citrate buffer pH 6 before commencing with IHC staining protocol.
WB		Use a concentration of 0.5 - 4 µg/ml. Predicted molecular weight: 67 kDa.
Flow Cyt		Use at an assay dependent concentration.

Target

Function

Cell-surface glycoprotein having a role in immunoadhesion. Mediates in the adhesion of blood neutrophils in cytokine-activated endothelium through interaction with PSGL1/SELPLG. May have a role in capillary morphogenesis.

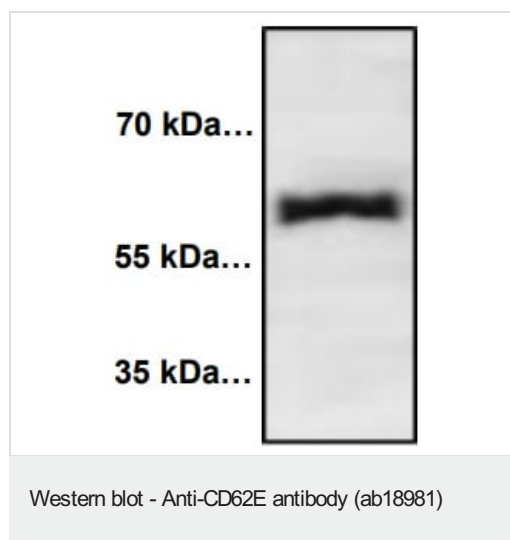
Sequence similarities

Belongs to the selectin/LECAM family.
Contains 1 C-type lectin domain.
Contains 1 EGF-like domain.
Contains 6 Sushi (CCP/SCR) domains.

Cellular localization

Membrane.

Images



Anti-CD62E antibody (ab18981) at 1/1000 dilution + Jurkat cell lysate at 80 µg

Secondary

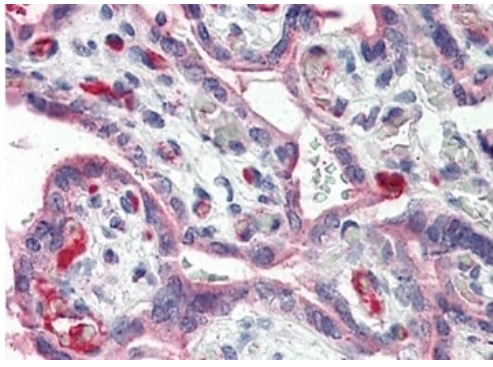
Peroxidase conjugated goat anti-rabbit IgG at 1/10000 dilution

Predicted band size: 67 kDa

Observed band size: 67 kDa

Blocking/Dilution buffer: 5% NFDM (1 hr at RT) / TBST.

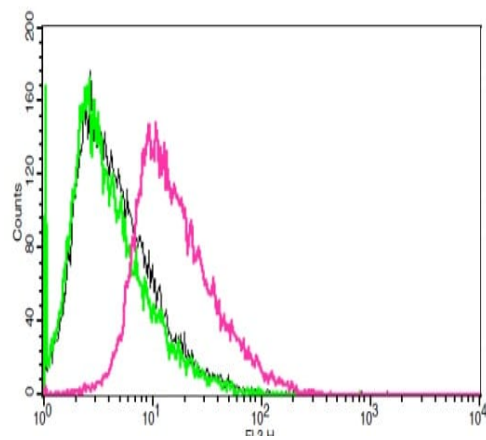
Incubated with the primary antibody overnight at 4°C. Incubated with the secondary antibody for 1 hour at room temperature.



Immunohistochemistry (Formalin/PFA-fixed paraffin-embedded sections) - Anti-CD62E antibody (ab18981)

ab18981 IHC staining of human placenta with E-Selectin

Polyclonal antibody: Immunohistochemistry of formalin fixed, paraffin-embedded tissue after heat-induced antigen retrieval. 5 µg/ml of antibody used for staining. After incubation with the primary antibody, slides were incubated with biotinylated secondary antibody, followed by alkaline phosphatase-streptavidin and chromogen.



Flow Cytometry - Anti-CD62E antibody (ab18981)

Flow cytometric analysis of Jurkat cells using ab18981 (red) with negative controls (black and green).

Please note: All products are "FOR RESEARCH USE ONLY. NOT FOR USE IN DIAGNOSTIC PROCEDURES"

Our Abpromise to you: Quality guaranteed and expert technical support

- Replacement or refund for products not performing as stated on the datasheet
- Valid for 12 months from date of delivery
- Response to your inquiry within 24 hours
- We provide support in Chinese, English, French, German, Japanese and Spanish
- Extensive multi-media technical resources to help you
- We investigate all quality concerns to ensure our products perform to the highest standards

If the product does not perform as described on this datasheet, we will offer a refund or replacement. For full details of the Abpromise, please visit <https://www.abcam.com/abpromise> or contact our technical team.

Terms and conditions

- Guarantee only valid for products bought direct from Abcam or one of our authorized distributors